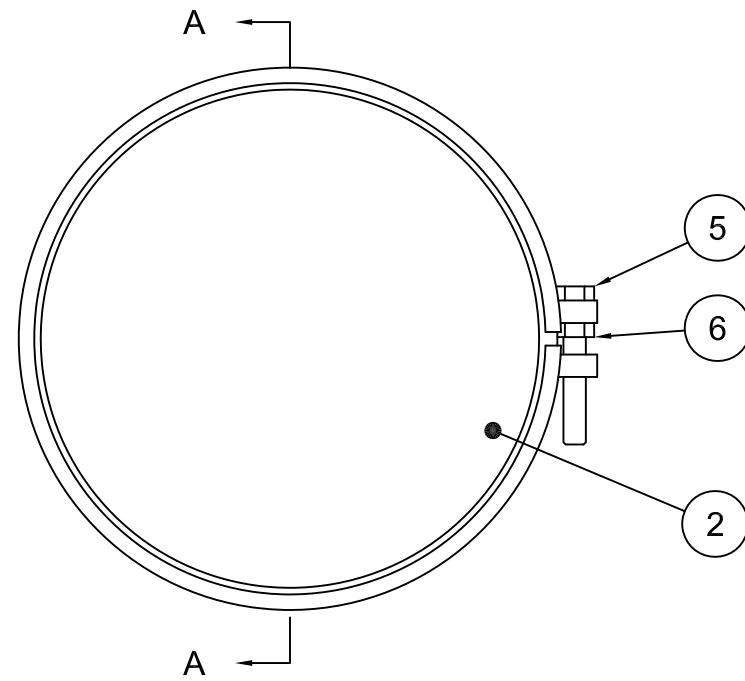
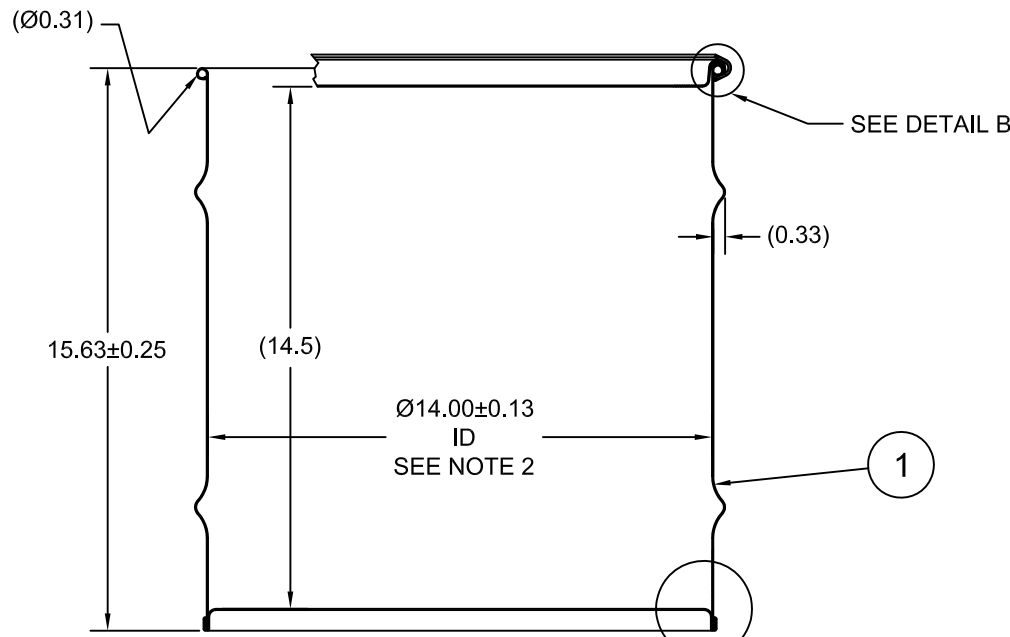


Z08000

ECN # or INIT	REV	DESCRIPTION	DATE
OE-005	A1	REDRAWN TO AutoCAD	05-DEC-2012
OE-001	A2	ADD'D UN UMBRELLA STATEMENT	14-DEC-2012
LJT	A3	REMOVED 'X's ON COVER	04-APR-2013
OE-013	A4	ADJUSTED HOOP PROFILE	19-APR-2013
OE-001	A5	CLERICAL ERROR	22-APR-2013



SECTION A-A



NOTES:

1. THESE DIMENSIONS REPRESENT DRUM AFTER BEING PROPERLY ASSEMBLED AND CLOSED PER SKOLNIK CLOSING INSTRUCTIONS.
2. TO DETERMINE GREATER ACCURACY OF ANY DIAMETRIC DIMENSION, MEASURING OF CIRCUMFERENCE IS REQUIRED
3. CONSTRUCTION per 49 CFR §178.504 (b)

MATERIAL:

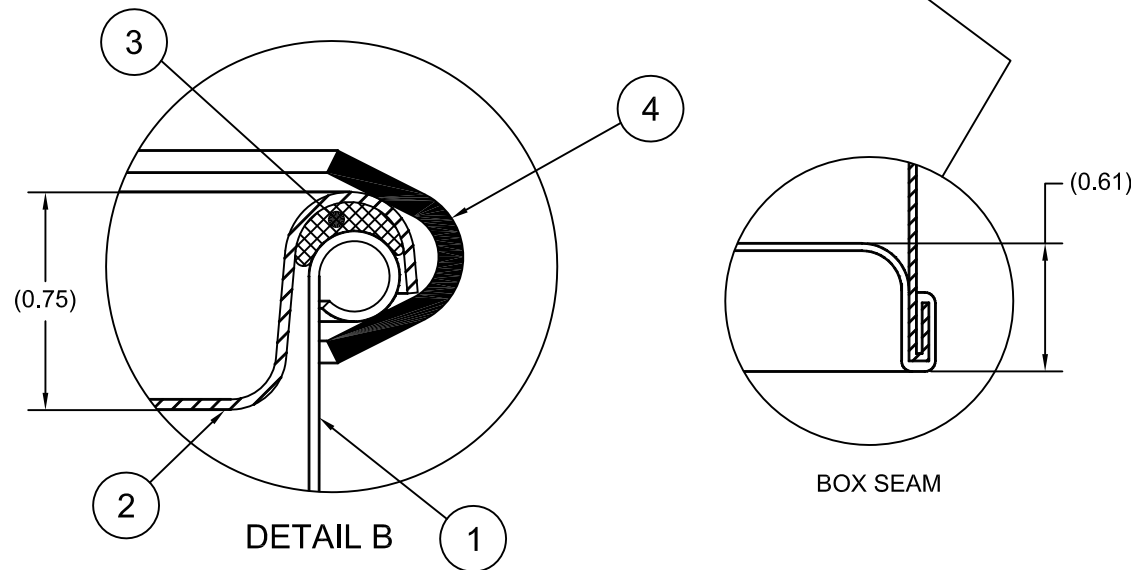
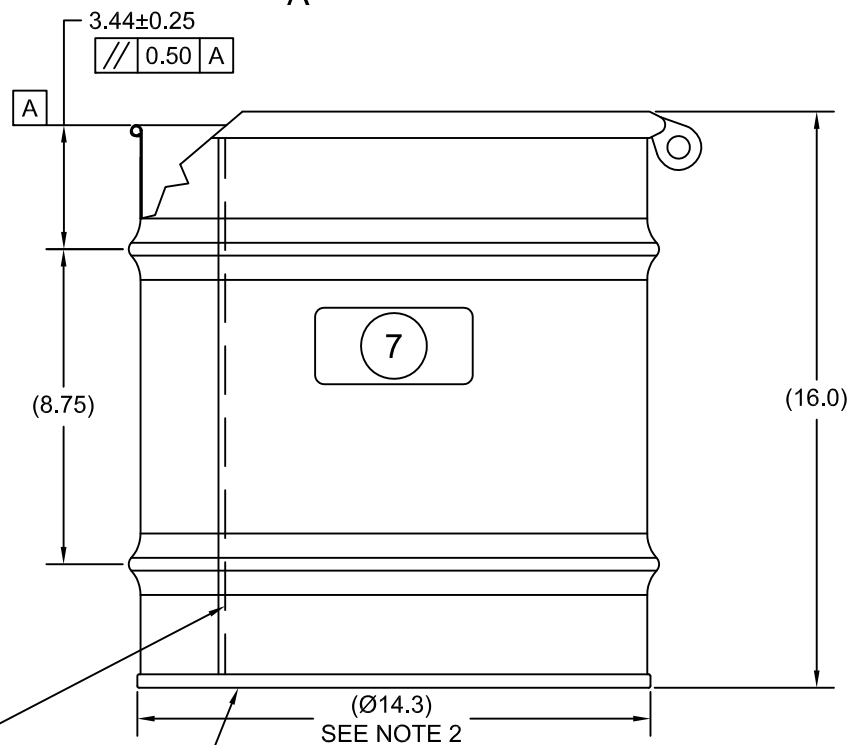
1. DRUM BODY AND COVER CRCQ CARBON STEEL PER ASTM A1008 AND ASTM A568 OR EQUIVALENT
2. MATERIAL THICKNESS: DRUM 0.9mm (0.0319 - 0.0370, 20 GAUGE)
3. GASKET MAT'L PER ASTM D1056

FINISH:

1. COVER EXTERIOR PAINTED WHITE (LQ10020)
- BODY/BOTTOM EXTERIOR PAINTED BLACK (LQ10003)

REFERENCE:

1. UN RATING 'UMBRELLA', 49 CFR §178.601 (g)(3) for CQ1002



ITEM	P/N	DESCRIPTION	QTY
7		UN DURABLE LABEL	1
6	NT5800	5/8-11UNC HEX JAM NUT	1
5	BT5840	5/8-11UNC X 4in LONG HEX HEAD BOLT	1
4	RBH1413	BOLT RING (MOD A) 5-16G 13GA 5/8 LUG	1
3	GE0503-01	GASKET, EPDM, Ø3/8	1
2	P1409	COVER, Ø14.00 DRUM, CRCQ STEEL	1
1		BODY/BOTTOM 8 GALLON DRUM 14 ID	1

OVERLAP WELD

UN NUMBER EMBOSSED ON BOTTOM OF DRUM
 ½" CHARACTERS :
 UN/1A2/X96/S/YR
 UN/1A2/Y1.8/150/YR
 0.9 *

TARE WEIGHT:
 14 lbs

THE USE OF INFORMATION CONTAINED HEREIN IS RESTRICTED FOR THE BENEFIT OF SKOLNIK INDUSTRIES ONLY. UNAUTHORIZED USE OR DISCLOSURE, COPYING OR OTHERWISE REPRODUCING (IN ANY MANNER) ANY PORTION OF THIS DRAWING WITHOUT PRIOR WRITTEN PERMISSION OF AN AUTHORIZED OFFICIAL OF SKOLNIK INDUSTRIES IS STRICTLY PROHIBITED.

MFG BR	DRW LJT	CHK JG
SLS DR	QA MD	
APR G. Petersen		
FILE CREATED IN AutoCAD 2002	3 RD	

UNLESS STATED OTHERWISE
 (DIMENSIONS IN PARENTHESIS ARE FOR REFERENCE ONLY!!!)
 ALL DIMENSIONS ARE IN INCHES
 DO NOT SCALE DRAWING
 TOLERANCES:
 FRACTIONS ±1/4
 X° ± 3°
 X.X ± 0.2
 X.XX ± 0.10
 X.XXX ± 0.030

SKOLNIK INDUSTRIES, INC.
 4900 SOUTH KILBOURN AVENUE, CHICAGO, IL 60632

DESCRIPTION
 8 GALLON OPEN HEAD DRUM
 0.9 - 0.9 - 0.9 CRCQ STEEL
 1A2/X96/S & 1A2/Y1.8/150

REL. DATE	PART NUM. / FILENAME	REV
-	CQ0802	A5