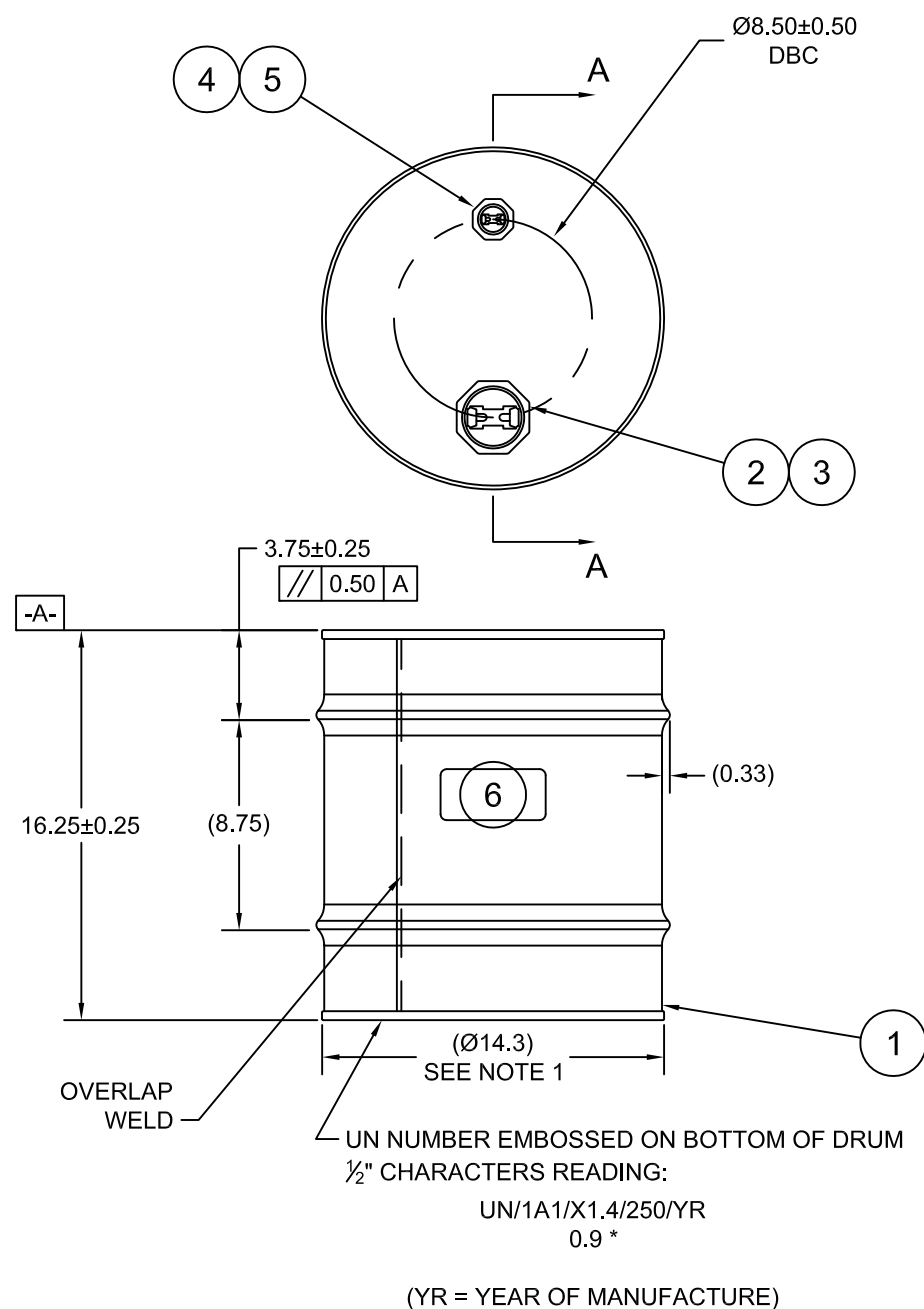
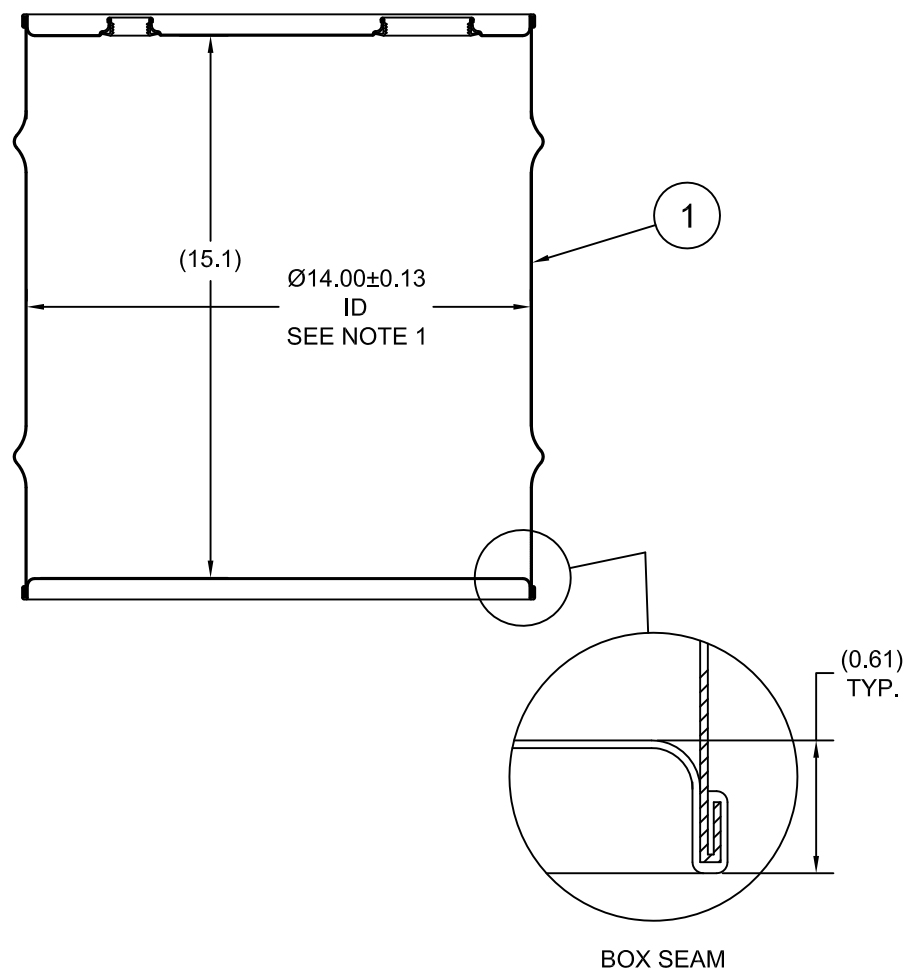


08000

ECN # or INIT	REV	DESCRIPTION	DATE
OE-005	A1	REDRAWN TO AutoCAD	05-DEC-2012
		ADD'D CHIME VIEW &	
OE-013	A2	CORRECTED HOOP PROFILE	19-APR-2013



SECTION A-A  
SHOWN W/ PLUGS REMOVED



NOTES:

- TO DETERMINE GREATER ACCURACY OF ANY DIAMETRIC DIMENSION, MEASURING OF CIRCUMFERENCE IS REQUIRED
- CONSTRUCTION per 49 CFR §178.504 (b)

MATERIAL:

- DRUM BODY AND COVER CRCQ CARBON STEEL PER ASTM A1008 AND ASTM A568 OR EQUIVALENT
- MATERIAL THICKNESS 0.9mm (0.0319 - 0.0370, 20 GAUGE)

FINISH:

- TOP EXTERIOR PAINTED WHITE (LQ10020)
- BODY/BOTTOM EXTERIOR PAINTED BLACK (LQ10003)

REFERENCE:

- UN RATING 'UMBRELLA', 49 CFR §178.601 (g)(3) for CQ1003

6		UN DURABLE LABEL	1
5	PT3010	PLUG 3/4 TS EP/PH BUNA GASKET	1
4	FT3010	FLANGE 3/4 TS EP/PH BUNA GASKET	1
3	PT2010	PLUG 2 TS EP/PH BUNA GASKET	1
2	FT2010	FLANGE 2 TS EP/PH BUNA GASKET	1
1		8 GALLON TIGHT HEAD DRUM	1
ITEM	P/N	DESCRIPTION	QTY

MFG BR	DRW LJT	CHK JG
	SLS DR	QA MD

UNLESS STATED OTHERWISE

(DIMENSIONS IN PARENTHESIS ARE FOR REFERENCE ONLY!!!)

ALL DIMENSIONS ARE IN INCHES  
DO NOT SCALE DRAWING

TOLERANCES:  
FRACTIONS ±1/4  
X° ± 3°  
X.X ± 0.2  
X.XX ± 0.10  
X.XXX ± 0.030

**SKOLNIK** INDUSTRIES, INC.  
4900 SOUTH KILBOURN AVENUE, CHICAGO, IL 60632

DESCRIPTION  
8 GALLON TIGHT HEAD DRUM  
0.9 - 0.9 - 0.9 CRCQ  
1A1/X1.4/250

REL. DATE	PART NUM. / FILENAME	REV
-	CQ0803	A2

TARE WEIGHT:  
13 lbs

THE USE OF INFORMATION CONTAINED HEREIN IS RESTRICTED FOR THE BENEFIT OF SKOLNIK INDUSTRIES ONLY. UNAUTHORIZED USE OR DISCLOSURE, COPYING OR OTHERWISE REPRODUCING (IN ANY MANNER) ANY PORTION OF THIS DRAWING WITHOUT PRIOR WRITTEN PERMISSION OF AN AUTHORIZED OFFICIAL OF SKOLNIK INDUSTRIES IS STRICTLY PROHIBITED.

APR  
G. Petersen  
FILE CREATED IN  
AutoCAD 2002

