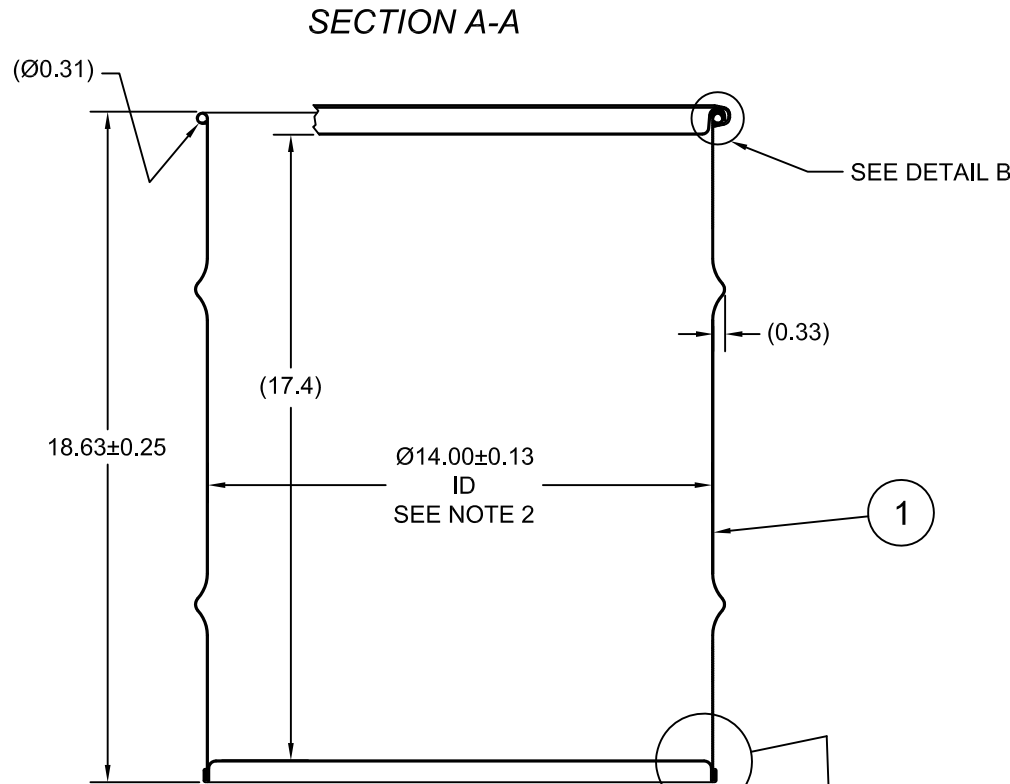
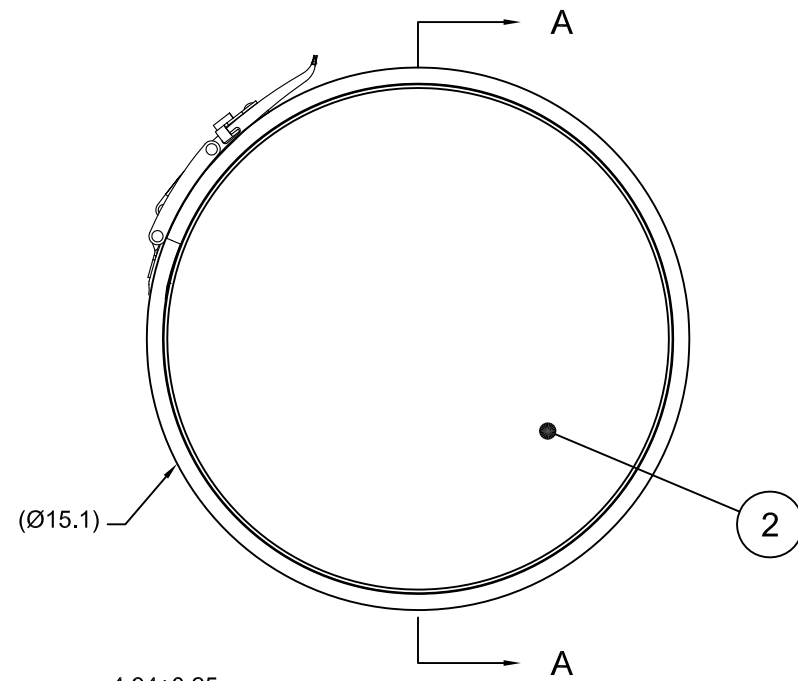


0200100

ECN # or INIT	REV	DESCRIPTION	DATE
OE-005	A1	REDRAWN TO AutoCAD	05-DEC-2012
OE-001	A2	CLERICAL ERROR	12-APR-2013
		CORRECTED RING PROFILE &	
OE-013	A3	REVISED HOOP PROFILE	19-APR-2013
17-001	A4	REMOVED LIQUID RATING	03-APR-2017
17-003	B	COVER WAS 18GA	14-SEP-2017



NOTES:

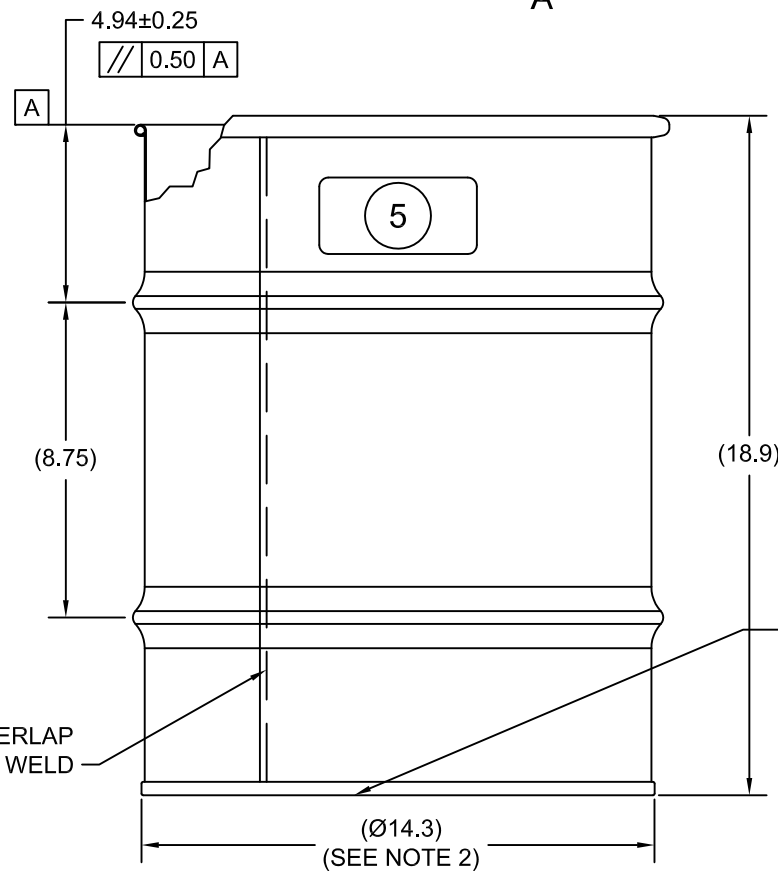
1. THESE DIMENSIONS REPRESENT DRUM AFTER BEING PROPERLY ASSEMBLED AND CLOSED PER SKOLNIK CLOSING INSTRUCTIONS.
2. TO DETERMINE GREATER ACCURACY OF ANY DIAMETRIC DIMENSION, MEASURING OF CIRCUMFERENCE IS REQUIRED
3. CONSTRUCTION per 49 CFR § 178.504 (b)

MATERIAL:

1. DRUM BODY AND COVER CRCQ CARBON STEEL PER ASTM A1008 AND ASTM A568
2. MATERIAL THICKNESS: 0.9mm (0.0319 - 0.0370, 20 GAUGE)
3. GASKET MAT'L PER ASTM D1056

FINISH:

1. DRUM BODY EXTERIOR PAINTED BLACK (LQ10003)
COVER EXTERIOR PAINTED WHITE (LQ10020)



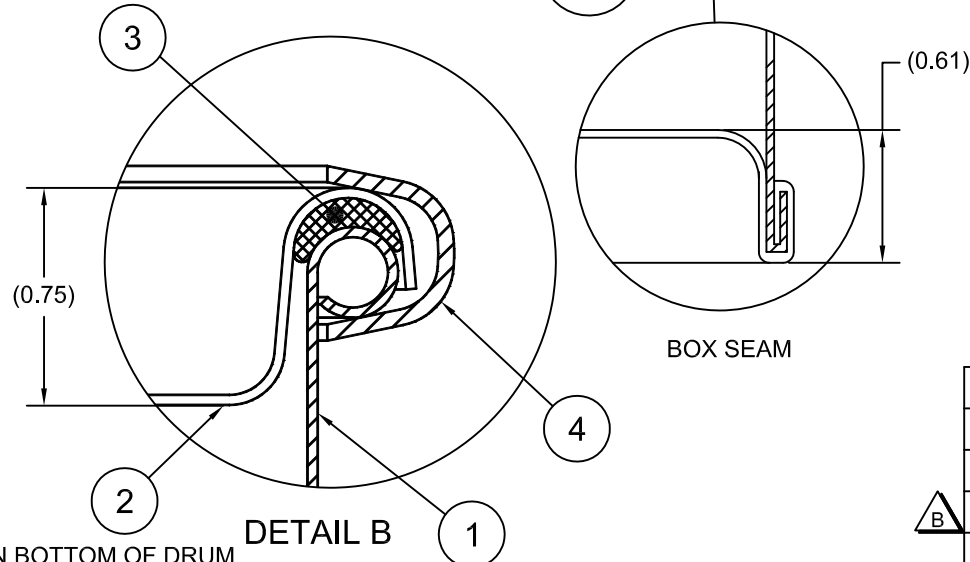
UN NUMBER EMBOSSED ON BOTTOM OF DRUM
1/2" CHARACTERS :

UN1A2/X120/S/YR

0.9 *

(YR = YEAR OF MANUFACTURE)

TARE WEIGHT:
15 lbs



5		UN DURABLE LABEL	1
4	RQ0516	14 DIA QUICK LEVERLOCK RING	1
3	GE0503-01	GASKET, EPDM, Ø3/8	1
2	P1409	COVER, Ø14.00 DRUM, CRCQ STEEL	1
1		BODY/BOTTOM 10 GALLON DRUM 14 ID	1
ITEM	P/N	DESCRIPTION	QTY

UNLESS STATED OTHERWISE

(DIMENSIONS IN PARENTHESIS ARE FOR REFERENCE ONLY!!!)

ALL DIMENSIONS ARE IN INCHES
DO NOT SCALE DRAWING

TOLERANCES:

FRACTIONS ±1/4
X° ± 3°
X.X ± 0.2
X.XX ± 0.10
X.XXX ± 0.030

**APPROVAL
ON FILE**

FILE CREATED IN
AutoCAD

3RD

SKOLNIK INDUSTRIES, INC.
4900 SOUTH KILBOURN AVENUE, CHICAGO, IL 60632

DESCRIPTION
10 GALLON OPEN HEAD DRUM
0.9 - 0.9 - 0.9 CRCQ STEEL
1A2/X120/S

REL. DATE

-

PART NUM. / FILENAME

CQ1002Q

REV

B

THE USE OF INFORMATION CONTAINED HEREIN IS RESTRICTED FOR THE BENEFIT OF SKOLNIK INDUSTRIES ONLY. UNAUTHORIZED USE OR DISCLOSURE, COPYING OR OTHERWISE REPRODUCING (IN ANY MANNER) ANY PORTION OF THIS DRAWING WITHOUT PRIOR WRITTEN PERMISSION OF AN AUTHORIZED OFFICIAL OF SKOLNIK INDUSTRIES IS STRICTLY PROHIBITED.