

200100

ECN # or INIT	REV	DESCRIPTION	DATE
	A	RELEASE	06-FEB-2008
LJT	A1	CORRECTED CLERICAL ERRORS	28-AUG-2008
LJT	B	WAS GE0503	22-JUL-2010
OE-001	B1	CLERICAL ERROR	01-APR-2013
OE-013	B2	CORRECTED HOOP GEOMETRY	16-APR-2013
OE-001	B3	CLERICAL ERROR	19-APR-2013

NOTES:

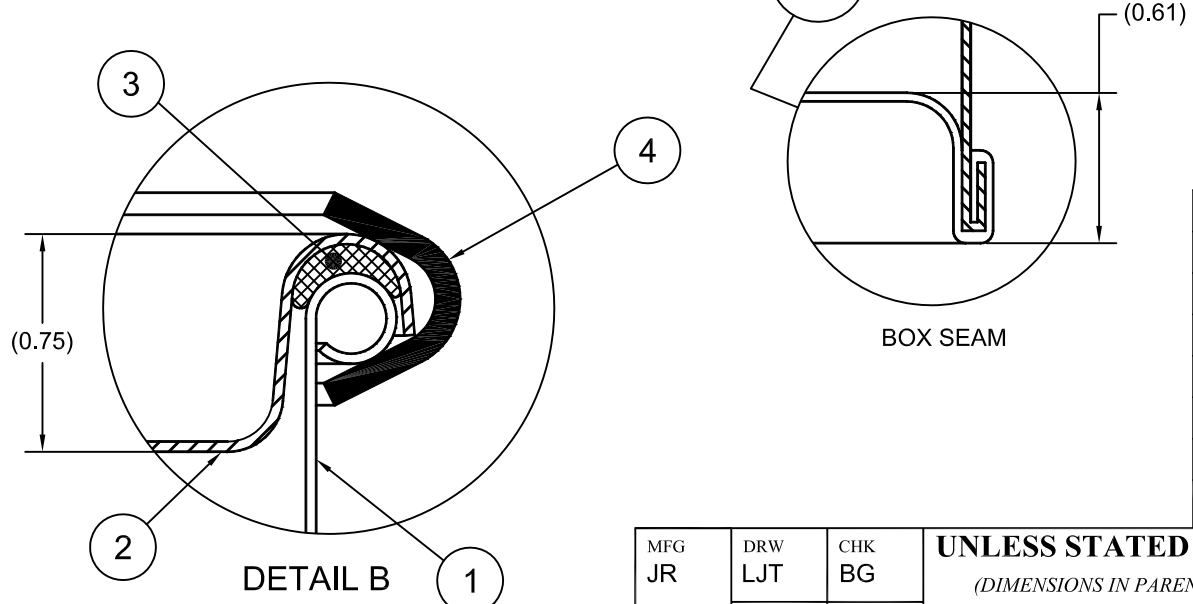
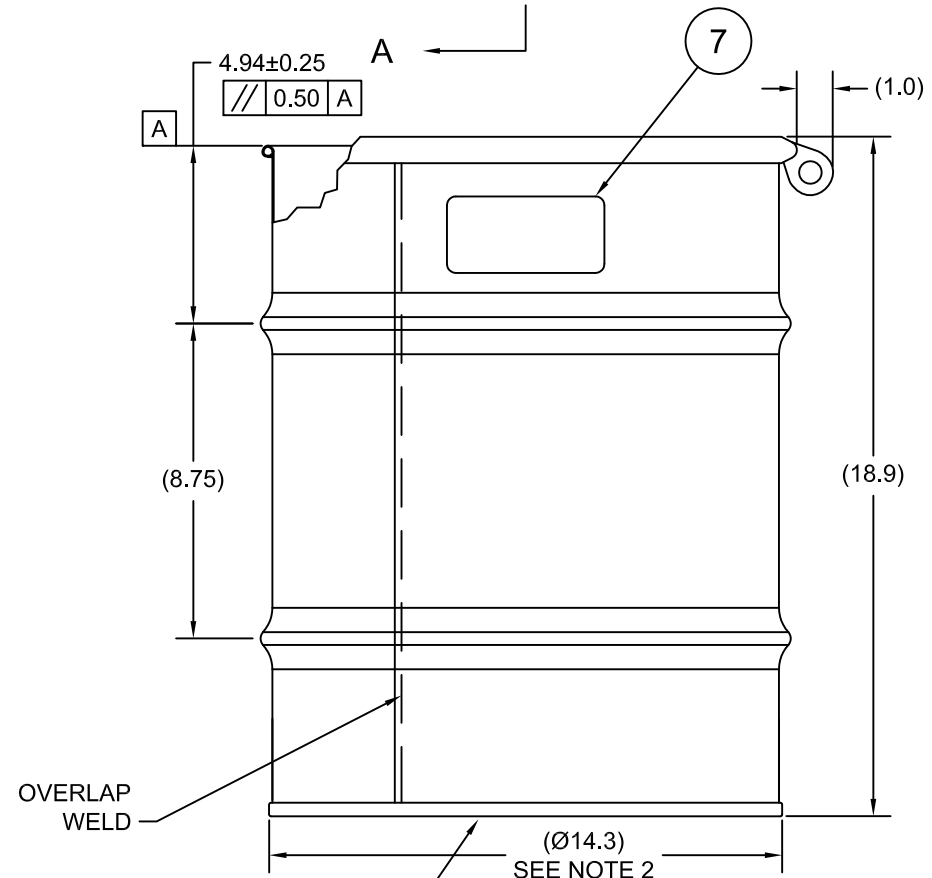
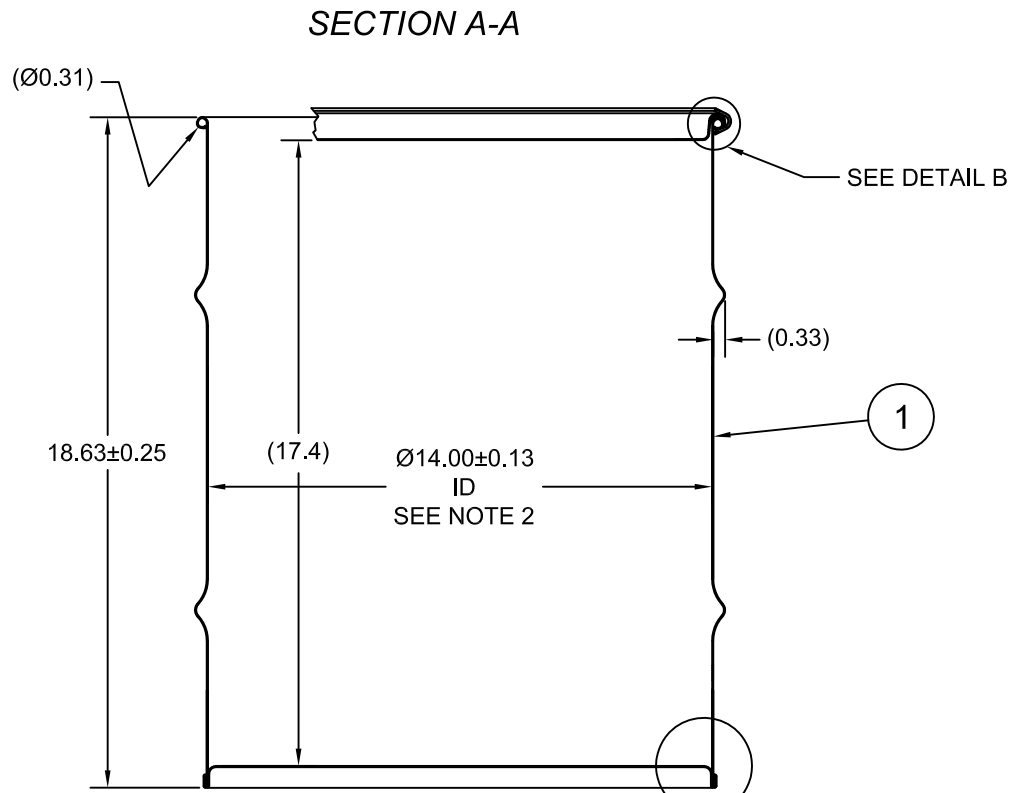
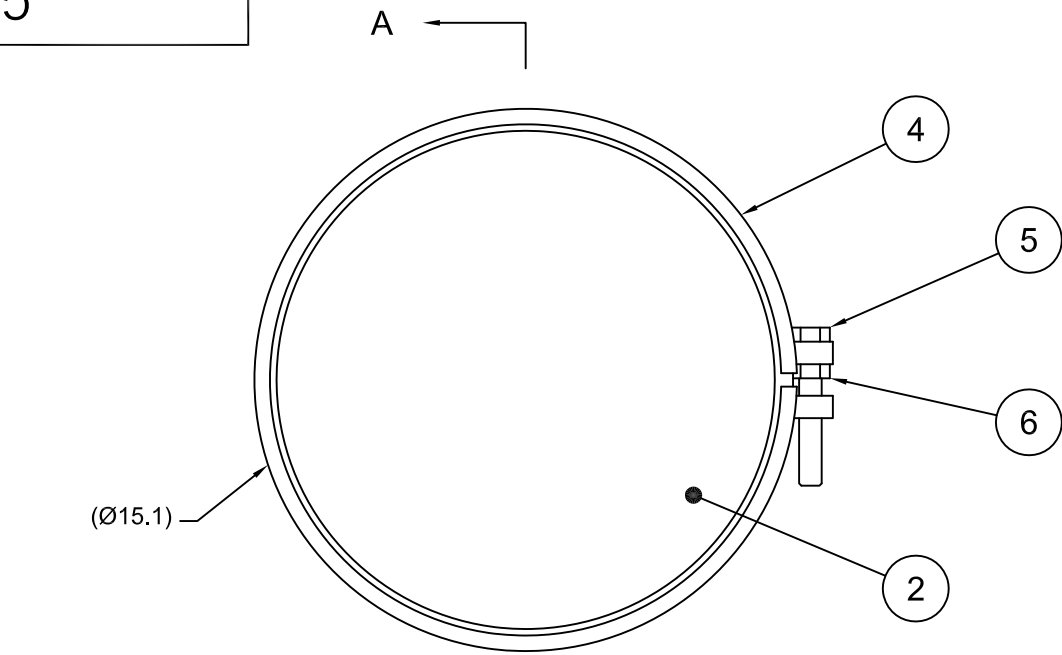
1. THIS DIMENSION REPRESENTS DRUM AFTER BEING PROPERLY ASSEMBLED AND CLOSED PER SKOLNIK CLOSING INSTRUCTIONS
2. TO DETERMINE GREATER ACCURACY OF ANY DIAMETRIC DIMENSION, MEASURING OF CIRCUMFERENCE IS REQUIRED
3. CONSTRUCTION per 49 CFR §178.504 (b)

MATERIAL:

1. CRCQ CARBON STEEL PER ASTM A1008 AND ASTM A568 OR EQUIVALENT
2. MATERIAL THICKNESS: 0.9mm (0.0319 - 0.0370, 20 GAUGE)
3. GASKET MAT'L PER ASTM D1056

FINISH:

1. COVER EXTERIOR PAINTED WHITE (LQ10020)
- BODY/BOTTOM EXTERIOR PAINTED BLACK (LQ10003)



ITEM	P/N	DESCRIPTION	QTY
7		UN DURABLE LABEL	1
6	NT5800	5/8-11UNC HEX JAM NUT	1
5	BT5840	5/8-11UNC X 4in LONG HEX HEAD BOLT	1
4	RBH1413	BOLT RING (MOD A) 14 ID DRUM 13GA	1
3	GE0503-01	GASKET 3/8 DIA RD EPDM	1
2	P1409	COVER 14 ID	1
1		BODY/BOTTOM 5 GALLON DRUM 14 ID	1

UN NUMBER EMBOSSED ON BOTTOM OF DRUM
 1/2" CHARACTERS READING:
 UN/1A2/X120/S/YR
 UN/1A2/Y1.8/150/YR
 0.9 *

TARE WEIGHT:
 15 lbs

THE USE OF INFORMATION CONTAINED HEREIN IS RESTRICTED FOR THE BENEFIT OF SKOLNIK INDUSTRIES ONLY. UNAUTHORIZED USE OR DISCLOSURE, COPYING OR OTHERWISE REPRODUCING (IN ANY MANNER) ANY PORTION OF THIS DRAWING WITHOUT PRIOR WRITTEN PERMISSION OF AN AUTHORIZED OFFICIAL OF SKOLNIK INDUSTRIES IS STRICTLY PROHIBITED.

MFG JR
 DRW LJT
 SLS DR
 APR Jesse Sanchez
 FILE CREATED IN AutoCAD 2002

CHK BG
 QA MD

UNLESS STATED OTHERWISE
 (DIMENSIONS IN PARENTHESIS ARE FOR REFERENCE ONLY!!!)
 ALL DIMENSIONS ARE IN INCHES
 DO NOT SCALE DRAWING
 TOLERANCES:
 FRACTIONS ±1/4
 X° ± 3°
 X.X ± 0.2
 X.XX ± 0.10
 X.XXX ± 0.030

SKOLNIK INDUSTRIES, INC.
 4900 SOUTH KILBOURN AVENUE, CHICAGO, IL 60632

DESCRIPTION
 10 GALLON OPEN HEAD DRUM
 0.9 - 0.9 - 0.9 CRCQ STEEL
 1A2/X120/S & 1A2/Y1.8/150

REL. DATE 04-FEB-2008
 PART NUM. / FILENAME CQ1002
 REV B3