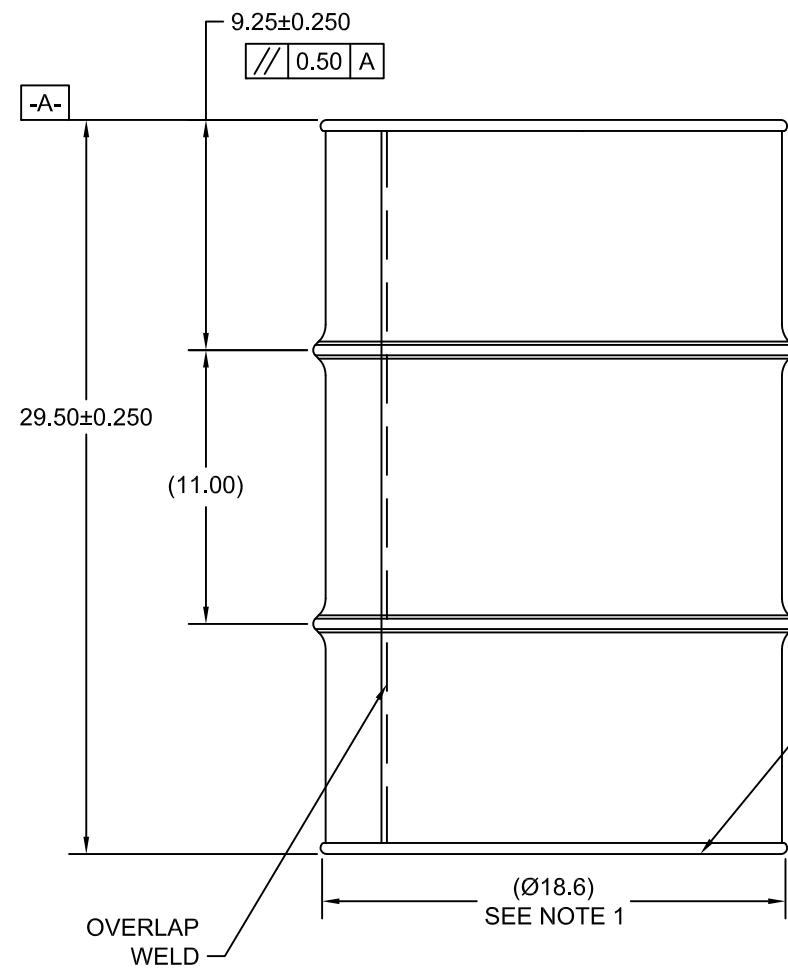
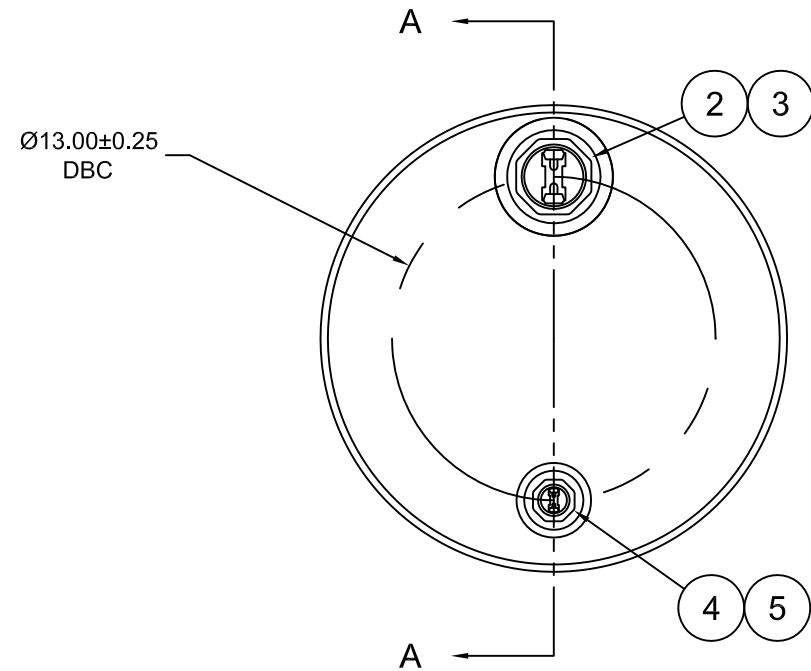


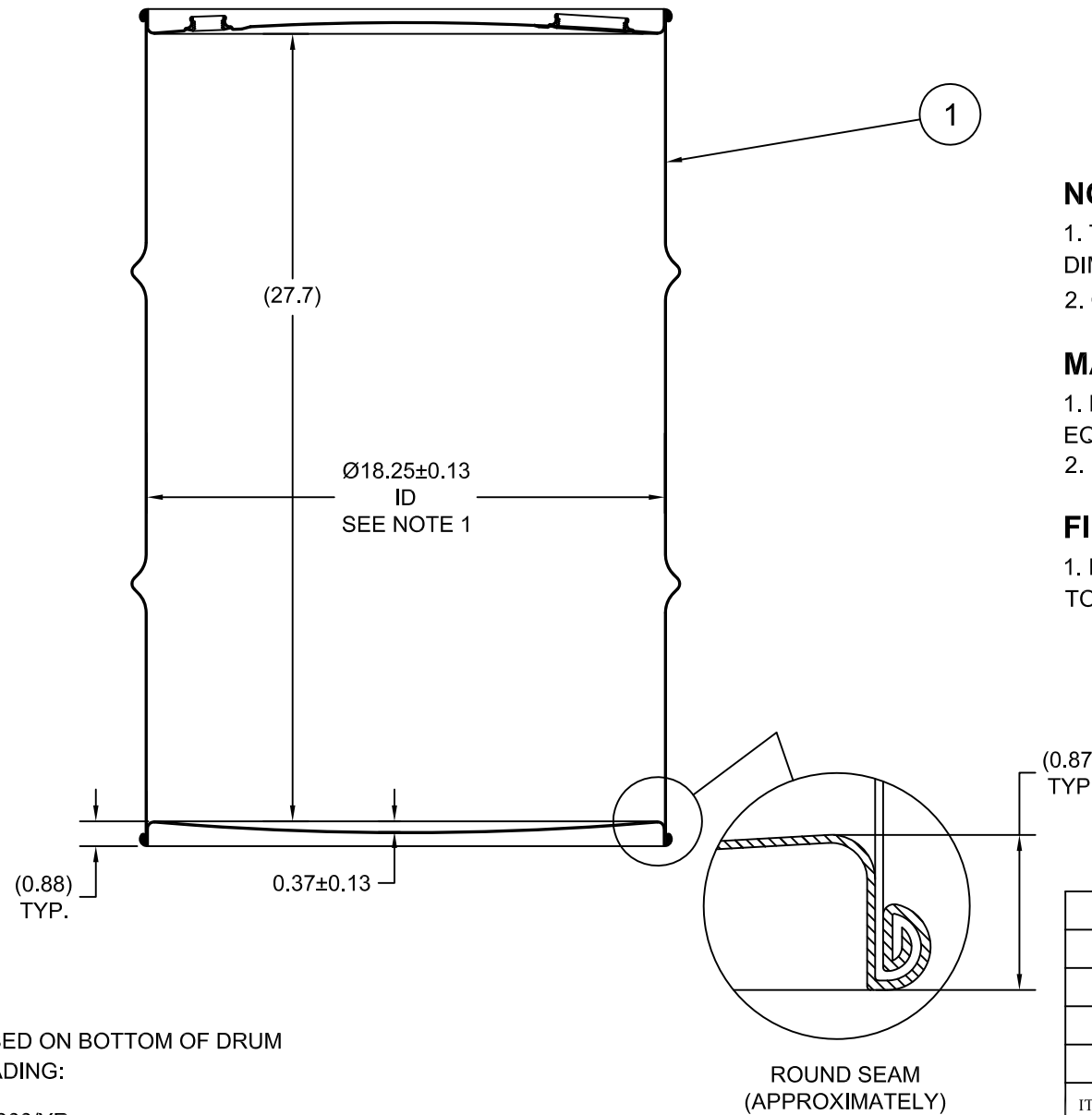
800300

ECN # or INIT	REV	DESCRIPTION	DATE
OE-005	A1	REDRAWN TO AutoCAD	31-MAR-2010
OE-001	A2	ADDED CHIME VIEW	08-MAY-2013



UN NUMBER EMBOSSED ON BOTTOM OF DRUM
 ½" CHARACTERS READING:
 UN/1A1/Y1.5/300/YR
 0.9 *
 (YR = YEAR OF MANUFACTURE)

SECTION A-A
 (FITTING SHOWN WITH PLUGS REMOVED)



NOTES:

1. TO DETERMINE GREATER ACCURACY OF ANY DIAMETRIC DIMENSION, MEASURING OF CIRCUMFERENCE IS REQUIRED
2. CONSTRUCTION per 49 CFR §178.504 (b)

MATERIAL:

1. DRUM CRCQ CARBON STEEL PER ASTM A1008 AND ASTM A568 OR EQUIVALENT
2. MATERIAL THICKNESS: 0.9mm (0.0319 - 0.0370, 20 GAUGE)

FINISH:

1. BODY/BOTTOM EXTERIOR PAINTED BLACK (LQ10003)
- TOP EXTERIOR PAINTED WHITE (LQ10020)

5	PT3000	PLUG 3/4 TS BUNA GASKET	1
4	FT3000	FLANGE 3/4 TS BUNA GASKET	1
3	PT2000	PLUG 2 TS BUNA GASKET	1
2	FT2000	FLANGE 2 TS BUNA GASKET	1
1		30 GALLON TIGHT HEAD DRUM	1
ITEM	P/N	DESCRIPTION	QTY

MFG BR	DRW LJT	CHK BL
SLS DR	QA MD	

APR
 G. Petersen

FILE CREATED IN
 AutoCAD 2002

UNLESS STATED OTHERWISE

(DIMENSIONS IN PARENTHESIS ARE FOR REFERENCE ONLY!!!)

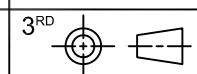
ALL DIMENSIONS ARE IN INCHES
 DO NOT SCALE DRAWING

TOLERANCES:

FRACTIONS ±1/4
 X° ± 3°
 X.X ± 0.2
 X.XX ± 0.10
 X.XXX ± 0.030

TARE WEIGHT:
 26 lbs

THE USE OF INFORMATION CONTAINED HEREIN IS RESTRICTED FOR THE BENEFIT OF SKOLNIK INDUSTRIES ONLY. UNAUTHORIZED USE OR DISCLOSURE, COPYING OR OTHERWISE REPRODUCING (IN ANY MANNER) ANY PORTION OF THIS DRAWING WITHOUT PRIOR WRITTEN PERMISSION OF AN AUTHORIZED OFFICIAL OF SKOLNIK INDUSTRIES IS STRICTLY PROHIBITED.



SKOLNIK INDUSTRIES, INC.
 4900 S. KILBOURN AVE., CHICAGO, IL 60632

DESCRIPTION
 30 GALLON TIGHT HEAD DRUM
 0.9 - 0.9 - 0.9 CRCQ STEEL
 1A1/Y1.5/300

REL. DATE 31-MAR-2010	PART NUMBER/FILENAME CQ3008	REV A2
--------------------------	--------------------------------	-----------