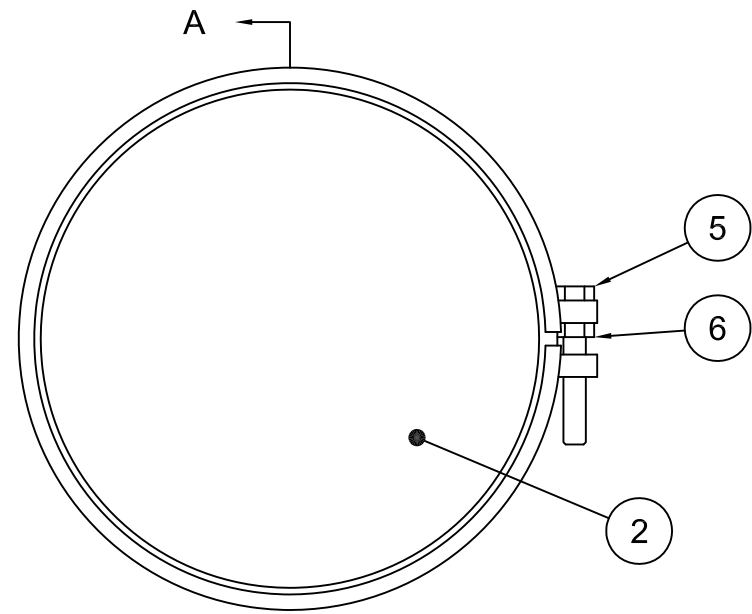
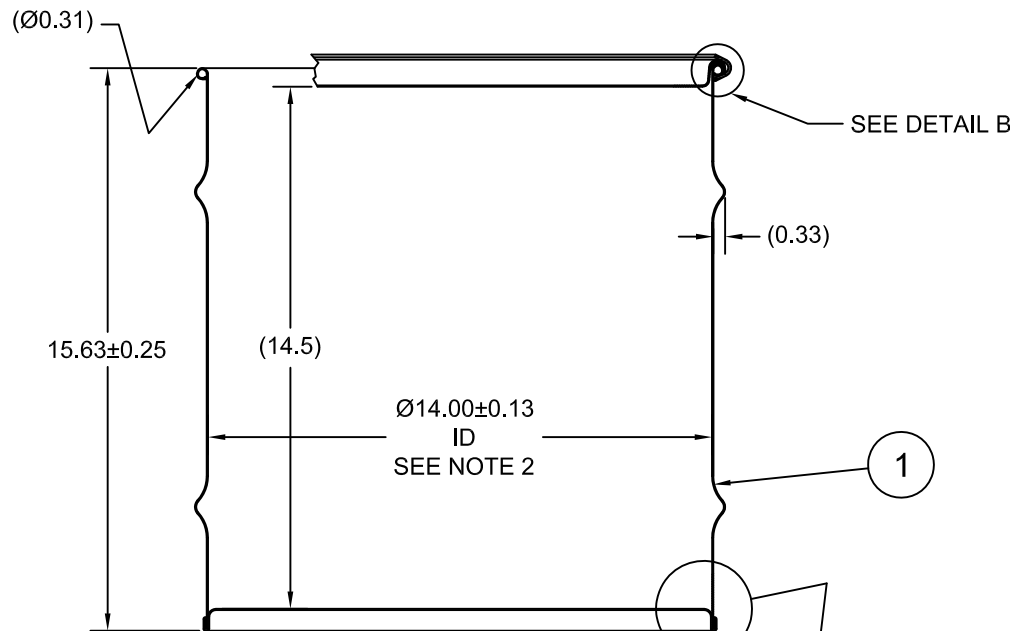


Z080WH

| ECN # or INIT | REV | DESCRIPTION                    | DATE        |
|---------------|-----|--------------------------------|-------------|
| OE-005        | A1  | REDRAWN TO AutoCAD             | 14-DEC-2012 |
| OE-013        | A2  | REVISED HOOP PROFILE           | 19-APR-2013 |
| OE-001        | A3  | CLERICAL ERROR                 | 22-APR-2013 |
| OE-018        | A4  | WAS MULTI-LINGUAL SALVAGE LOGO | 14-OCT-2016 |



SECTION A-A



NOTES:

1. THESE DIMENSIONS REPRESENT DRUM AFTER BEING PROPERLY ASSEMBLED AND CLOSED PER SKOLNIK CLOSING INSTRUCTIONS.
2. TO DETERMINE GREATER ACCURACY OF ANY DIAMETRIC DIMENSION, MEASURING OF CIRCUMFERENCE IS REQUIRED
3. CONSTRUCTION per 49 CFR §178.504 (b)

MATERIAL:

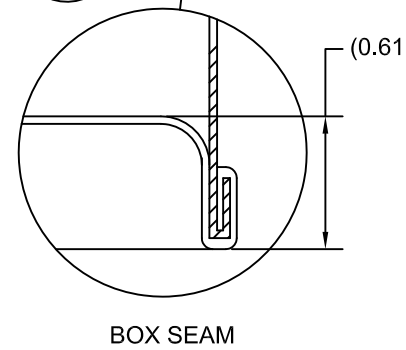
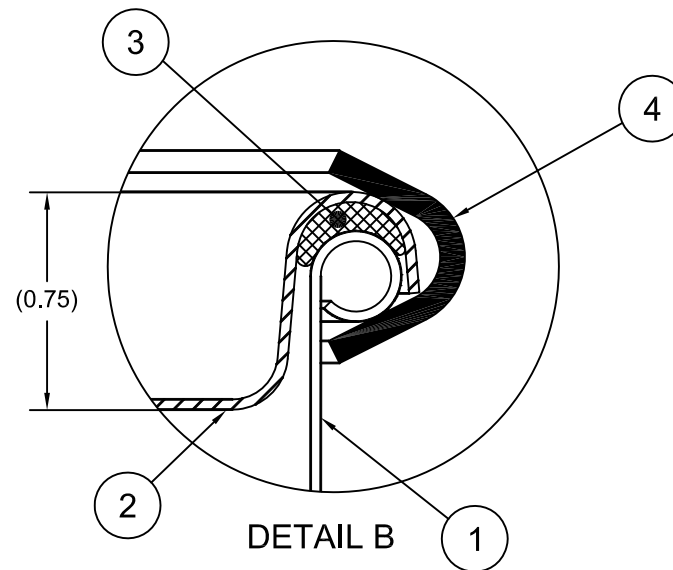
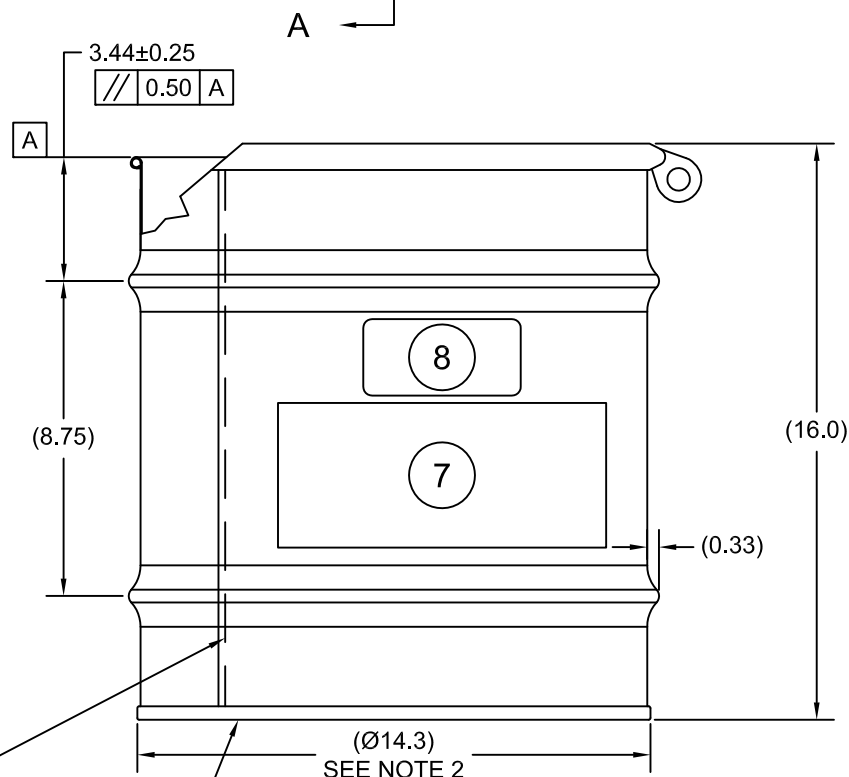
1. DRUM BODY AND COVER CRCQ CARBON STEEL PER ASTM A1008 AND ASTM A568
2. MATERIAL THICKNESS: DRUM 0.9mm (0.0319 - 0.0370, 20 GAUGE)
3. GASKET MAT'L PER ASTM D1056

FINISH:

1. COVER EXTERIOR PAINTED RED (LQ10017)
- BODY/BOTTOM EXTERIOR PAINTED YELLOW (LQ10024)

REFERENCE:

1. UN RATING 'UMBRELLA', 49 CFR §178.601 (g)(3) for HM1002



| ITEM | P/N       | DESCRIPTION                          | QTY |
|------|-----------|--------------------------------------|-----|
| 8    |           | UN DURABLE LABEL                     | 1   |
| 7    | LS1000    | LOGO SALVAGE DRUM                    | 1   |
| 6    | NT5800    | 5/8-11UNC HEX JAM NUT                | 1   |
| 5    | BT5840    | 5/8-11UNC X 4in LONG HEX HEAD BOLT   | 1   |
| 4    | RBH1413   | BOLT RING (MOD A) 5-16G 13GA 5/8 LUG | 1   |
| 3    | GE0503-01 | GASKET, EPDM, Ø3/8                   | 1   |
| 2    | P1409     | COVER, Ø14.00 DRUM, CRCQ STEEL       | 1   |
| 1    |           | BODY/BOTTOM 8 GALLON DRUM 14 ID      | 1   |

OVERLAP WELD

UN NUMBER EMBOSSED ON BOTTOM OF DRUM  
 1/2" CHARACTERS :  
 UN/1A2/X96/S/YR  
 UN/1A2/Y1.8/150/YR  
 0.9 \*

TARE WEIGHT:  
14 lbs

THE USE OF INFORMATION CONTAINED HEREIN IS RESTRICTED FOR THE BENEFIT OF SKOLNIK INDUSTRIES ONLY. UNAUTHORIZED USE OR DISCLOSURE, COPYING OR OTHERWISE REPRODUCING (IN ANY MANNER) ANY PORTION OF THIS DRAWING WITHOUT PRIOR WRITTEN PERMISSION OF AN AUTHORIZED OFFICIAL OF SKOLNIK INDUSTRIES IS STRICTLY PROHIBITED.

APPROVAL  
ON FILE

FILE CREATED IN  
AutoCAD

UNLESS STATED OTHERWISE

(DIMENSIONS IN PARENTHESIS ARE FOR REFERENCE ONLY!!!)

ALL DIMENSIONS ARE IN INCHES  
DO NOT SCALE DRAWING

TOLERANCES:  
FRACTIONS ±1/4  
X° ± 3°  
X.X ± 0.2  
X.XX ± 0.10  
X.XXX ± 0.030

**SKOLNIK** INDUSTRIES, INC.  
4900 SOUTH KILBOURN AVENUE, CHICAGO, IL 60632

DESCRIPTION  
8 GALLON OPEN HEAD DRUM  
0.9 - 0.9 - 0.9 CRCQ STEEL  
1A2/X96/S & 1A2/Y1.8/150

|           |                      |     |
|-----------|----------------------|-----|
| REL. DATE | PART NUM. / FILENAME | REV |
| -         | HM0802               | A4  |

BEST PRINTED ON B-SIZE PAPER (YR = YEAR OF MANUFACTURE)