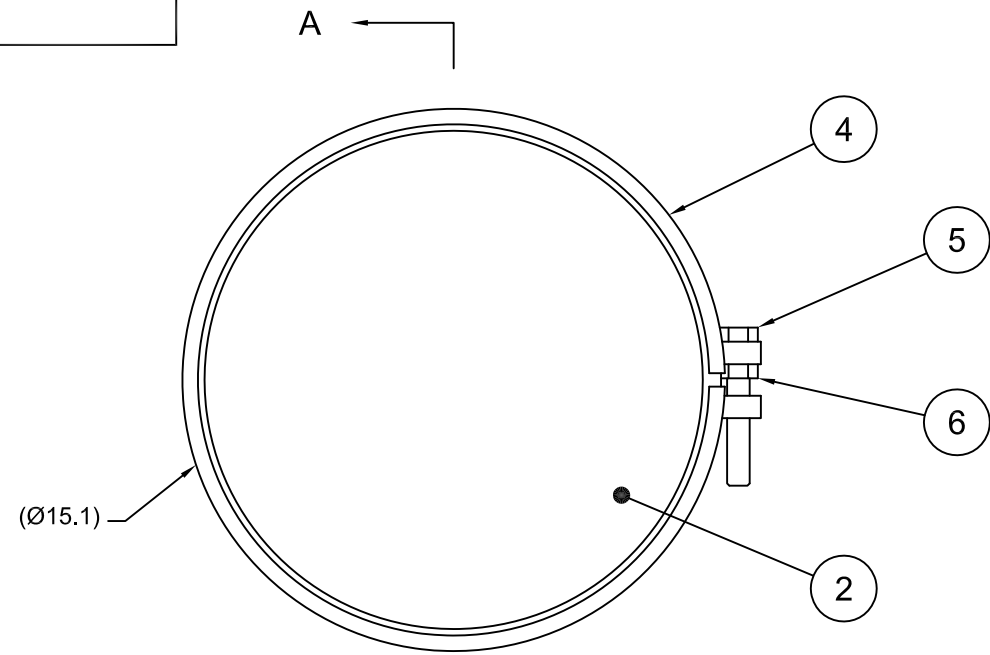
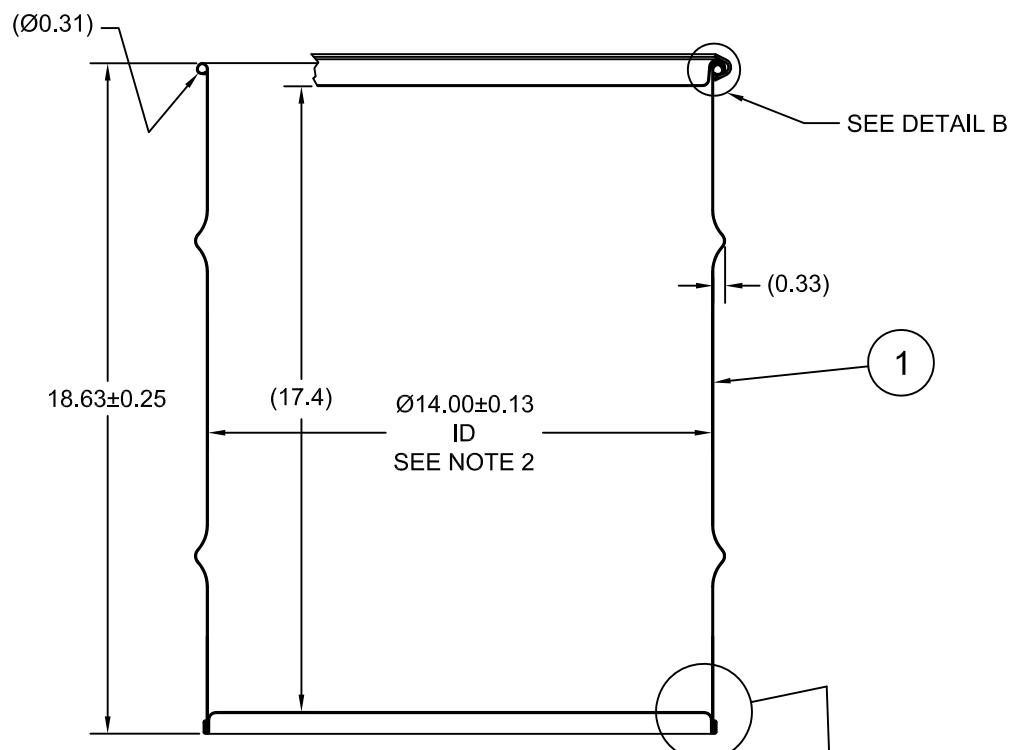


Z001WH

ECN # or INIT	REV	DESCRIPTION	DATE
OE-005	A1	REDRAWN TO AutoCAD	17-DEC-2012
OE-001	A2	CLERICAL ERROR	12-APR-2013
OE-013	A3	REVISED HOOP PROFILE	19-APR-2013
OE-018	A4	WAS MULTI-LINGUAL SALVAGE LOGO	14-OCT-2016



SECTION A-A



NOTES:

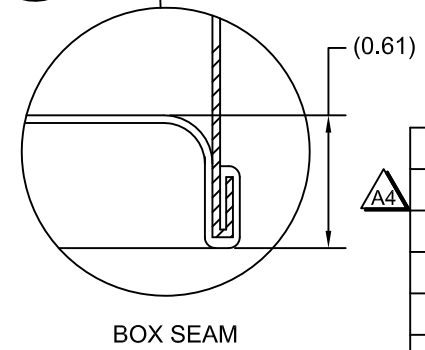
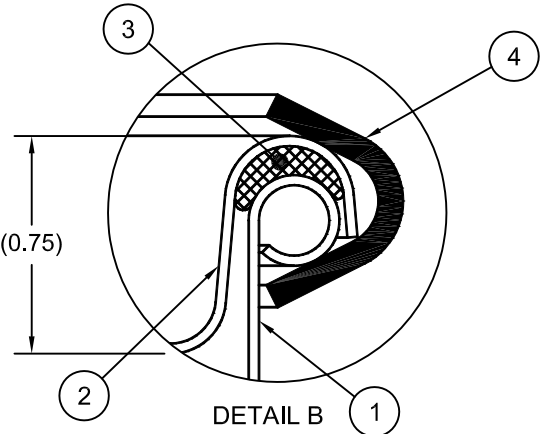
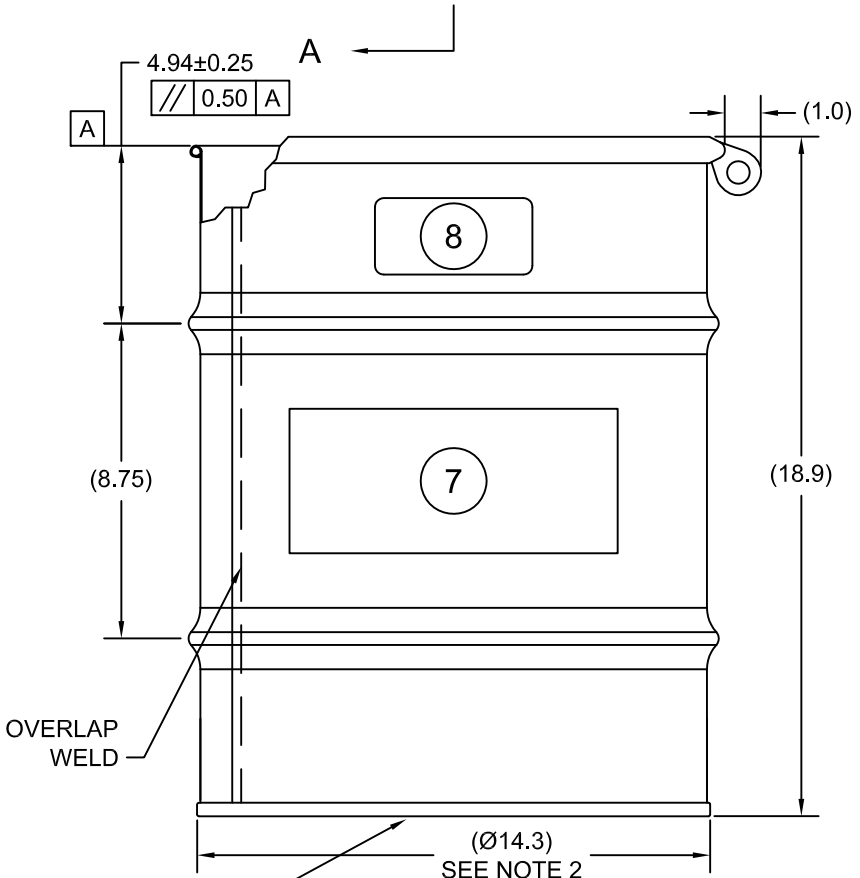
1. THESE DIMENSIONS REPRESENT DRUM AFTER BEING PROPERLY ASSEMBLED AND CLOSED PER SKOLNIK CLOSING INSTRUCTIONS.
2. TO DETERMINE GREATER ACCURACY OF ANY DIAMETRIC DIMENSION, MEASURING OF CIRCUMFERENCE IS REQUIRED
3. CONSTRUCTION per 49 CFR §178.504 (b)

MATERIAL:

1. DRUM BODY AND COVER CRCQ CARBON STEEL PER ASTM A1008 AND ASTM A568
2. MATERIAL THICKNESS: DRUM 0.9mm (0.0319 - 0.0370, 20 GAUGE)
3. GASKET MAT'L PER ASTM D1056

FINISH:

1. COVER EXTERIOR PAINTED RED (LQ10017)
- BODY/BOTTOM EXTERIOR PAINTED YELLOW (LQ10024)



ITEM	P/N	DESCRIPTION	QTY
8		UN DURABLE LABEL	1
7	LS1000	LOGO SALVAGE DRUM	1
6	NT5800	5/8-11UNC HEX JAM NUT	1
5	BT5840	5/8-11UNC X 4in LONG HEX HEAD BOLT	1
4	RBH1413	BOLT RING (MOD A) 5-16G 13GA 5/8 LUG	1
3	GE0503-01	GASKET 3/8 DIA RD EPDM	1
2	P1409	COVER Ø14.00 ID	1
1		BODY/BOTTOM Ø14.00 ID DRUM	1

UN NUMBER EMBOSSED ON BOTTOM OF DRUM  
 1/2" CHARACTERS READING:  
 UN/1A2/X120/S/YR  
 UN/1A2/Y1.8/150/YR  
 0.9 \*

TARE WEIGHT:  
 15 lbs

THE USE OF INFORMATION CONTAINED HEREIN IS RESTRICTED FOR THE BENEFIT OF SKOLNIK INDUSTRIES ONLY. UNAUTHORIZED USE OR DISCLOSURE, COPYING OR OTHERWISE REPRODUCING (IN ANY MANNER) ANY PORTION OF THIS DRAWING WITHOUT PRIOR WRITTEN PERMISSION OF AN AUTHORIZED OFFICIAL OF SKOLNIK INDUSTRIES IS STRICTLY PROHIBITED.

APPROVAL  
 ON FILE

FILE CREATED IN  
 AutoCAD

UNLESS STATED OTHERWISE

(DIMENSIONS IN PARENTHESIS ARE FOR REFERENCE ONLY!!!)  
 ALL DIMENSIONS ARE IN INCHES  
 DO NOT SCALE DRAWING  
 TOLERANCES:  
 FRACTIONS ±1/4  
 X° ± 3°  
 X.X ± 0.2  
 X.XX ± 0.10  
 X.XXX ± 0.030

**SKOLNIK** INDUSTRIES, INC.  
 4900 SOUTH KILBOURN AVENUE, CHICAGO, IL 60632

DESCRIPTION  
 10 GALLON OPEN HEAD DRUM  
 0.9 - 0.9 - 0.9 CRCQ STEEL  
 1A2/X120/S & 1A2/Y1.8/150

REL. DATE	PART NUM. / FILENAME	REV
-	HM1002	A4