

10011WH

ECN #	REV	DESCRIPTION	DATE
	00	RELEASE	27-JUL-2004
OE-001	A1	CLERICAL ERROR	07-APR-2010
10-007	A2	BOLT WAS 4in LONG	29-NOV-2010
10-008	A2	GASKET WAS GS1101	29-NOV-2010
OE-001	A3	CLERICAL ERROR	10-APR-2013
OE-001	A4	ADDED SEAM PROFILE	24-APR-2013
OE-018	A5	WAS MULTI-LINGUAL SALVAGE LOGO	21-OCT-2016

NOTES:

1. THESE DIMENSIONS REPRESENT DRUM AFTER BEING PROPERLY ASSEMBLED AND CLOSED PER SKOLNIK CLOSING INSTRUCTIONS
2. TO DETERMINE GREATER ACCURACY OF ANY DIAMETRIC DIMENSION, MEASURING OF CIRCUMFERENCE IS REQUIRED
3. CONSTRUCTION per 49 CFR §178.504 (b)

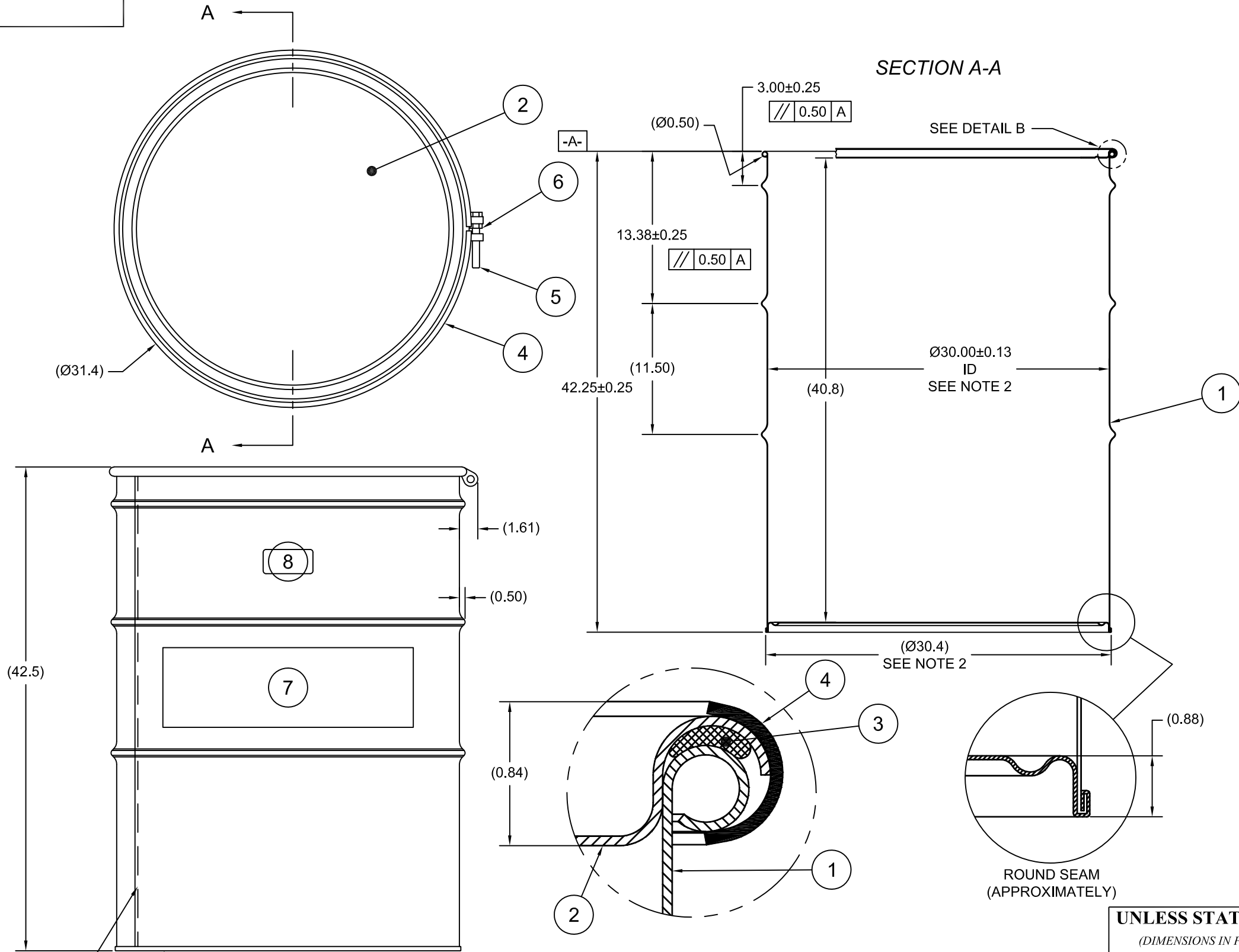
MATERIAL:

1. DRUM BODY AND COVER CRCQ CARBON STEEL PER ASTM A1008 AND ASTM A568
2. MATERIAL THICKNESS 1.5mm (0.0543 - 0.0590;16 GAUGE)
3. GASKET MAT'L PER ASTM D1056

FINISH:

1. DRUM BODY EXTERIOR PAINTED YELLOW (LQ10024)
COVER EXTERIOR PAINTED RED (LQ10017).

ITEM	P/N	DESCRIPTION	QTY
8		UN DURABLE LABEL	1
7	LS1000	LOGO SALVAGE DRUM	1
6	NT5800	5/8-11UNC HEX JAM NUT	1
5	BT5845	5/8-11UNC X 4 1/2in LONG HEX HEAD BOLT	1
4	RB1112	BOLT RING Ø30in 12GA 5/8 LUG	1
3	GE1101	Ø1/2in ROUND EPDM GASKET	1
2	P3015	COVER Ø30in ID	1
1		DRUM BODY AND BOTTOM	1



OVERLAP WELD

UN NUMBER EMBOSSED ON BOTTOM OF DRUM
1/2" CHARACTERS READING:
UN/1A2/Y409/S/YR
1.5 *
(YR = YEAR OF MANUFACTURE)

TARE WEIGHT:
100 lbs

THE USE OF INFORMATION CONTAINED HEREIN IS RESTRICTED FOR THE BENEFIT OF SKOLNIK INDUSTRIES ONLY. UNAUTHORIZED USE OR DISCLOSURE, COPYING OR OTHERWISE REPRODUCING (IN ANY MANNER) ANY PORTION OF THIS DRAWING WITHOUT PRIOR WRITTEN PERMISSION OF AN AUTHORIZED OFFICIAL OF SKOLNIK INDUSTRIES IS STRICTLY PROHIBITED.

APPROVAL ON FILE

FILE CREATED IN
AutoCAD

UNLESS STATED OTHERWISE

(DIMENSIONS IN PARENTHESIS ARE FOR REFERENCE ONLY!!!)
ALL DIMENSIONS ARE IN INCHES
DO NOT SCALE DRAWING
TOLERANCES:
FRACTIONS ±1/4
X° ± 3°
X.X ± 0.2
X.XX ± 0.10
X.XXX ± 0.030

SKOLNIK INDUSTRIES, INC.
4900 SOUTH KILBOURN AVENUE, CHICAGO, IL 60632

DESCRIPTION
110 GALLON OPEN HEAD DRUM
1.5 - 1.5 - 1.5 CRCQ STEEL
1A2/Y409/S

REL. DATE 22-MAY-2007	PART NUM. / FILENAME HM11001	REV A5
--------------------------	---------------------------------	-----------