

Z091WH

| ECN # or INIT | REV | DESCRIPTION                             | DATE        |
|---------------|-----|---|-------------|
| OE-005        | A1  | REDRAWN TO AutoCAD                      | 23-JAN-2013 |
| OE-001        | A2  | ADDED CURL DIMENSION                    | 10-APR-2013 |
| OE-013        | A3  | REVISED HOOP PROFILE                    | 22-APR-2013 |
| OE-013        | A3  | ADDED CHIME VIEW & REVISED HOOP PROFILE | 19-APR-2013 |
| OE-018        | A4  | WAS MULTI-LINGUAL SALVAGE LOGO          | 14-OCT-2016 |

**NOTES:**

1. THESE DIMENSIONS REPRESENT DRUM AFTER BEING PROPERLY ASSEMBLED AND CLOSED PER SKOLNIK CLOSING INSTRUCTIONS.
2. TO DETERMINE GREATER ACCURACY OF ANY DIAMETRIC DIMENSION, MEASURING OF CIRCUMFERENCE IS REQUIRED
3. CONSTRUCTION per 49 CFR §178.504 (b)

**MATERIAL:**

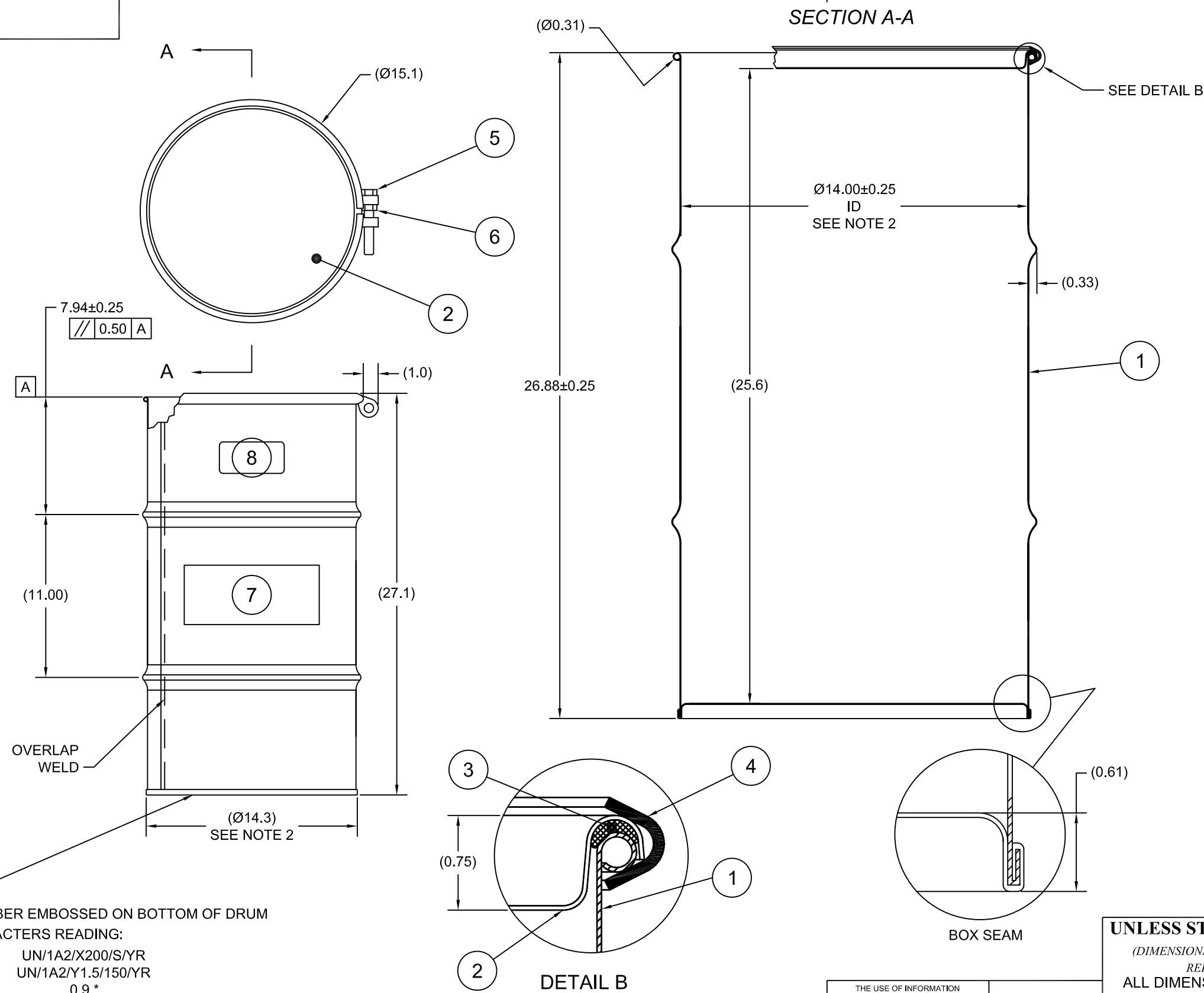
1. DRUM BODY AND COVER CRCQ CARBON STEEL PER ASTM A1008 AND ASTM A568
2. MATERIAL THICKNESS: DRUM 0.9mm (0.0319 - 0.0370, 20 GAUGE)
3. GASKET MAT'L PER ASTM D1056

**FINISH:**

1. COVER EXTERIOR PAINTED RED (LQ10017)  
BODY/BOTTOM EXTERIOR PAINTED YELLOW (LQ10024)

| ITEM | P/N       | DESCRIPTION                             | QTY |
|------|-----------|---|-----|
| 8    |           | UN DURABLE LABEL                        | 1   |
| 7    | LS1000    | LOGO SALVAGE DRUM                       | 1   |
| 6    | NT5800    | 5/8-11UNC HEX JAM NUT                   | 1   |
| 5    | BT5840    | 5/8-11UNC X 4in LONG HEX HEAD BOLT      | 1   |
| 4    | RBH1413   | 3 - 16 GAL BOLT RING (HP) 13 GA 5/8 LUG | 1   |
| 3    | GE0503-01 | GASKET, EPDM, Ø3/8                      | 1   |
| 2    | P1409     | COVER, Ø14.00 ID DRUM, CRCQ STEEL       | 1   |
| 1    |           | BODY/BOTTOM 16 GALLON DRUM 14.0 ID      | 1   |

△A4



UN NUMBER EMBOSSED ON BOTTOM OF DRUM  
 1/2" CHARACTERS READING:  
 UN/1A2/X200/S/YR  
 UN/1A2/Y1.5/150/YR  
 0.9\*  
 (YR = YEAR OF MANUFACTURE)

TARE WEIGHT:  
19 lbs

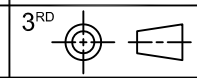
THE USE OF INFORMATION CONTAINED HEREIN IS RESTRICTED FOR THE BENEFIT OF SKOLNIK INDUSTRIES ONLY. UNAUTHORIZED USE OR DISCLOSURE, COPYING OR OTHERWISE REPRODUCING (IN ANY MANNER) ANY PORTION OF THIS DRAWING WITHOUT PRIOR WRITTEN PERMISSION OF AN AUTHORIZED OFFICIAL OF SKOLNIK INDUSTRIES IS STRICTLY PROHIBITED.

**APPROVAL ON FILE**

FILE CREATED IN AutoCAD

**UNLESS STATED OTHERWISE**

(DIMENSIONS IN PARENTHESIS ARE FOR REFERENCE ONLY!!!)  
 ALL DIMENSIONS ARE IN INCHES  
 DO NOT SCALE DRAWING  
 TOLERANCES:  
 FRACTIONS ±1/4  
 X° ± 3°  
 X.X ± 0.2  
 X.XX ± 0.10  
 X.XXX ± 0.030



**SKOLNIK INDUSTRIES, INC.**  
 4900 SOUTH KILBOURN AVENUE, CHICAGO, IL 60632

DESCRIPTION  
 16 GALLON OPEN HEAD DRUM  
 0.9 - 0.9 - 0.9 CRCQ STEEL  
 1A2/X200/S & 1A2/Y1.5/150

|           |                      |     |
|-----------|----------------------|-----|
| REL. DATE | PART NUM. / FILENAME | REV |
| -         | HM1602               | A4  |