

01058MH

ECN # or INIT	REV	DESCRIPTION	DATE
	A	RELEASE	01-JUN-2004
LJT	A1	CHG'D NOTES, MADE BORDER & TOL STD	11-NOV-2006
		ADD'D [mm]	
LJT	B1	BOTTOM HOOP WAS 12 1/8 (CLERICAL ERR)	25-JAN-2007
LJT	B2	WAS 38 3/4 (CLERICAL ERR), ETC.	01-MAR-2010
OE-001	B3	CLERICAL ERROR	10-APR-2013
OE-001	B4	ADDED CHIME PROFILE	24-APR-2013
OE-018	B5	WAS MULTI-LINGUAL SALVAGE LOGO	20-OCT-2016

NOTES:

1. THESE DIMENSIONS REPRESENT DRUM AFTER BEING PROPERLY ASSEMBLED AND CLOSED PER SKOLNIK CLOSING INSTRUCTIONS
2. TO DETERMINE GREATER ACCURACY OF ANY DIAMETRIC DIMENSION, MEASURING OF CIRCUMFERENCE IS REQUIRED
3. CONSTRUCTION per 49 CFR §178.504 (b)

MATERIAL:

1. DRUM BODY AND COVER CRCQ CARBON STEEL PER ASTM A1008 AND ASTM A568
2. MATERIAL THICKNESS 1.5mm (0.0543 - 0.0590;16 GAUGE).
3. GASKET MAT'L PER ASTM D1056.

FINISH:

1. BODY/BOTTOM EXTERIOR PAINTED YELLOW (LQ10024)
COVER EXTERIOR PAINTED RED (LQ10017)

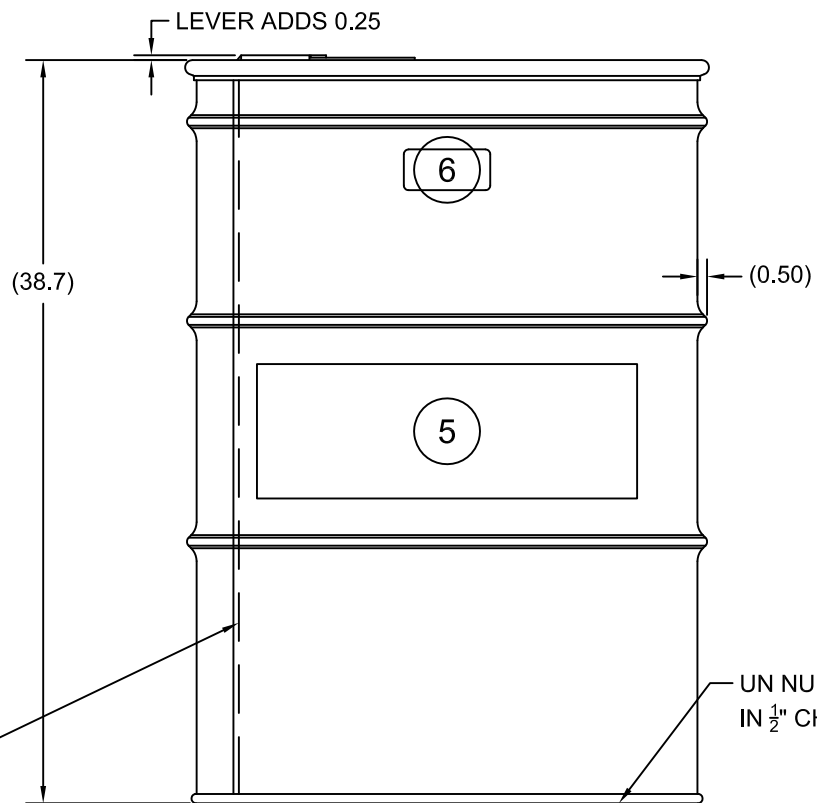
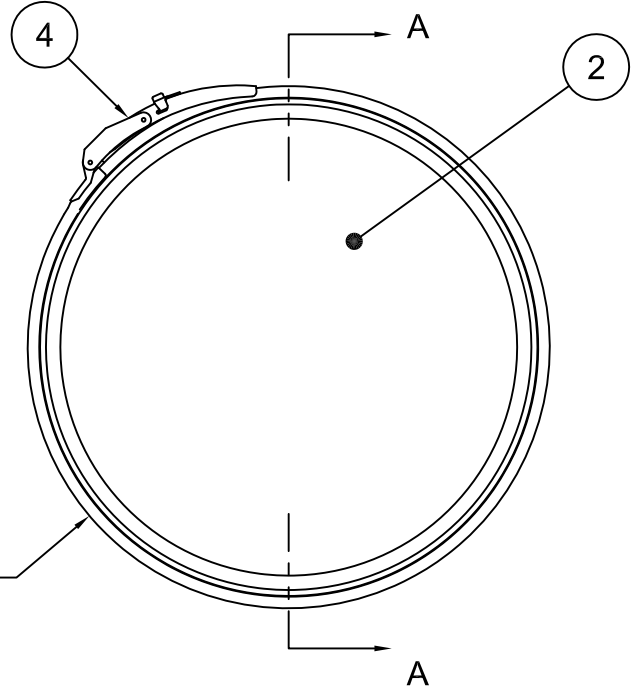
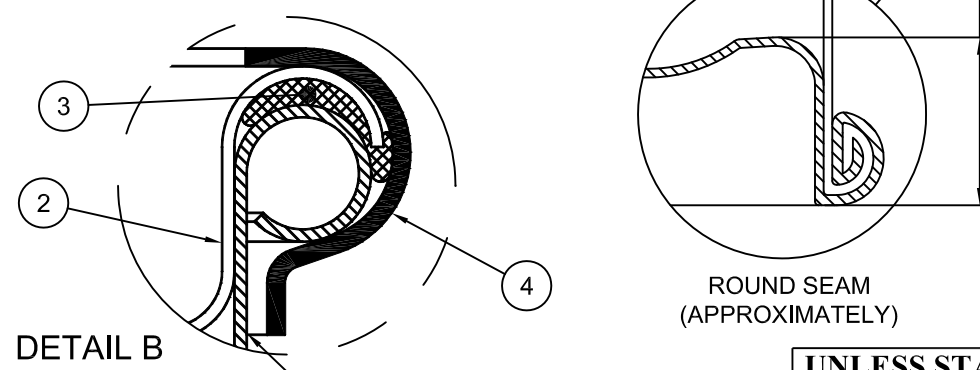
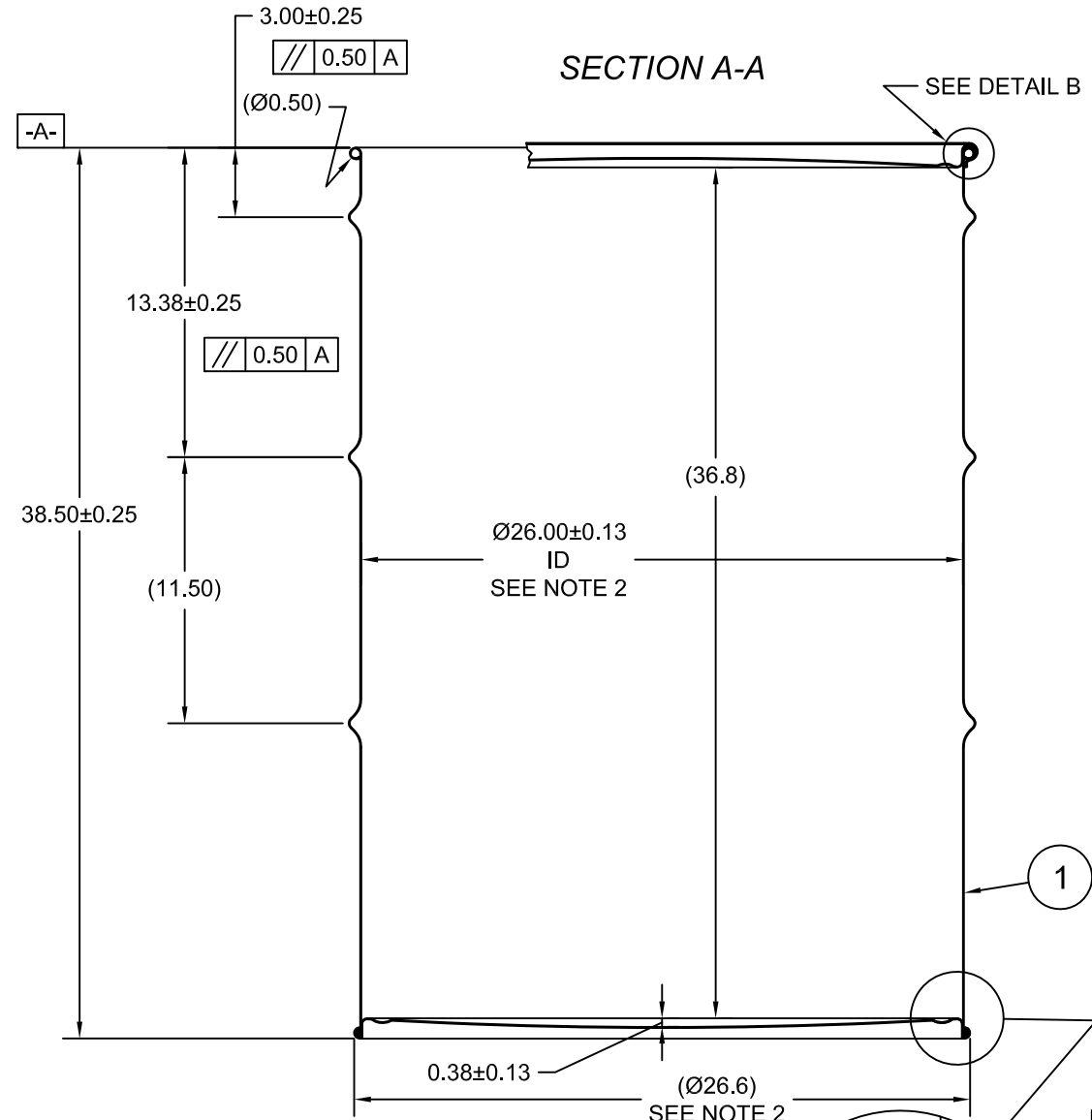
ITEM	P/N	DESCRIPTION	QTY
6		UN DURABLE LABEL	1
5	LS1000	LOGO SALVAGE DRUM	1
4	RQ8513	CLOSURE RING, QUICK LEVERLOCK	1
3	GE8500	GASKET EPDM IN-COVER D	1
2	P2615	COVER Ø26 ID	1
1		BODY/BOTTOM 85 GALLON DRUM Ø26 ID	1

UNLESS STATED OTHERWISE
(DIMENSIONS IN PARENTHESIS ARE FOR REFERENCE ONLY!!!)
ALL DIMENSIONS ARE IN INCHES
DO NOT SCALE DRAWING
TOLERANCES:
FRACTIONS ±1/4
X° ± 3°
X.X ± 0.2
X.XX ± 0.10
X.XXX ± 0.030

SKOLNIK INDUSTRIES, INC.
4900 SOUTH KILBOURN AVENUE, CHICAGO, IL 60632

DESCRIPTION
85 GALLON OPEN HEAD WITH LEVER LOCK
1.5 - 1.5 - 1.5 CRCQ
1A2/X440/S & 1A2T/Y320/S

REL. DATE 01-JUN-2004
PART NUM. / FILENAME HM8501Q
REV B5



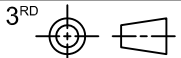
UN NUMBER EMBOSSED ON BOTTOM OF DRUM
IN 1/2" CHARACTERS READING:
UN/1A2/X440/S/YR
UN/1A2T/Y320/S/YR
1.5 *
(YR = YEAR OF MANUFACTURE)

TARE WEIGHT:
82 lbs

THE USE OF INFORMATION CONTAINED HEREIN IS RESTRICTED FOR THE BENEFIT OF SKOLNIK INDUSTRIES ONLY. UNAUTHORIZED USE OR DISCLOSURE, COPYING OR OTHERWISE REPRODUCING (IN ANY MANNER) ANY PORTION OF THIS DRAWING WITHOUT PRIOR WRITTEN PERMISSION OF AN AUTHORIZED OFFICIAL OF SKOLNIK INDUSTRIES IS STRICTLY PROHIBITED.

APPROVAL ON FILE

FILE CREATED IN AutoCAD



BEST PRINTED ON B-SIZE PAPER