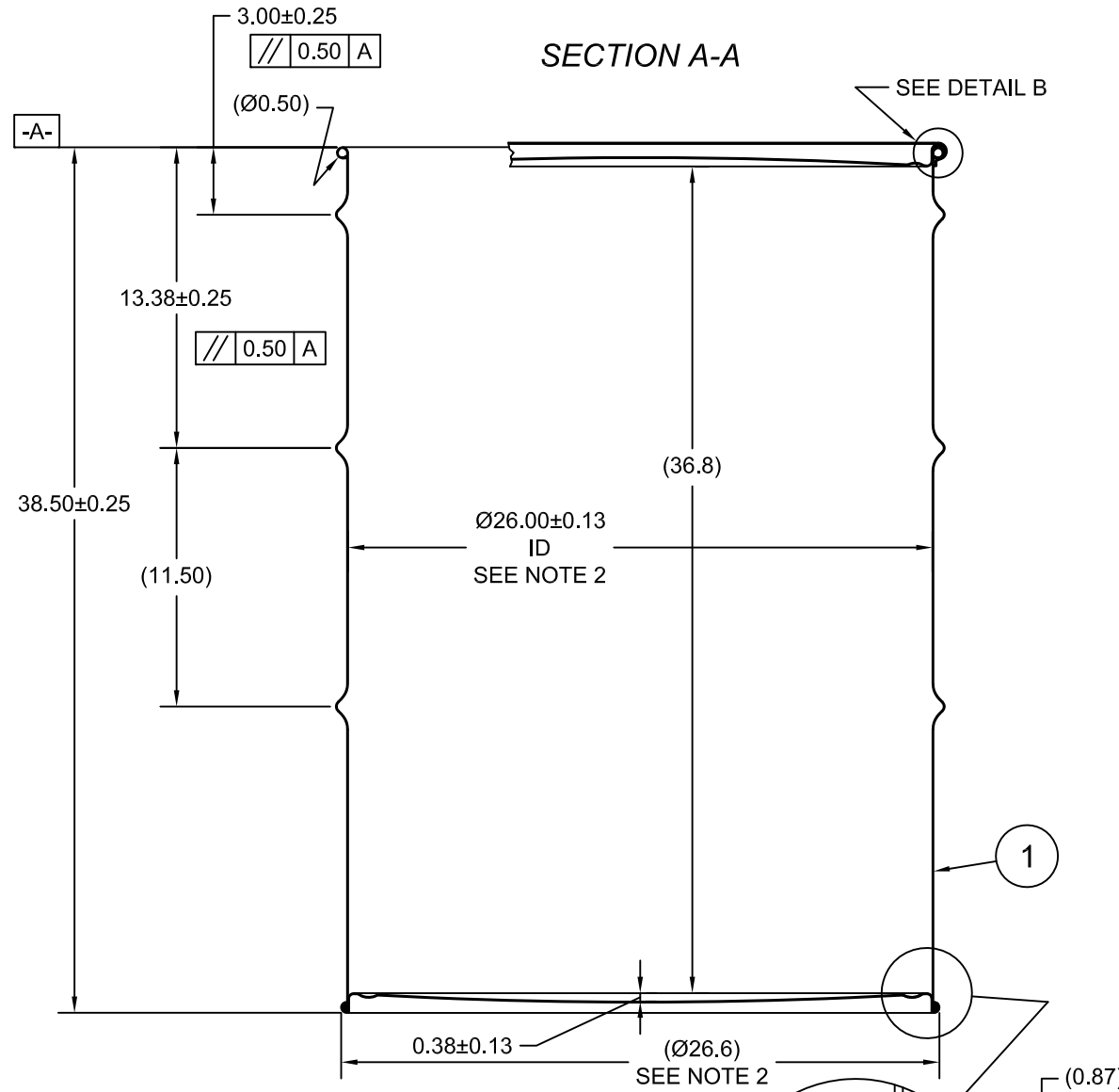
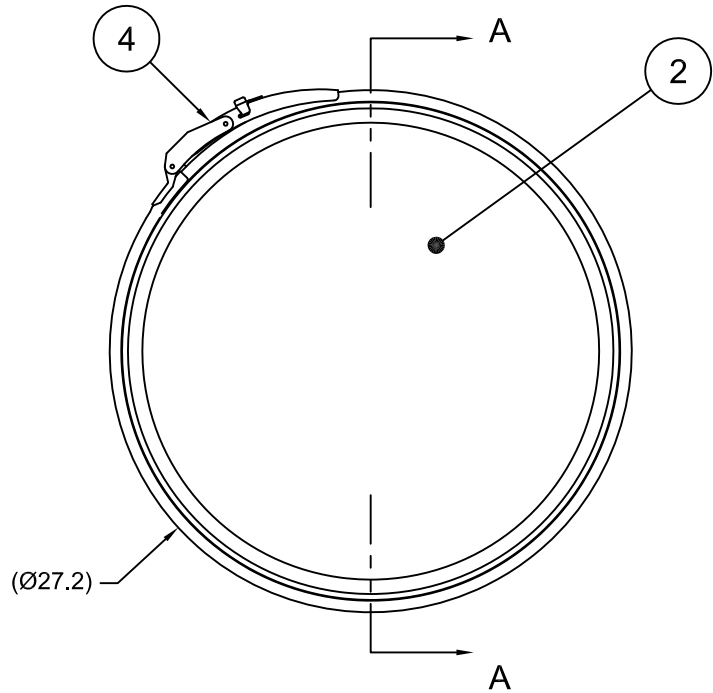


HM8519Q

ECN # or INIT	REV	DESCRIPTION	DATE
OE-005	A1	REDRAWN TO AutoCAD	25-FEB-2013
OE-001	A2	CLERICAL ERROR	10-APR-2013
OE-001	A3	ADDED CHIME PROFILE	24-APR-2013
OE-018	A4	WAS MULTI-LINGUAL SALVAGE LOGO	21-OCT-2016



**NOTES:**

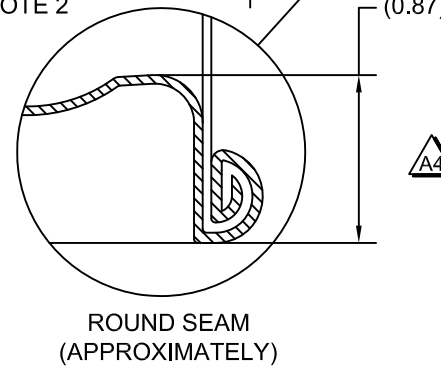
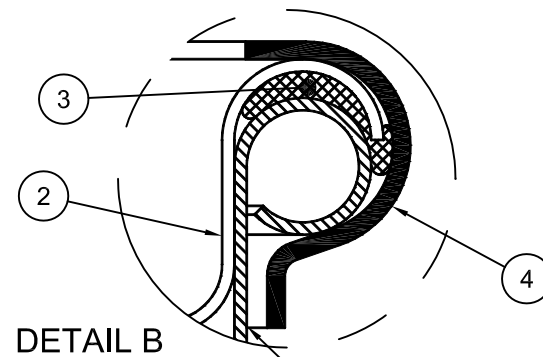
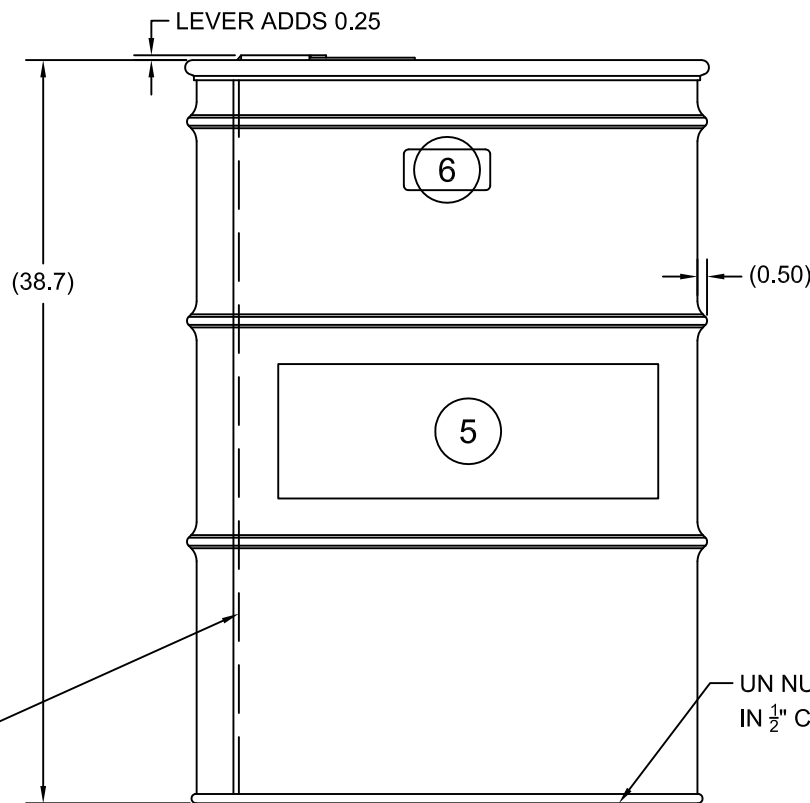
1. THESE DIMENSIONS REPRESENT DRUM AFTER BEING PROPERLY ASSEMBLED AND CLOSED PER SKOLNIK CLOSING INSTRUCTIONS
2. TO DETERMINE GREATER ACCURACY OF ANY DIAMETRIC DIMENSION, MEASURING OF CIRCUMFERENCE IS REQUIRED
3. CONSTRUCTION per 49 CFR §178.504 (b)

**MATERIAL:**

1. DRUM BODY AND COVER CRCQ CARBON STEEL PER ASTM A1008 AND ASTM A568.
2. MATERIAL THICKNESS 1.0mm (0.0380 - 0.0420; 19 GAUGE).
3. GASKET MAT'L PER ASTM D1056.

**FINISH:**

1. BODY/BOTTOM EXTERIOR PAINTED YELLOW (LQ10024)  
COVER EXTERIOR PAINTED RED (LQ10017)



ITEM	P/N	DESCRIPTION	QTY
6		UN DURABLE LABEL	1
5	LS1000	LOGO SALVAGE DRUM	1
4	RQ8513	CLOSURE RING, QUICK LEVERLOCK	1
3	GE8500	GASKET EPDM IN-COVER D	1
2	P2610	COVER Ø26 ID	1
1		BODY/BOTTOM 85 GALLON DRUM Ø26 ID	1

UN NUMBER EMBOSSED ON BOTTOM OF DRUM IN 1/2" CHARACTERS READING:

UN/1A2/X440/S/YR

1.0 \*

TARE WEIGHT: 60 lbs

(YR = YEAR OF MANUFACTURE)

**UNLESS STATED OTHERWISE**

(DIMENSIONS IN PARENTHESIS ARE FOR REFERENCE ONLY!!!)

ALL DIMENSIONS ARE IN INCHES  
DO NOT SCALE DRAWING

TOLERANCES:

FRACTIONS ±1/4

X° ± 3°

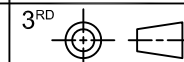
X.X ± 0.2

X.XX ± 0.10

X.XXX ± 0.030

**APPROVAL ON FILE**

FILE CREATED IN AutoCAD



THE USE OF INFORMATION CONTAINED HEREIN IS RESTRICTED FOR THE BENEFIT OF SKOLNIK INDUSTRIES ONLY. UNAUTHORIZED USE OR DISCLOSURE, COPYING OR OTHERWISE REPRODUCING (IN ANY MANNER) ANY PORTION OF THIS DRAWING WITHOUT PRIOR WRITTEN PERMISSION OF AN AUTHORIZED OFFICIAL OF SKOLNIK INDUSTRIES IS STRICTLY PROHIBITED.

**SKOLNIK INDUSTRIES, INC.**  
4900 SOUTH KILBOURN AVENUE, CHICAGO, IL 60632

DESCRIPTION  
85 GALLON OPEN HEAD WITH LEVER LOCK  
1.0 - 1.0 - 1.0 CRCQ  
1A2/X440/S

REL. DATE	PART NUM. / FILENAME	REV
-	HM8519Q	A4