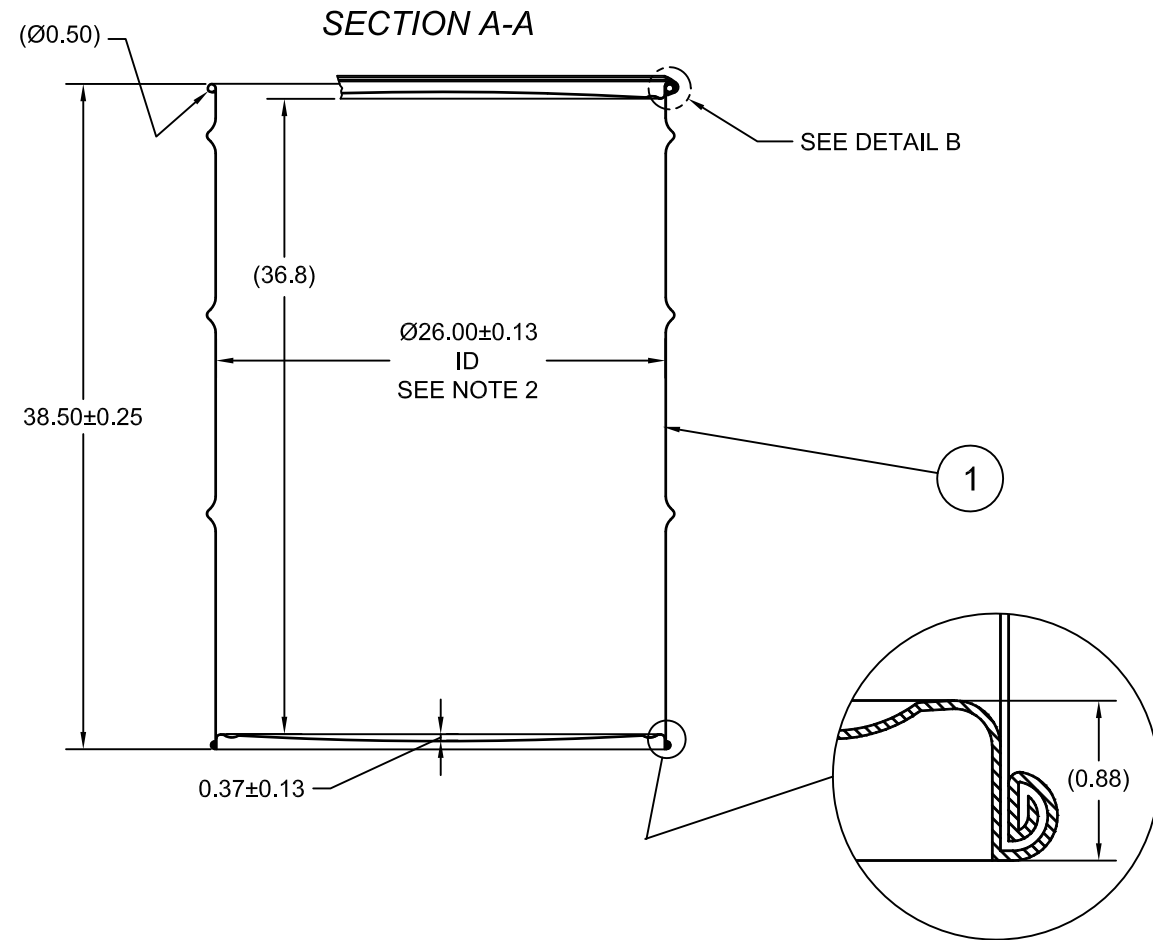
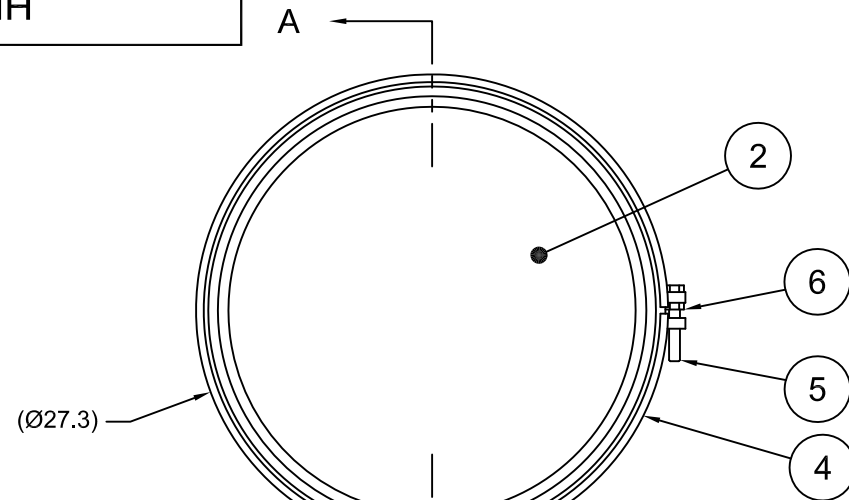


6158WH

| ECN # or INIT | REV | DESCRIPTION                    | DATE        |
|---------------|-----|--------------------------------|-------------|
| OE-005        | A1  | REDRAWN TO AutoCAD             | 19-MAR-2012 |
| OE-001        | A2  | CLERICAL ERROR                 | 12-APR-2013 |
| OE-018        | A3  | WAS MULTI-LINGUAL SALVAGE LOGO | 21-OCT-2016 |



**NOTES:**

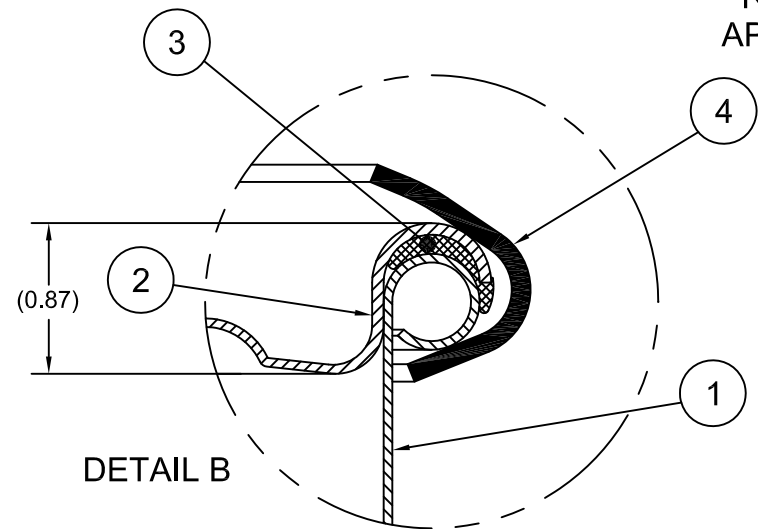
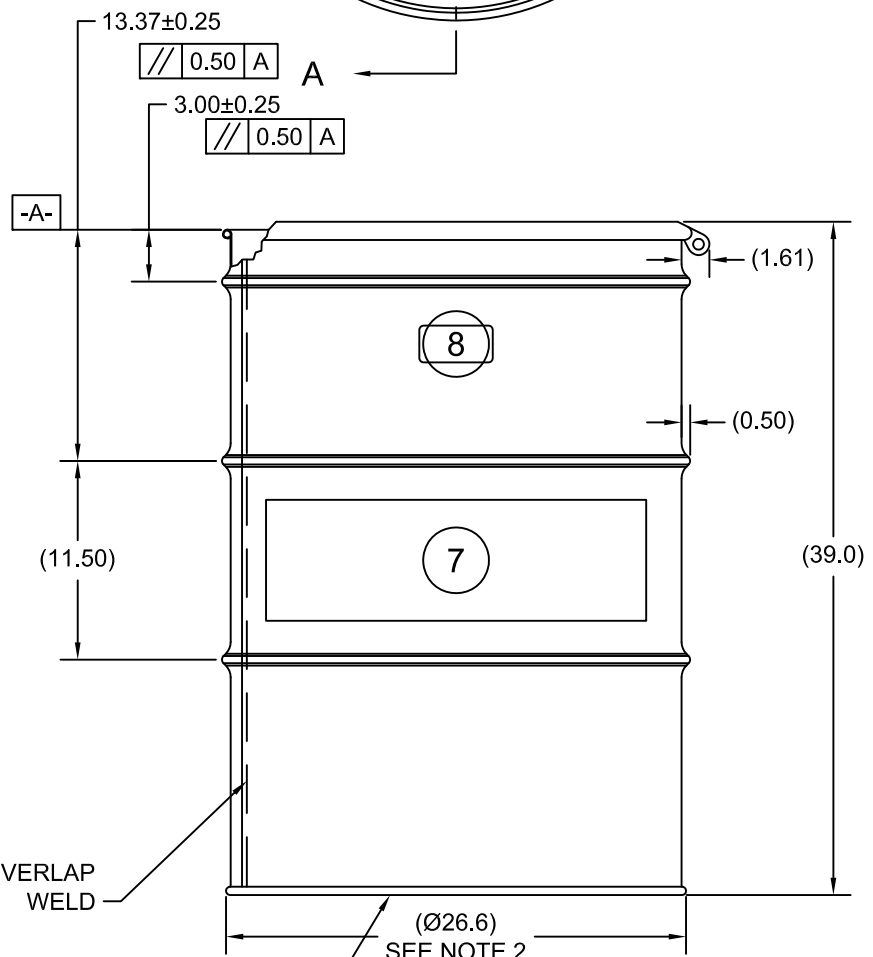
1. THESE DIMENSIONS REPRESENT DRUM AFTER BEING PROPERLY ASSEMBLED AND CLOSED PER SKOLNIK CLOSING INSTRUCTIONS
2. TO DETERMINE GREATER ACCURACY OF ANY DIAMETRIC DIMENSION, MEASURING OF CIRCUMFERENCE IS REQUIRED
3. CONSTRUCTION per 49 CFR §178.504 (b)

**MATERIAL:**

1. DRUM BODY AND COVER CRCQ CARBON STEEL PER ASTM A1008 AND ASTM A568
2. MATERIAL THICKNESS 1.0mm (0.0380 - 0.0420; 19 GAUGE).
3. GASKET MAT'L PER ASTM D1056

**FINISH:**

1. BODY/BOTTOM EXTERIOR PAINTED YELLOW (LQ10024)  
COVER EXTERIOR PAINTED RED (LQ10017)



UN NUMBER EMBOSSED ON BOTTOM OF DRUM  
1/2" CHARACTERS

UN/1A2/X440/S/YR

1.0 \*

(YR = YEAR OF MANUFACTURE)

TARE WEIGHT:  
60 lbs

THE USE OF INFORMATION CONTAINED HEREIN IS RESTRICTED FOR THE BENEFIT OF SKOLNIK INDUSTRIES ONLY. UNAUTHORIZED USE OR DISCLOSURE, COPYING OR OTHERWISE REPRODUCING (IN ANY MANNER) ANY PORTION OF THIS DRAWING WITHOUT PRIOR WRITTEN PERMISSION OF AN AUTHORIZED OFFICIAL OF SKOLNIK INDUSTRIES IS STRICTLY PROHIBITED.

**APPROVAL ON FILE**

FILE CREATED IN  
AutoCAD

**UNLESS STATED OTHERWISE**

(DIMENSIONS IN PARENTHESIS ARE FOR REFERENCE ONLY!!!)

ALL DIMENSIONS ARE IN INCHES  
DO NOT SCALE DRAWING

TOLERANCES:

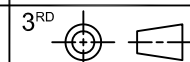
FRACTIONS ±1/4

X° ± 3°

X.X ± 0.2

X.XX ± 0.10

X.XXX ± 0.030



**SKOLNIK INDUSTRIES, INC.**  
4900 SOUTH KILBOURN AVENUE, CHICAGO, IL 60632

DESCRIPTION  
85 GALLON OPEN HEAD DRUM  
1.0 - 1.0 - 1.0 CRCQ STEEL  
1A2/X440/S

REL. DATE  
19-MAR-2012

PART NUM. / FILENAME  
HM8519

REV  
A3