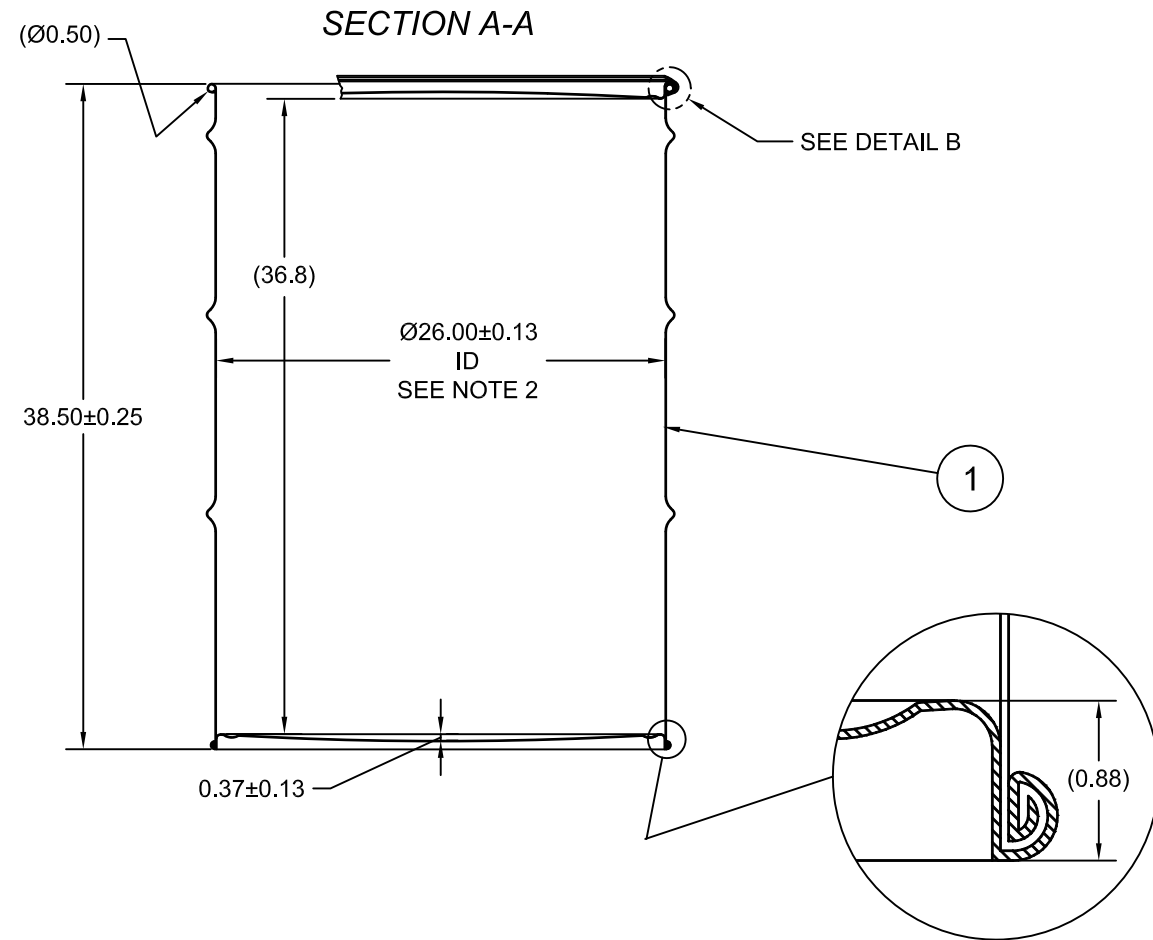
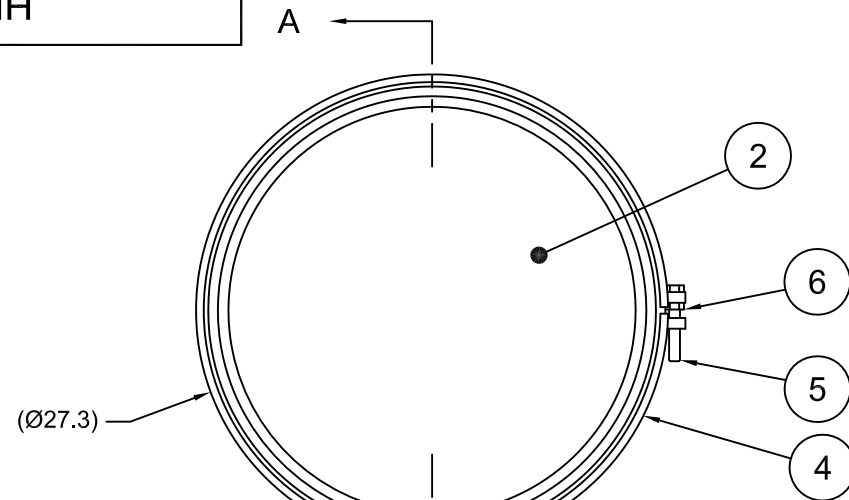


0Z58WH

ECN # or INIT	REV	DESCRIPTION	DATE
	A	RELEASED	30-MAR-2007
OE-001	A1	CLERICAL ERROR	12-APR-2013
OE-001	A2	CLERICAL ERROR	15-APR-2013
OE-018	A3	WAS MULTI-LINGUAL SALVAGE LOGO	21-OCT-2016



NOTES:

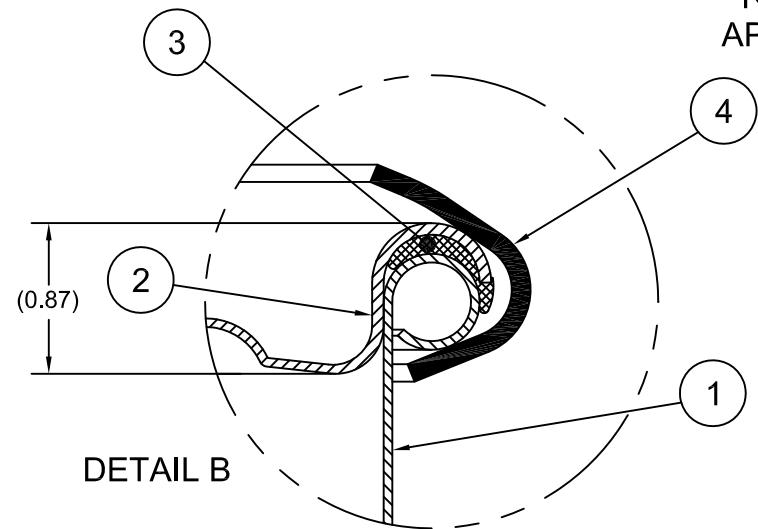
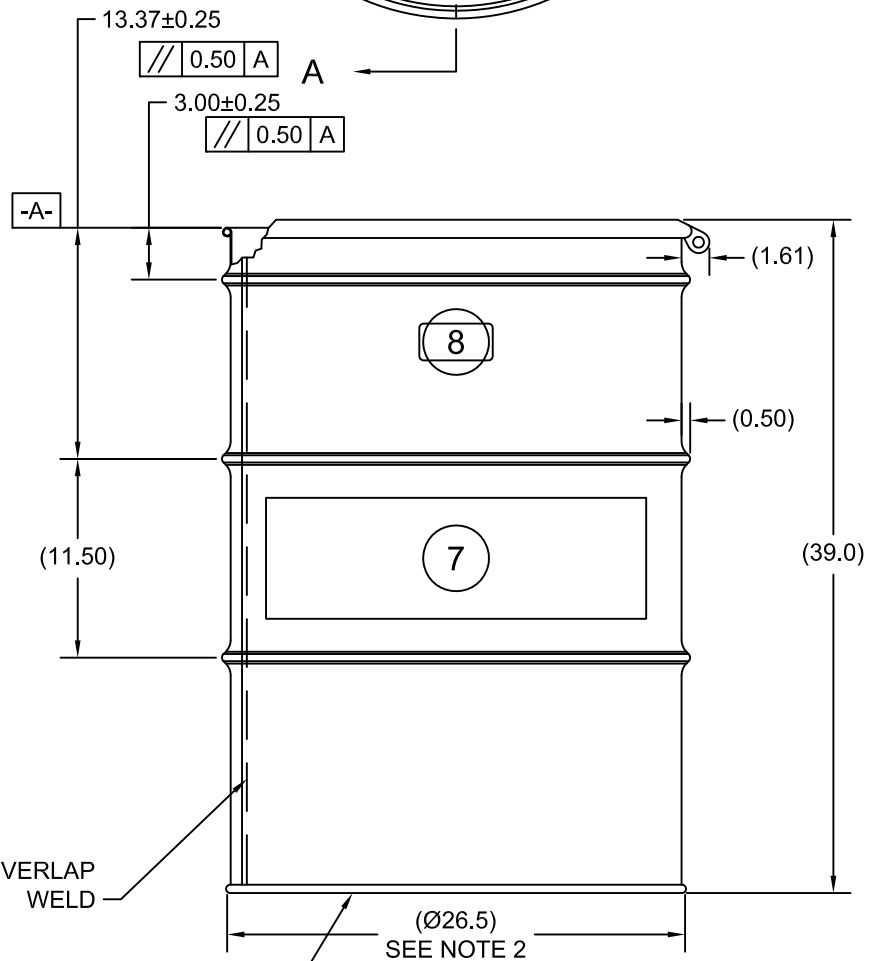
1. THESE DIMENSIONS REPRESENT DRUM AFTER BEING PROPERLY ASSEMBLED AND CLOSED PER SKOLNIK CLOSING INSTRUCTIONS
2. TO DETERMINE GREATER ACCURACY OF ANY DIAMETRIC DIMENSION, MEASURING OF CIRCUMFERENCE IS REQUIRED
3. CONSTRUCTION per 49 CFR §178.504 (b)

MATERIAL:

1. DRUM BODY AND COVER CRCQ CARBON STEEL PER ASTM A1008 AND ASTM A568
2. MATERIAL THICKNESS COVER 1.2mm (0.0433 - 0.0480; 18 GAUGE), BODY/BOTTOM 0.9mm (0.0319 - 0.0370; 20 GAUGE).
3. GASKET MAT'L PER ASTM D1056

FINISH:

1. BODY/BOTTOM EXTERIOR PAINTED GRAY #716 (LQ10011)
COVER EXTERIOR PAINTED RED (LQ10017)



UN NUMBER EMBOSSED ON BOTTOM OF DRUM
1/2" CHARACTERS

UN/1A2/Y440/S/YR

1.2 - 0.9 - 0.9 *

(YR = YEAR OF MANUFACTURE)

TARE WEIGHT:
50 lbs

UNLESS STATED OTHERWISE

(DIMENSIONS IN PARENTHESIS ARE FOR REFERENCE ONLY!!!)

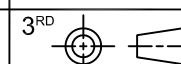
ALL DIMENSIONS ARE IN INCHES
DO NOT SCALE DRAWING

TOLERANCES:

FRACTIONS ±1/4
X° ± 3°
X.X ± 0.2
X.XX ± 0.10
X.XXX ± 0.030

**APPROVAL
ON FILE**

FILE CREATED IN
AutoCAD



SKOLNIK INDUSTRIES, INC.
4900 SOUTH KILBOURN AVENUE, CHICAGO, IL 60632

DESCRIPTION
85 GALLON OPEN HEAD DRUM
1.2 - 0.9 - 0.9 CRCQ STEEL
1A2/Y440/S SOLIDS ONLY

REL. DATE
30-MAR-2007

PART NUM. / FILENAME
HM8520

REV
A3

THE USE OF INFORMATION CONTAINED HEREIN IS RESTRICTED FOR THE BENEFIT OF SKOLNIK INDUSTRIES ONLY. UNAUTHORIZED USE OR DISCLOSURE, COPYING OR OTHERWISE REPRODUCING (IN ANY MANNER) ANY PORTION OF THIS DRAWING WITHOUT PRIOR WRITTEN PERMISSION OF AN AUTHORIZED OFFICIAL OF SKOLNIK INDUSTRIES IS STRICTLY PROHIBITED.