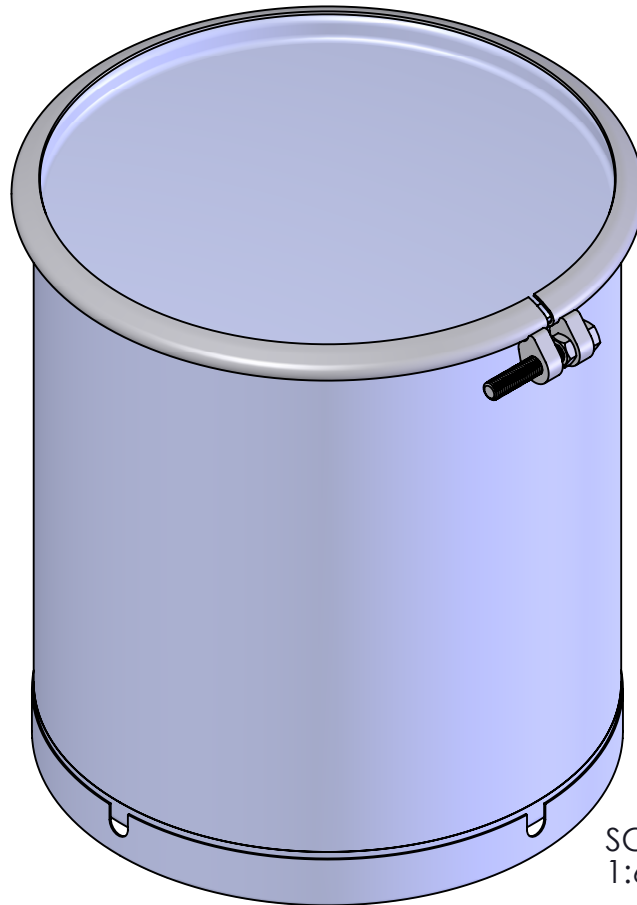
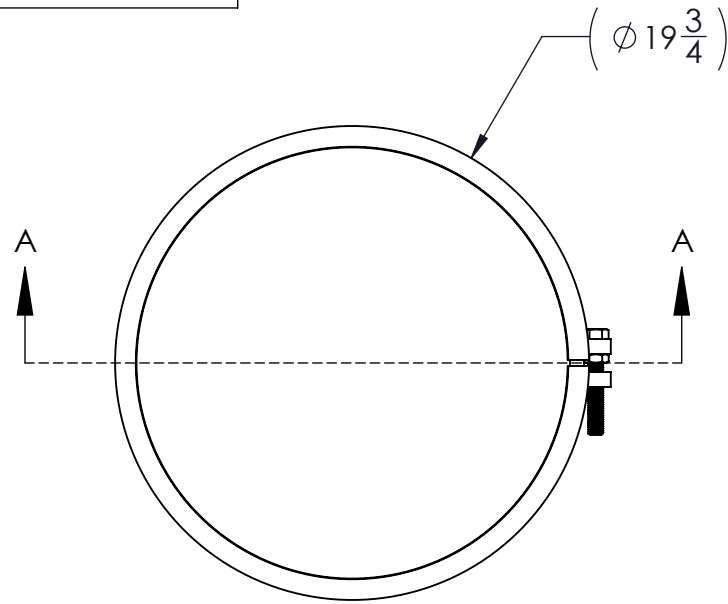
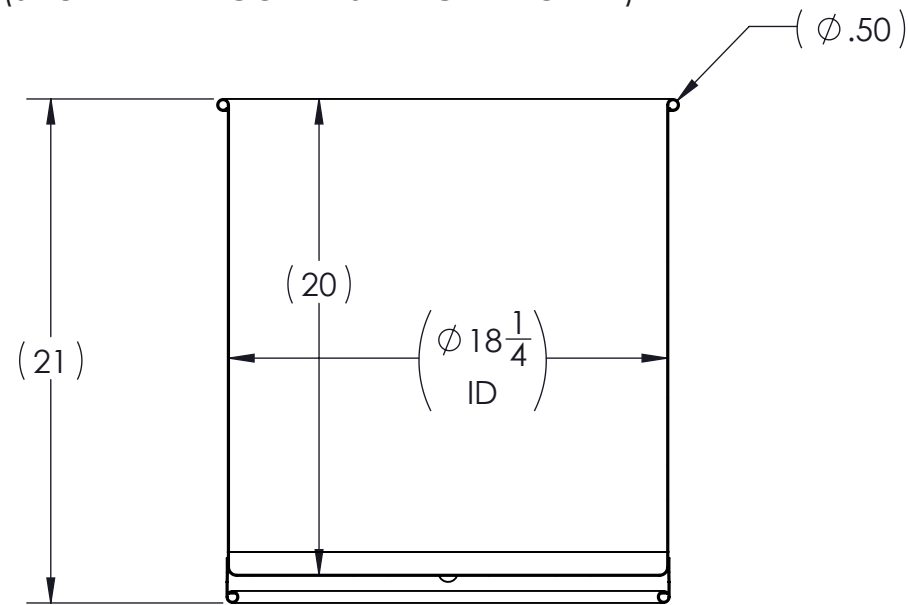


IP20TO-CR

ECN # or INIT	REV	DESCRIPTION	DATE
OE-005	A1	REDRAWN TO CAD	12-MAY-2017
OE-001	A2	CORRECTED TARE WEIGHT	25-MAY-2017
OE-001	A3	CORRECTED TITLE BLOCK	05-JUL-2017



SECTION A-A  
(SHOWN WITH COVER & RING REMOVED)



**NOTES:**

1. TO DETERMINE GREATER ACCURACY OF ANY DIAMETRIC DIMENSION, MEASURING OF CIRCUMFERENCE IS REQUIRED

**MATERIAL:**

1. DRUM BODY AND COVER STAINLESS STEEL
2. MATERIAL THICKNESS 16GA
3. GASKET MAT'L PER ASTM D1056

**FINISH:**

1. NONE

6	GE2001	$\phi 7/16$ ROUND EPDM WHITE	1
5	NT5800	5/8-11UNC HEX JAM NUT	1
4	BT5840	5/8-11UNC X 4in LONG HEX HEAD BOLT	1
3	RBH1812	BOLT RING (HP) 20-30G 12 GA	1
2	P1815S	COVER FOR $\phi 18.25$ SEAMLESS	1
1	IP20TO	BODY/BOTTOM $\phi 18.25$ SEAMLESS	1
ITEM NO.	PART NUMBER	DESCRIPTION	QTY.

**UNLESS STATED OTHERWISE**  
(DIMENSIONS IN PARENTHESIS ARE FOR REFERENCE ONLY!!!)

ALL DIMENSIONS ARE IN INCHES  
DO NOT SCALE DRAWING (SCALE = 1:8)  
TOLERANCES:  
FRACTIONS  $\pm 1/4$

**SKOLNIK INDUSTRIES, INC.**  
4900 SOUTH KILBOURN AVENUE, CHICAGO, IL 60632

DESCRIPTION  
20 GALLON OPEN HEAD DRUM  
A3  
STAINLESS STEEL

REL. DATE	PART NUM. / FILENAME	REV
-	IP20TO-CR	A3

TARE WEIGHT:  
37 lbs

THE USE OF INFORMATION CONTAINED HEREIN IS RESTRICTED FOR THE BENEFIT OF SKOLNIK INDUSTRIES ONLY. UNAUTHORIZED USE OR DISCLOSURE, COPYING OR OTHERWISE REPRODUCING (IN ANY MANNER) ANY PORTION OF THIS DRAWING WITHOUT PRIOR WRITTEN PERMISSION OF AN AUTHORIZED OFFICIAL OF SKOLNIK INDUSTRIES IS STRICTLY PROHIBITED.

**APPROVAL ON FILE**

FILE CREATED IN  
SolidWorks



BEST PRINTED ON B-SIZE PAPER