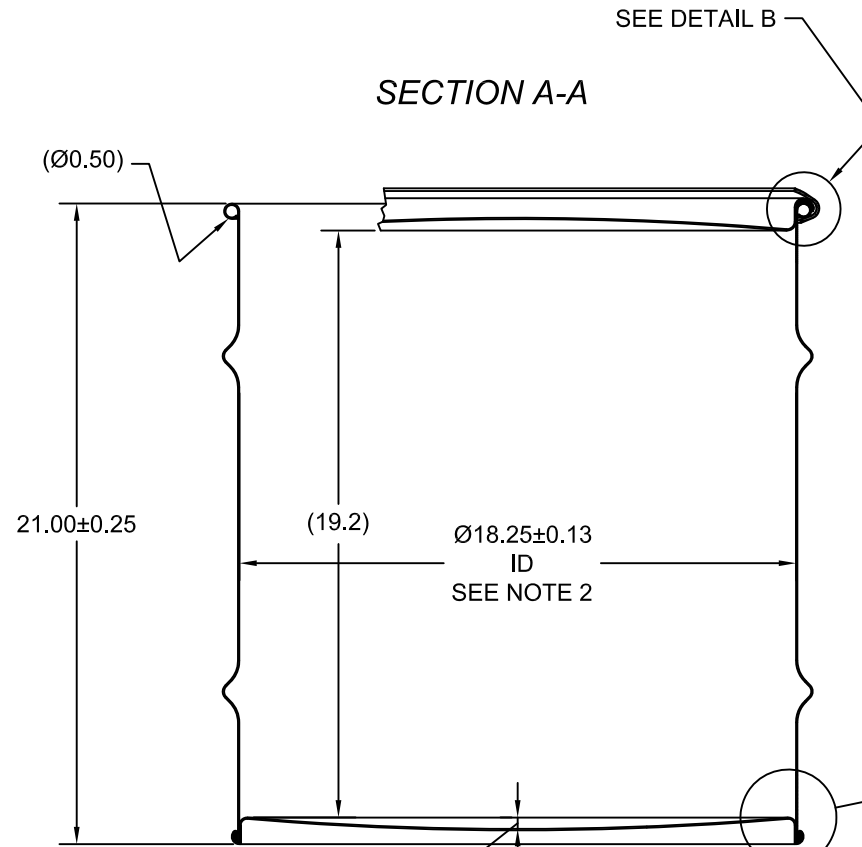
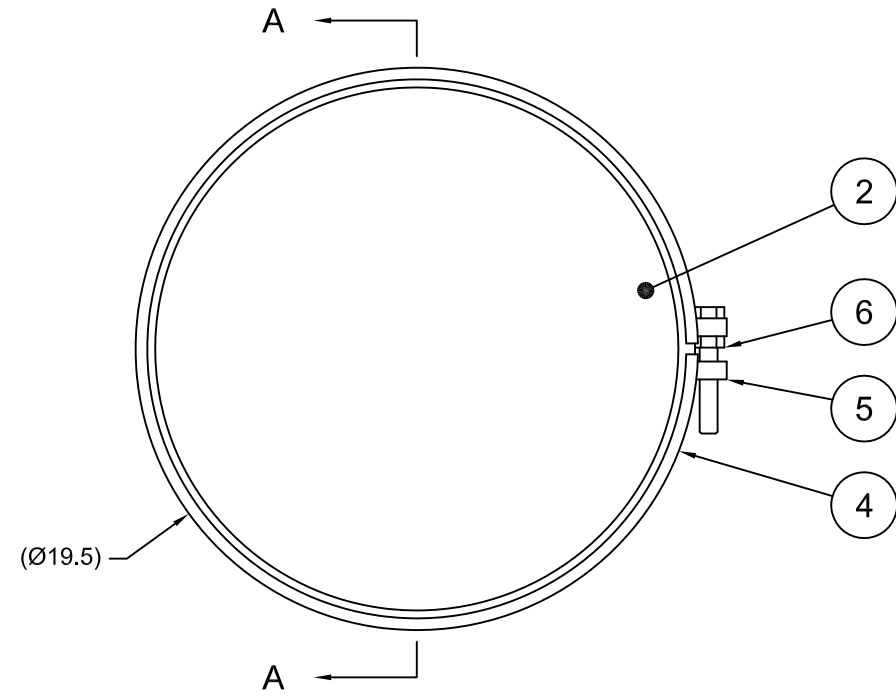


PH2001

ECN # or INIT	REV	DESCRIPTION	DATE
OE-005	A1	REDRAWN TO AutoCAD	29-MAR-2012
		CORRECTED EMBOSMENT &	
OE-001	A2	REMOVED LINING NOTE & CORRECTED COLOR	06-SEP-2012
OE-001	A3	ADDED CHIME PROFILE	24-APR-2013



**NOTES:**

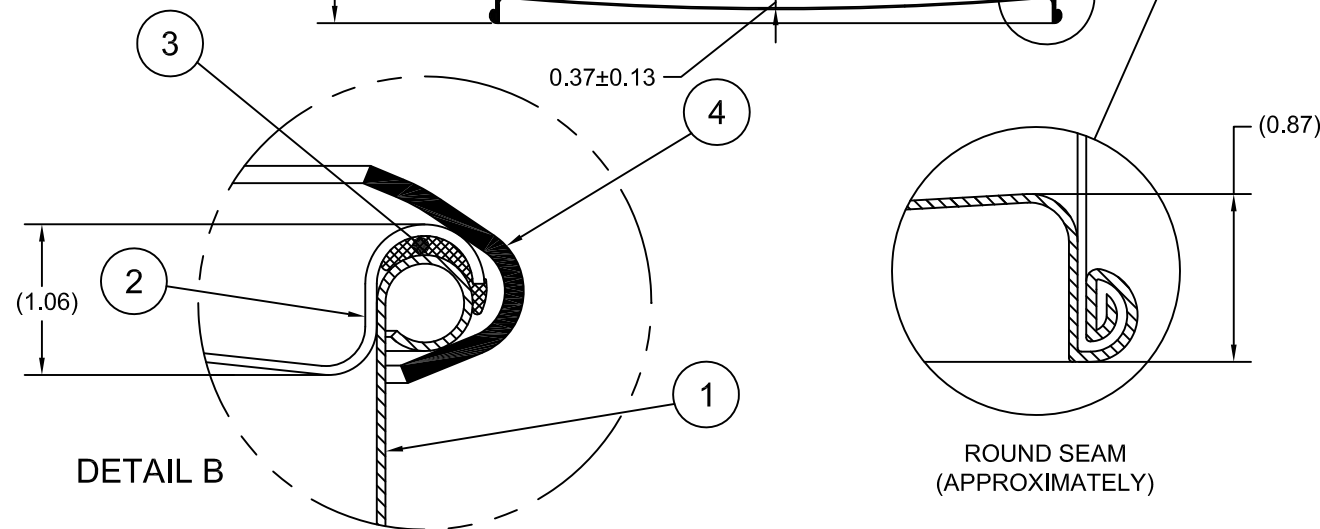
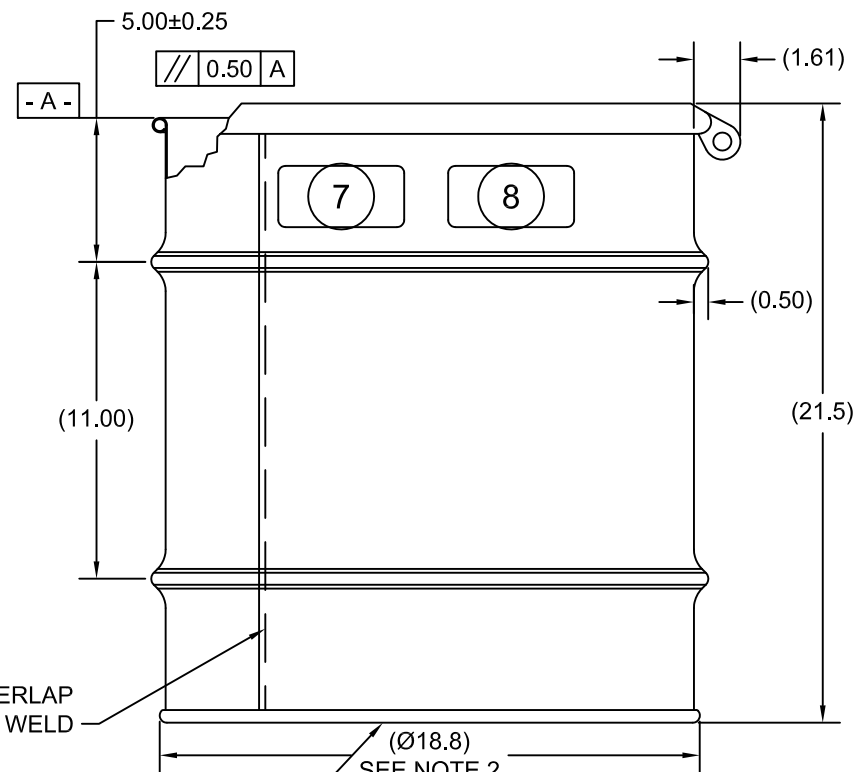
1. THIS DIMENSION REPRESENTS DRUM AFTER BEING PROPERLY ASSEMBLED AND CLOSED PER SKOLNIK CLOSING INSTRUCTIONS
2. TO DETERMINE GREATER ACCURACY OF ANY DIAMETRIC DIMENSION, MEASURING OF CIRCUMFERENCE IS REQUIRED
3. CONSTRUCTION per 49 CFR §178.504 (b)

**MATERIAL:**

1. CRCQ CARBON STEEL PER ASTM A1008 AND ASTM A568 OR EQUIVALENT
2. MATERIAL THICKNESS: 1.5mm (0.0543 - 0.0590; 16 GAUGE)
3. GASKET MAT'L PER ASTM D1056

**FINISH:**

1. DRUM EXTERIOR PAINTED BLACK (LQ10003)
- COVER EXTERIOR PAINTED RED (LQ10017)



ITEM	ITEM	DESCRIPTION	QTY
8		UN DURABLE LABEL	1
7		DURABLE LABEL, "+ 15 PSI"	1
6	NT5800	5/8-11UNC HEX JAM NUT	1
5	BT5840	5/8-11UNC X 4in LONG HEX HEAD BOLT	1
4	RBH1812	BOLT RING (HP) 20-30G 12GA 5/8 LUG	1
3	GE2000	GASKET IN-COVER D EPDM	1
2	P1815	COVER, Ø18.25 ID CRCQ STEEL	1
1		20 GALLON DRUM BODY AND BOTTOM	1

BEST PRINTED ON B-SIZE PAPER

UN/1A2/X195/S/YR  
UN/1A2/Y1.5/200/YR  
1.5 \*  
(YR = YEAR OF MANUFACTURE)

TARE WEIGHT:  
34 lbs

THE USE OF INFORMATION CONTAINED HEREIN IS RESTRICTED FOR THE BENEFIT OF SKOLNIK INDUSTRIES ONLY. UNAUTHORIZED USE OR DISCLOSURE, COPYING OR OTHERWISE REPRODUCING (IN ANY MANNER) ANY PORTION OF THIS DRAWING WITHOUT PRIOR WRITTEN PERMISSION OF AN AUTHORIZED OFFICIAL OF SKOLNIK INDUSTRIES IS STRICTLY PROHIBITED.

MFG BR	DRW LJT	CHK JG
SLS DR	QA MD	
APR G. Petersen		
FILE CREATED IN AutoCAD 2002	3 <sup>RD</sup>	

**UNLESS STATED OTHERWISE**  
(DIMENSIONS IN PARENTHESIS ARE FOR REFERENCE ONLY!!!)  
ALL DIMENSIONS ARE IN INCHES  
DO NOT SCALE DRAWING  
TOLERANCES:  
FRACTIONS ±1/4  
X° ± 3°  
X.X ± 0.2  
X.XX ± 0.10  
X.XXX ± 0.030

<b>SKOLNIK INDUSTRIES, INC.</b> 4900 SOUTH KILBOURN AVENUE, CHICAGO, IL 60632		
DESCRIPTION 20 GALLON OPEN HEAD DRUM 1.5 - 1.5 - 1.5 CRCQ 1A2/X195/S & 1A2/Y1.5/200		
REL. DATE 29-MAR-2012	PART NUM./FILENAME PH2001	REV A3