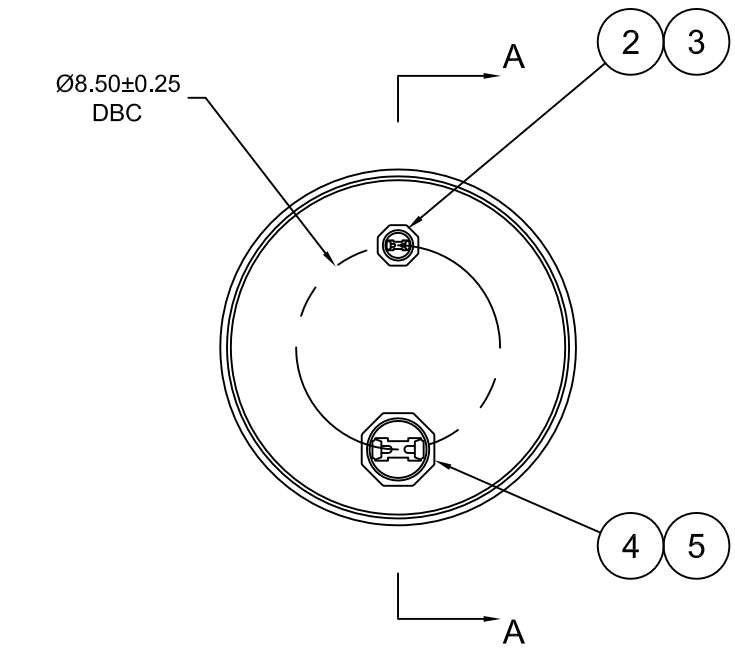
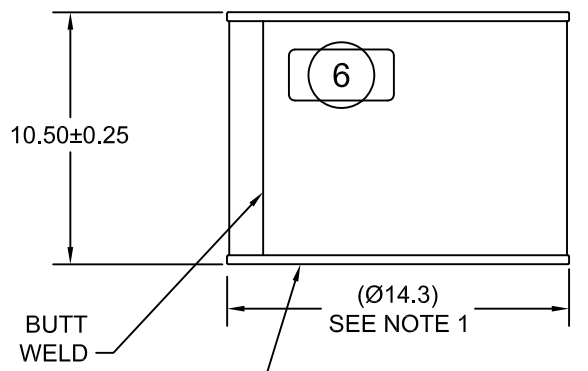
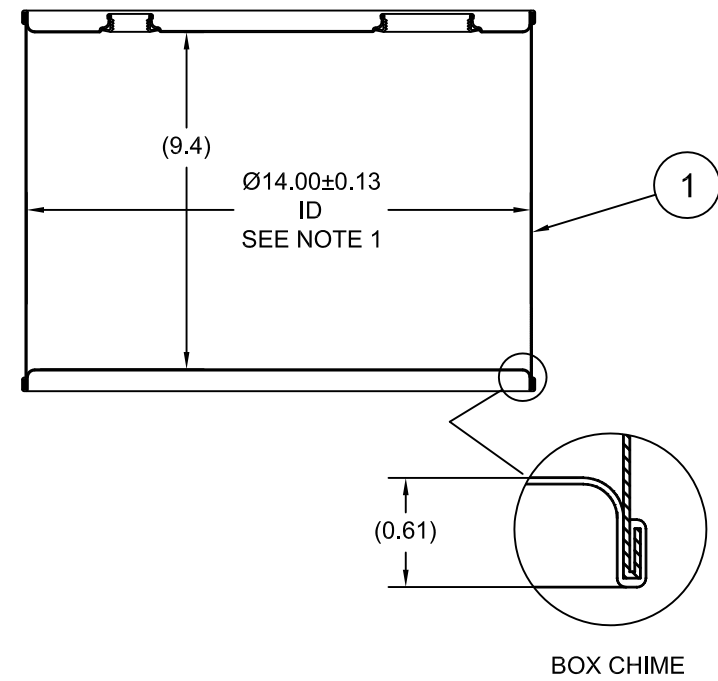


ST0503

ECN #	REV	DESCRIPTION	DATE
OE-005	A1	REDRAWN TO AutoCAD	25-FEB-2013
OE-001	A2	CLERICAL ERROR	15-APR-2013



SECTION A-A
(SHOWN W/ PLUGS REMOVED)



UN NUMBER EMBOSSED ON BOTTOM OF DRUM
1/2" CHARACTERS READING:
UN/1A1/X1.6/250/YR
0.9 * 304
(YR = YEAR OF MANUFACTURE)

NOTES:

- TO DETERMINE GREATER ACCURACY OF ANY DIAMETRIC DIMENSION, MEASURING OF CIRCUMFERENCE IS REQUIRED
- CONSTRUCTION per 49 CFR §178.504 (b)

MATERIAL:

- 304SS PER ASTM A240 OR EQUIVALENT
- MATERIAL THICKNESS: 0.9mm (0.0319 - 0.0370; 20 GAUGE)

FINISH:

- PASSIVATED INNER AND OUTER SURFACE OF WELDS

ITEM	P/N	DESCRIPTION	QTY
6		UN DURABLE LABEL	1
5	PT2050	PLUG 2 TS 316SS BUNA GASKET	1
4	FT2050	FLANGE 2 TS 316SS BUNA GASKET	1
3	PT3050	PLUG 3/4 TS 316SS BUNA GASKET	1
2	FT3050	FLANGE 3/4 TS 316SS BUNA GASKET	1
1		5 GALLON TIGHT HEAD DRUM	1

<p>THE USE OF INFORMATION CONTAINED HEREIN IS RESTRICTED FOR THE BENEFIT OF SKOLNIK INDUSTRIES ONLY. UNAUTHORIZED USE OR DISCLOSURE, COPYING OR OTHERWISE REPRODUCING (IN ANY MANNER) ANY PORTION OF THIS DRAWING WITHOUT PRIOR WRITTEN PERMISSION OF AN AUTHORIZED OFFICIAL OF SKOLNIK INDUSTRIES IS STRICTLY PROHIBITED.</p>	<p>MFG BR</p>	<p>DRW LJT</p>	<p>CHK JG</p>	<p>UNLESS STATED OTHERWISE (DIMENSIONS IN PARENTHESIS ARE FOR REFERENCE ONLY!!!) ALL DIMENSIONS ARE IN INCHES DO NOT SCALE DRAWING TOLERANCES: FRACTIONS ±1/4 X° ± 3° X.X ± 0.2 X.XX ± 0.10 X.XXX ± 0.030</p>	<p>SKOLNIK INDUSTRIES, INC. 4900 SOUTH KILBOURN AVENUE, CHICAGO, IL 60632</p>	
	<p>SLS DR</p>	<p>QA MD</p>	<p>APR G. Petersen</p>			<p>FILE CREATED IN AutoCAD 2002</p>
<p>TARE WEIGHT: 10 lbs</p>		<p>BEST PRINTED ON B-SIZE PAPER</p>		<p>REL. DATE -</p>	<p>PART NUM. / FILENAME ST0503</p>	<p>REV A2</p>