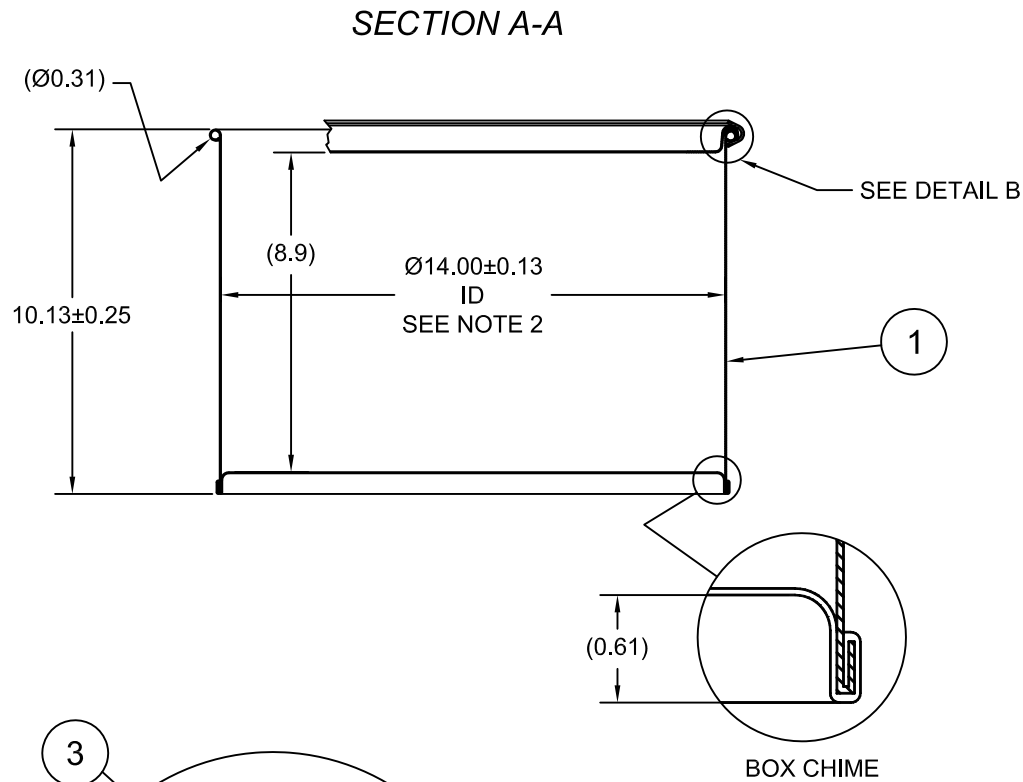
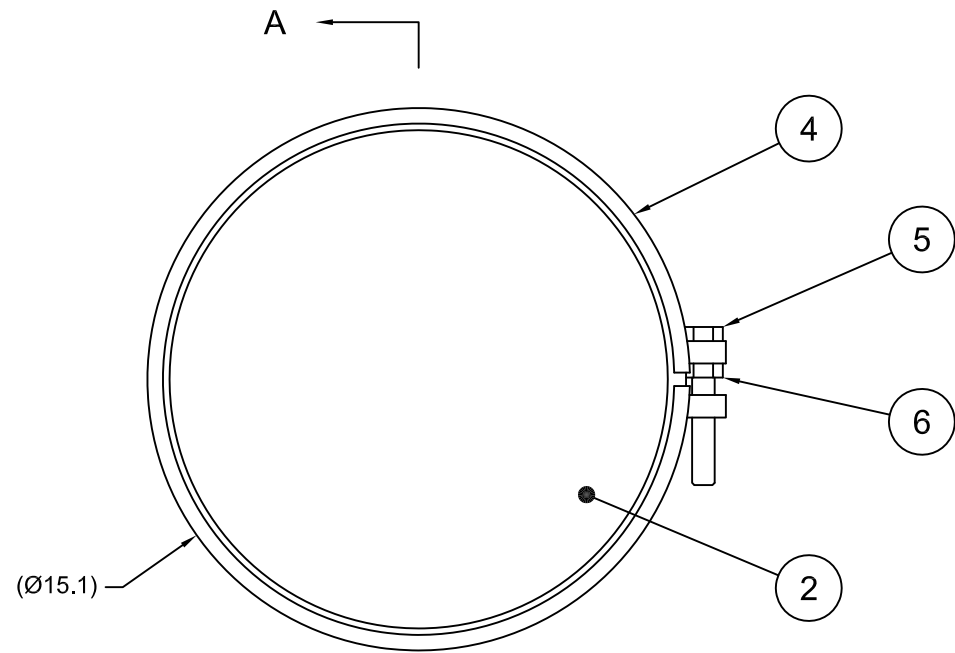


ST0504

ECN # or INIT	REV	DESCRIPTION	DATE
OE-005	A1	DRAWN IN AutoCAD	03-AUG-2009
OE-001	A2	CLERICAL ERROR	04-AUG-2009
OE-001	A3	CLERICAL ERROR	15-APR-2013



**NOTES:**

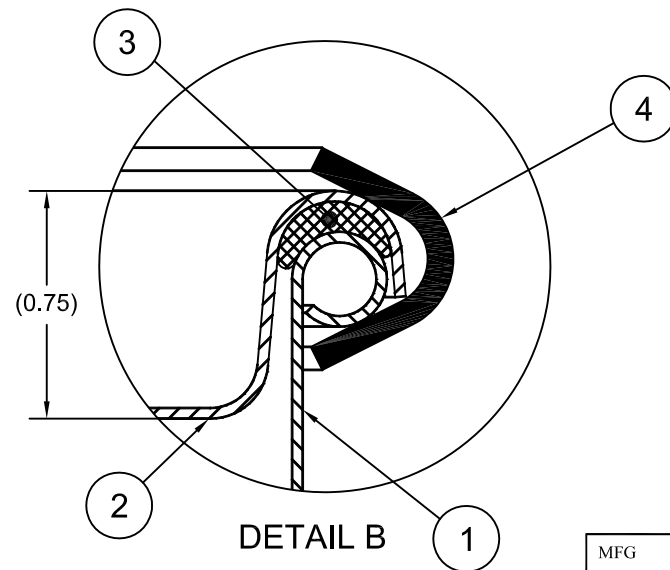
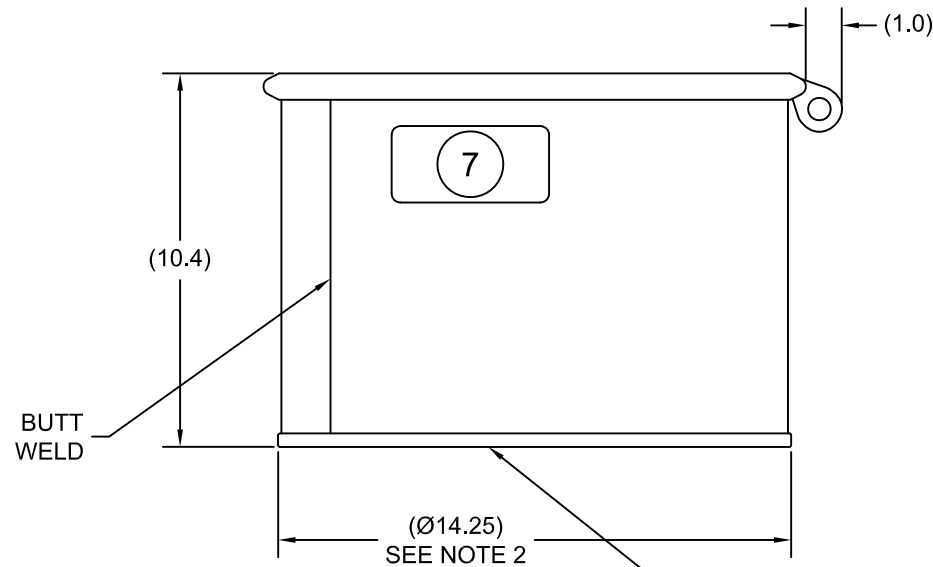
1. THIS DIMENSION REPRESENTS DRUM AFTER BEING PROPERLY ASSEMBLED AND CLOSED PER SKOLNIK CLOSING INSTRUCTIONS
2. TO DETERMINE GREATER ACCURACY OF ANY DIAMETRIC DIMENSION, MEASURING OF CIRCUMFERENCE IS REQUIRED
3. CONSTRUCTION per 49 CFR §178.504 (b)

**MATERIAL:**

1. 304SS PER ASTM A240 OR EQUIVALENT
2. MATERIAL THICKNESS: DRUM 0.9mm (0.0319 - 0.0370, 20 GAUGE)
3. GASKET MAT'L PER ASTM D1056
4. BOLT RING CARBON STEEL

**FINISH:**

1. PASSIVATED INNER AND OUTER SURFACE OF BODY WELD SEAM



ITEM	P/N	DESCRIPTION	QTY
7		UN DURABLE LABEL	1
6	NT5800	5/8-11UNC HEX JAM NUT	1
5	BT5840	5/8-11UNC X 4in LONG HEX HEAD BOLT	1
4	RBH1413	BOLT RING (MOD A) 5-16G 13GA 5/8 LUG	1
3	GE0503-01	GASKET 3/8 DIA RD EPDM	1
2	P1409S	COVER 14 ID	1
1		BODY/BOTTOM 5 GALLON DRUM 14 ID	1

UN NUMBER EMBOSSED ON BOTTOM OF DRUM  
 ½" CHARACTERS READING:  
 UN/1A2/X60/S/YR  
 UN/1A2/Y1.5/150/YR  
 0.9 \* 304

TARE WEIGHT:  
 10 lbs

(YR = YEAR OF MANUFACTURE)

THE USE OF INFORMATION CONTAINED HEREIN IS RESTRICTED FOR THE BENEFIT OF SKOLNIK INDUSTRIES ONLY. UNAUTHORIZED USE OR DISCLOSURE, COPYING OR OTHERWISE REPRODUCING (IN ANY MANNER) ANY PORTION OF THIS DRAWING WITHOUT PRIOR WRITTEN PERMISSION OF AN AUTHORIZED OFFICIAL OF SKOLNIK INDUSTRIES IS STRICTLY PROHIBITED.

MFG JR	DRW LJT	CHK MAR
SLS DR	QA MD	
APR G. Petersen		
FILE CREATED IN AutoCAD 2002		

**UNLESS STATED OTHERWISE**  
 (DIMENSIONS IN PARENTHESIS ARE FOR REFERENCE ONLY!!!)  
 ALL DIMENSIONS ARE IN INCHES  
 DO NOT SCALE DRAWING  
 TOLERANCES:  
 FRACTIONS ±1/4  
 X° ± 3°  
 X.X ± 0.2  
 X.XX ± 0.10  
 X.XXX ± 0.030

**SKOLNIK INDUSTRIES, INC.**  
 4900 SOUTH KILBOURN AVENUE, CHICAGO, IL 60632

DESCRIPTION  
 5 GALLON OPEN HEAD DRUM  
 0.9 - 0.9 - 0.9 304SS  
 1A2/X60/S & 1A2/Y1.5/150

REL. DATE 03-AUG-2009	PART NUM. / FILENAME ST0504	REV A3
--------------------------	--------------------------------	-----------