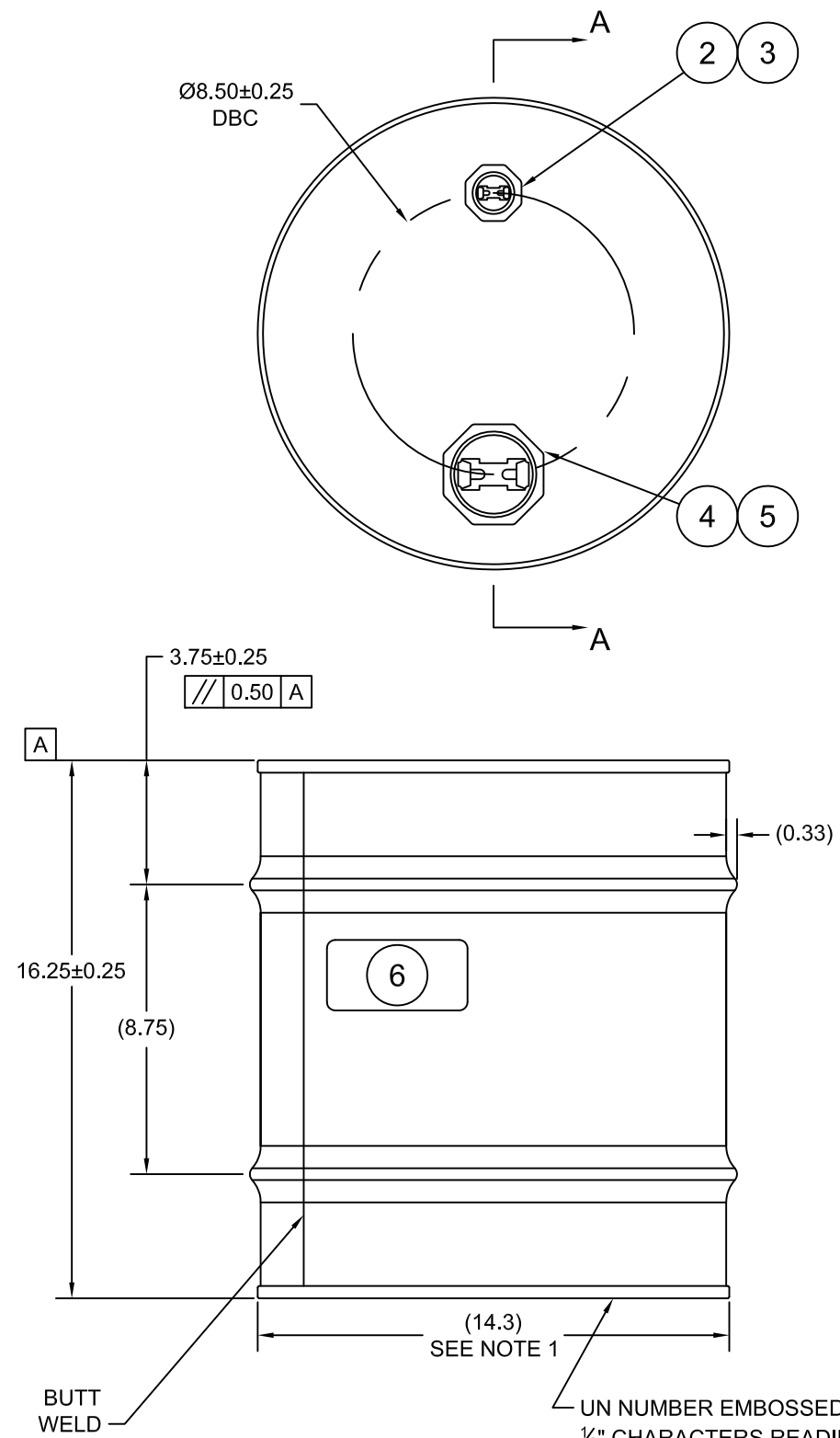
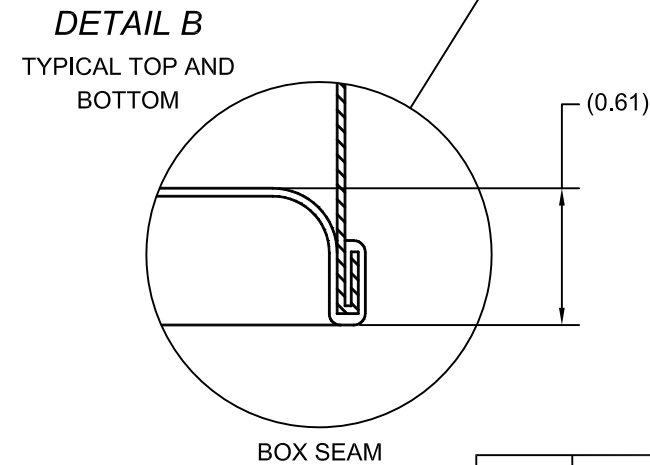
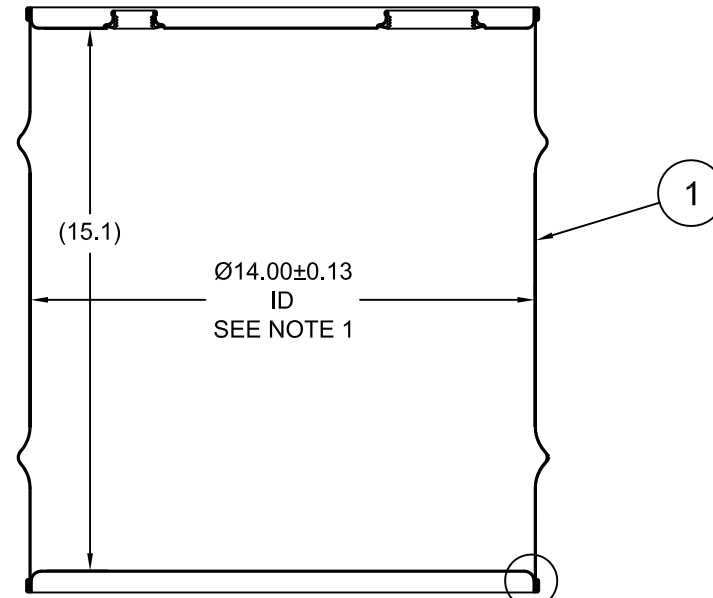


ST0803

ECN # or INIT	REV	DESCRIPTION	DATE
	A	RELEASE	23-NOV-2004
OE-001	A1	CLERICAL ERROR	04-DEC-2009
OE-001	A2	CLERICAL ERROR	15-APR-2013
OE-013	A3	REVISED HOOP PROFILE	22-APR-2013



SECTION A-A
(SHOWN W/ PLUGS REMOVED)



NOTES:

- TO DETERMINE GREATER ACCURACY OF ANY DIAMETRIC DIMENSION, MEASURING OF CIRCUMFERENCE IS REQUIRED
- CONSTRUCTION per 49 CFR § 178.504 (b)

MATERIAL:

- 304SS PER ASTM A240 OR EQUIVALENT
- MATERIAL THICKNESS: DRUM 0.9mm (0.0319 - 0.0370, 20 GAUGE)

FINISH:

- PASSIVATED INNER AND OUTER SURFACE OF BODY WELD SEAM

ITEM	P/N	DESCRIPTION	QTY
6		UN DURABLE LABEL	1
5	PT2050	PLUG 2 TS 316SS BUNA GASKET	1
4	FT2050	FLANGE 2 TS 316SS BUNA GASKET	1
3	PT3050	PLUG 3/4 TS 316SS BUNA GASKET	1
2	FT3050	FLANGE 3/4 TS 316SS BUNA GASKET	1
1		8 GALLON TIGHT HEAD DRUM	1

BUTT WELD

UN NUMBER EMBOSSED ON BOTTOM OF DRUM
1/2" CHARACTERS READING:
UN/1A1/X1.4/250/YR
0.9 * 304
(YR = YEAR OF MANUFACTURE)

TARE WEIGHT:
13 lbs

THE USE OF INFORMATION CONTAINED HEREIN IS RESTRICTED FOR THE BENEFIT OF SKOLNIK INDUSTRIES ONLY. UNAUTHORIZED USE OR DISCLOSURE, COPYING OR OTHERWISE REPRODUCING (IN ANY MANNER) ANY PORTION OF THIS DRAWING WITHOUT PRIOR WRITTEN PERMISSION OF AN AUTHORIZED OFFICIAL OF SKOLNIK INDUSTRIES IS STRICTLY PROHIBITED.

DRW CA	CHK CA
SLS JS	QA JM
APR Juan Chapa	
FILE CREATED IN AutoCAD 2002	

UNLESS STATED OTHERWISE
(DIMENSIONS IN PARENTHESIS ARE FOR REFERENCE ONLY!!!)
ALL DIMENSIONS ARE IN INCHES
DO NOT SCALE DRAWING
TOLERANCES:
FRACTIONS ±1/4
X° ± 3°
X.X ± 0.2
X.XX ± 0.10
X.XXX ± 0.030

SKOLNIK INDUSTRIES, INC.
4900 SOUTH KILBOURN AVENUE, CHICAGO, IL 60632

DESCRIPTION
8 GALLON TIGHT HEAD DRUM
0.9 - 0.9 - 0.9 304SS
1A1/X1.4/250

REL. DATE 23-NOV-2004	PART NUM. / FILENAME ST0803	REV A3
--------------------------	--------------------------------	-----------