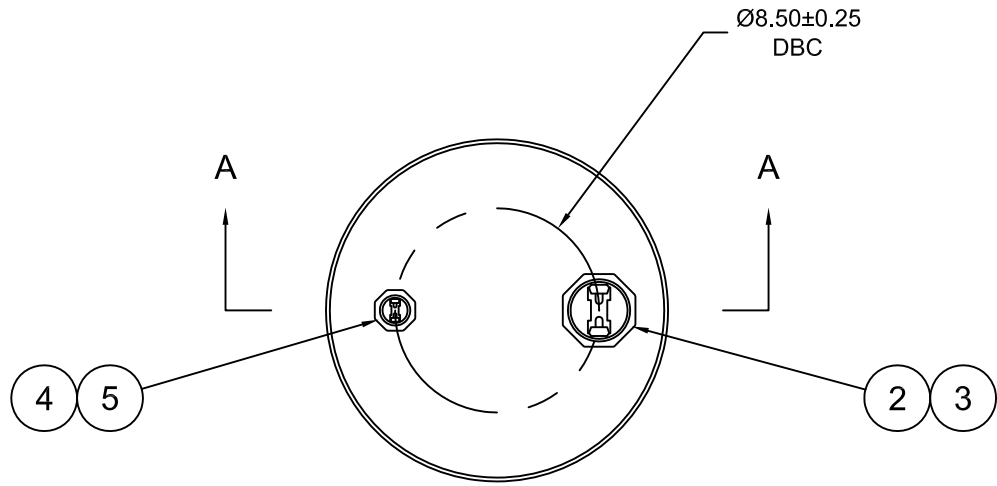
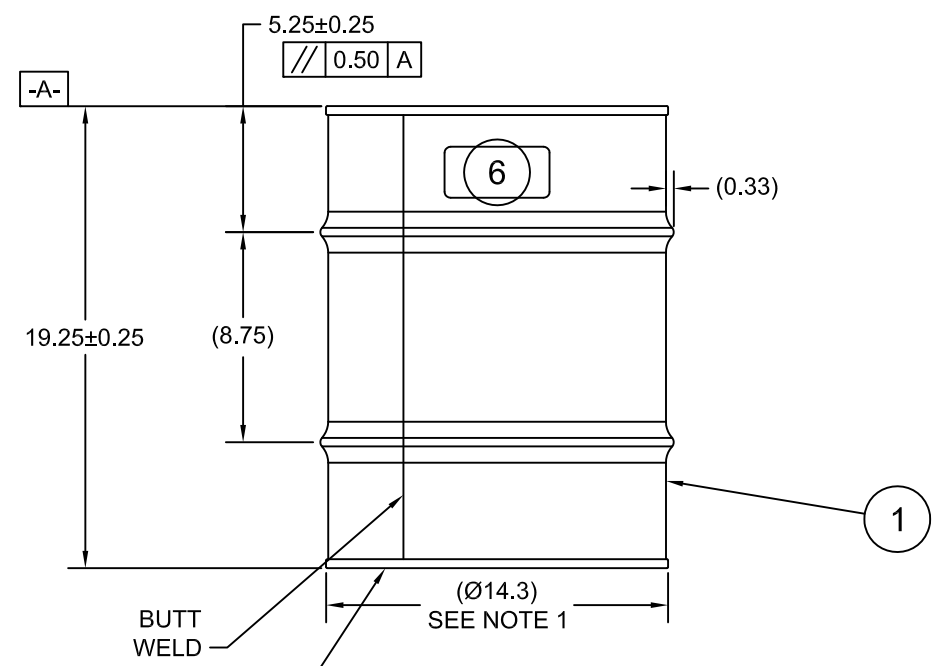
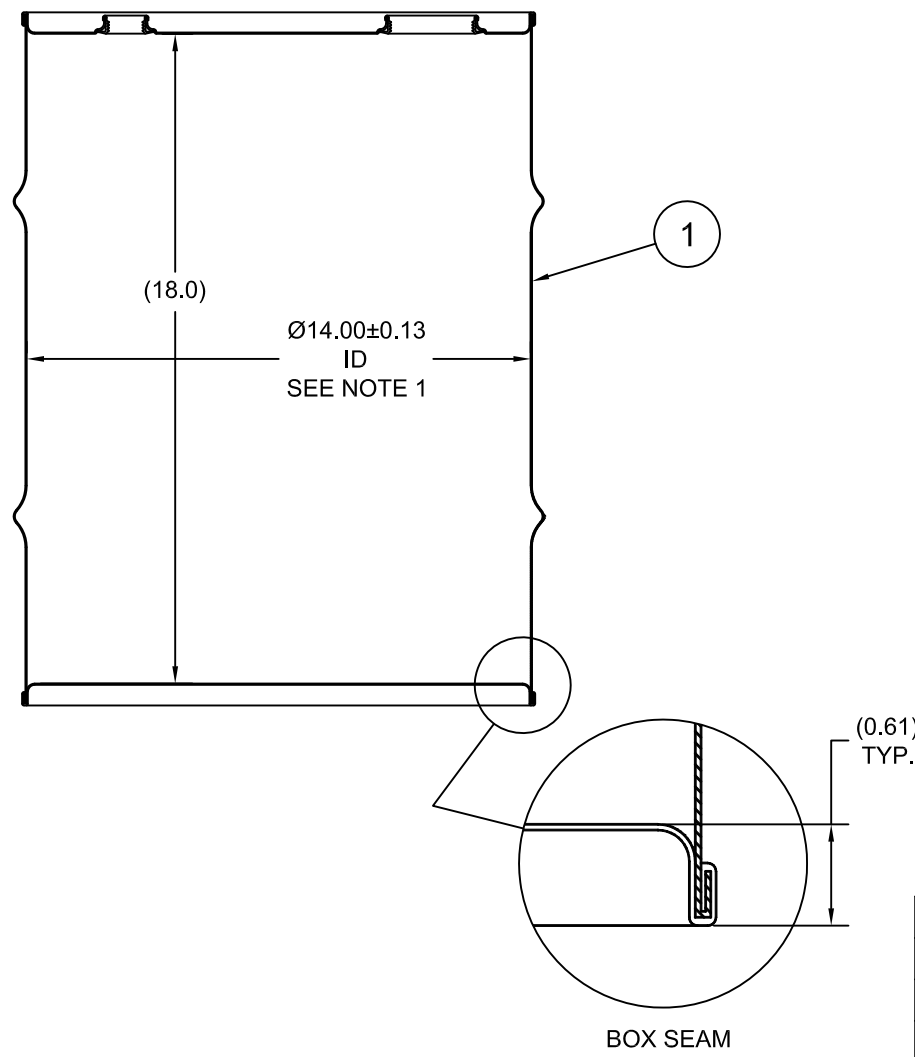


0011LS

ECN # or INIT	REV	DESCRIPTION	DATE
OE-005	A1	REDRAWN IN AutoCAD	06-JUL-2009
OE-001	A2	CLERICAL ERROR	21-SEP-2010
OE-001	A3	CLERICAL ERROR	19-SEP-2011
OE-001	A4	CLERICAL ERROR	16-APR-2013
OE-013	A5	REVISED HOOP PROFILE	22-APR-2013



SECTION A-A
SHOWN W/ PLUGS REMOVED



NOTES:

1. TO DETERMINE GREATER ACCURACY OF ANY DIAMETRIC DIMENSION, MEASURING OF CIRCUMFERENCE IS REQUIRED
2. CONSTRUCTION per 49 CFR §178.504 (b)

MATERIAL:

1. 304SS PER ASTM A240 OR EQUIVALENT
2. MATERIAL THICKNESS: DRUM 0.9mm (0.0319 - 0.0370, 20 GAUGE)

FINISH:

1. PASSIVATED INNER AND OUTER SURFACE OF BODY WELD SEAM

UN NUMBER EMBOSSED ON BOTTOM OF DRUM
1/2" CHARACTERS READING:
UN/1A1/X1.4/250/YR

0.9 * 304

(YR = YEAR OF MANUFACTURE)

ITEM	P/N	DESCRIPTION	QTY
6		UN DURABLE LABEL	1
5	PT3050	PLUG 3/4 TS 316SS BUNA GASKET	1
4	FT3050	FLANGE 3/4 TS 316SS BUNA GASKET	1
3	PT2050	PLUG 2 TS 316SS BUNA GASKET	1
2	FT2050	FLANGE 2 TS 316SS BUNA GASKET	1
1		10 GALLON TIGHT HEAD DRUM	1

THE USE OF INFORMATION CONTAINED HEREIN IS RESTRICTED FOR THE BENEFIT OF SKOLNIK INDUSTRIES ONLY. UNAUTHORIZED USE OR DISCLOSURE, COPYING OR OTHERWISE REPRODUCING (IN ANY MANNER) ANY PORTION OF THIS DRAWING WITHOUT PRIOR WRITTEN PERMISSION OF AN AUTHORIZED OFFICIAL OF SKOLNIK INDUSTRIES IS STRICTLY PROHIBITED.

TARE WEIGHT:
14 lbs

MFG JR	DRW LJT	CHK MAR
SLS DR	QA MD	
APR G. Petersen		
FILE CREATED IN AutoCAD 2002	3 RD	

UNLESS STATED OTHERWISE
(DIMENSIONS IN PARENTHESIS ARE FOR REFERENCE ONLY!!!)
ALL DIMENSIONS ARE IN INCHES
DO NOT SCALE DRAWING
TOLERANCES:
FRACTIONS ±1/4
X° ± 3°
X.X ± 0.2
X.XX ± 0.10
X.XXX ± 0.030

SKOLNIK INDUSTRIES, INC.
4900 SOUTH KILBOURN AVENUE, CHICAGO, IL 60632

DESCRIPTION
10 GALLON TIGHT HEAD DRUM
0.9 - 0.9 - 0.9 304SS
1A1/X1.4/250

REL. DATE 06-JUL-2009	PART NUM. / FILENAME ST1003	REV A5
--------------------------	--------------------------------	-----------