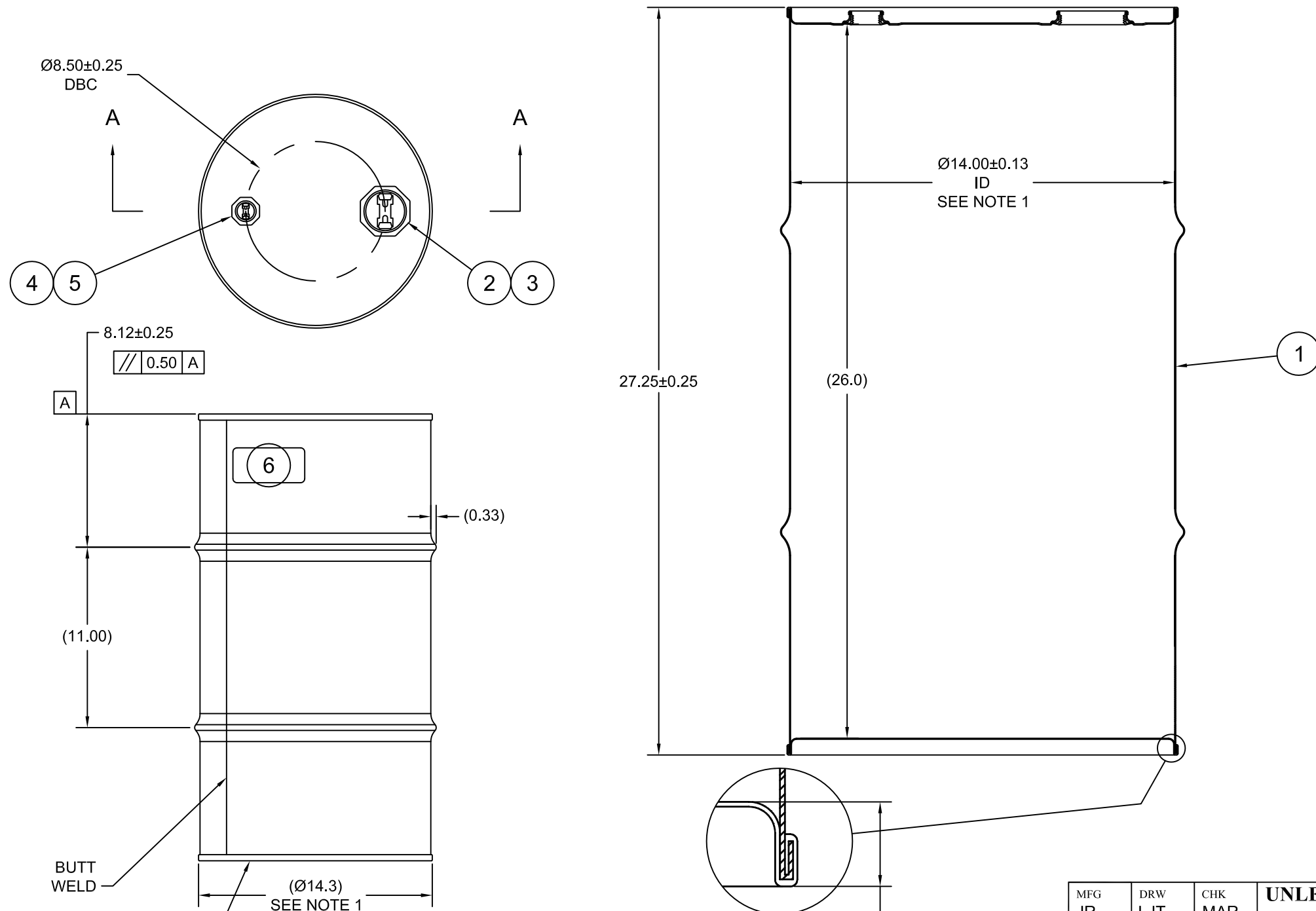


ST1603

ECN # or INIT	REV	DESCRIPTION	DATE
OE-005	A1	REDRAWN TO AutoCAD	04-DEC-2009
OE-001	A2	CLERICAL ERROR	16-APR-2013
OE-013	A3	REVISED HOOP PROFILE	22-APR-2013

SECTION A-A  
(SHOWN W/ PLUGS REMOVED)



**NOTES:**

1. TO DETERMINE GREATER ACCURACY OF ANY DIAMETRIC DIMENSION, MEASURING OF CIRCUMFERENCE IS REQUIRED
2. CONSTRUCTION per 49 CFR § 178.504 (b)

**MATERIAL:**

1. 304SS PER ASTM A240 OR EQUIVALENT
2. MATERIAL THICKNESS: 0.9mm (0.0319 - 0.0370;20 GAUGE)

**FINISH:**

1. PASSIVATED INNER AND OUTER SURFACE OF BODY WELD SEAM

ITEM	P/N	DESCRIPTION	QTY
6		UN DURABLE LABEL	1
5	PT3050	PLUG 3/4 TS 316SS BUNA GASKET	1
4	FT3050	FLANGE 3/4 TS 316SS BUNA GASKET	1
3	PT2050	PLUG 2 TS 316SS BUNA GASKET	1
2	FT2050	FLANGE 2 TS 316SS BUNA GASKET	1
1		BODY/BOTTOM 16 GALLON DRUM 14.0 ID	1

UN NUMBER EMBOSSED ON BOTTOM OF DRUM  
1/2" CHARACTERS READING:  
UN/1A1/X1.2/250/YR

0.9 \* 304

(YR = YEAR OF MANUFACTURE)

TARE WEIGHT:  
17 lbs

THE USE OF INFORMATION CONTAINED HEREIN IS RESTRICTED FOR THE BENEFIT OF SKOLNIK INDUSTRIES ONLY. UNAUTHORIZED USE OR DISCLOSURE, COPYING OR OTHERWISE REPRODUCING (IN ANY MANNER) ANY PORTION OF THIS DRAWING WITHOUT PRIOR WRITTEN PERMISSION OF AN AUTHORIZED OFFICIAL OF SKOLNIK INDUSTRIES IS STRICTLY PROHIBITED.

MFG JR	DRW LJT	CHK MAR
SLS DR	QA MD	
MG Bora Rasic		
FILE CREATED IN AutoCAD 2002		

**UNLESS STATED OTHERWISE**

(DIMENSIONS IN PARENTHESIS ARE FOR REFERENCE ONLY!!!)

ALL DIMENSIONS ARE IN INCHES  
DO NOT SCALE DRAWING

TOLERANCES:  
FRACTIONS ±1/4  
X° ± 3°  
X.X ± 0.2  
X.XX ± 0.10  
X.XXX ± 0.030

**SKOLNIK INDUSTRIES, INC.**  
4900 SOUTH KILBOURN AVENUE, CHICAGO, IL 60632

DESCRIPTION  
16 GALLON TIGHT HEAD DRUM  
0.9 - 0.9 - 0.9 304SS STEEL  
1A1/X1.2/250

REL. DATE 04-DEC-2009	PART NUM. / FILENAME ST1603	REV A3
--------------------------	--------------------------------	-----------