

ST1604

ECN # or INIT	REV	DESCRIPTION	DATE
	A	RELEASE	11-JUN-2012
OE-001	A1	CORRECTED VIEWS	14-JUN-2012
OE-001	A2	CLERICAL ERROR	16-APR-2013
OE-001	A3	CLERICAL ERROR	18-APR-2013
OE-013	A4	REVISED HOOP PROFILE	22-APR-2013
OE-001	A5	CLERICAL ERROR	23-APR-2013

NOTES:

1. THIS DIMENSION REPRESENTS DRUM AFTER BEING PROPERLY ASSEMBLED AND CLOSED PER SKOLNIK CLOSING INSTRUCTIONS.
2. TO DETERMINE GREATER ACCURACY OF ANY DIAMETRIC DIMENSION, MEASURING OF CIRCUMFERENCE IS REQUIRED
3. CONSTRUCTION per 49 CFR § 178.504 (b)

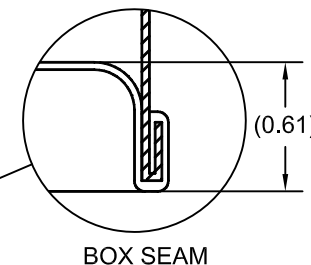
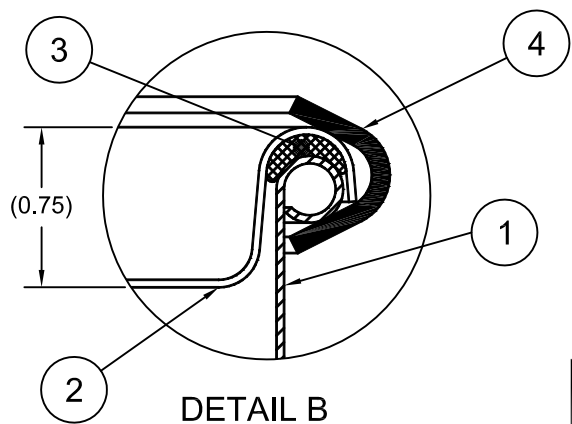
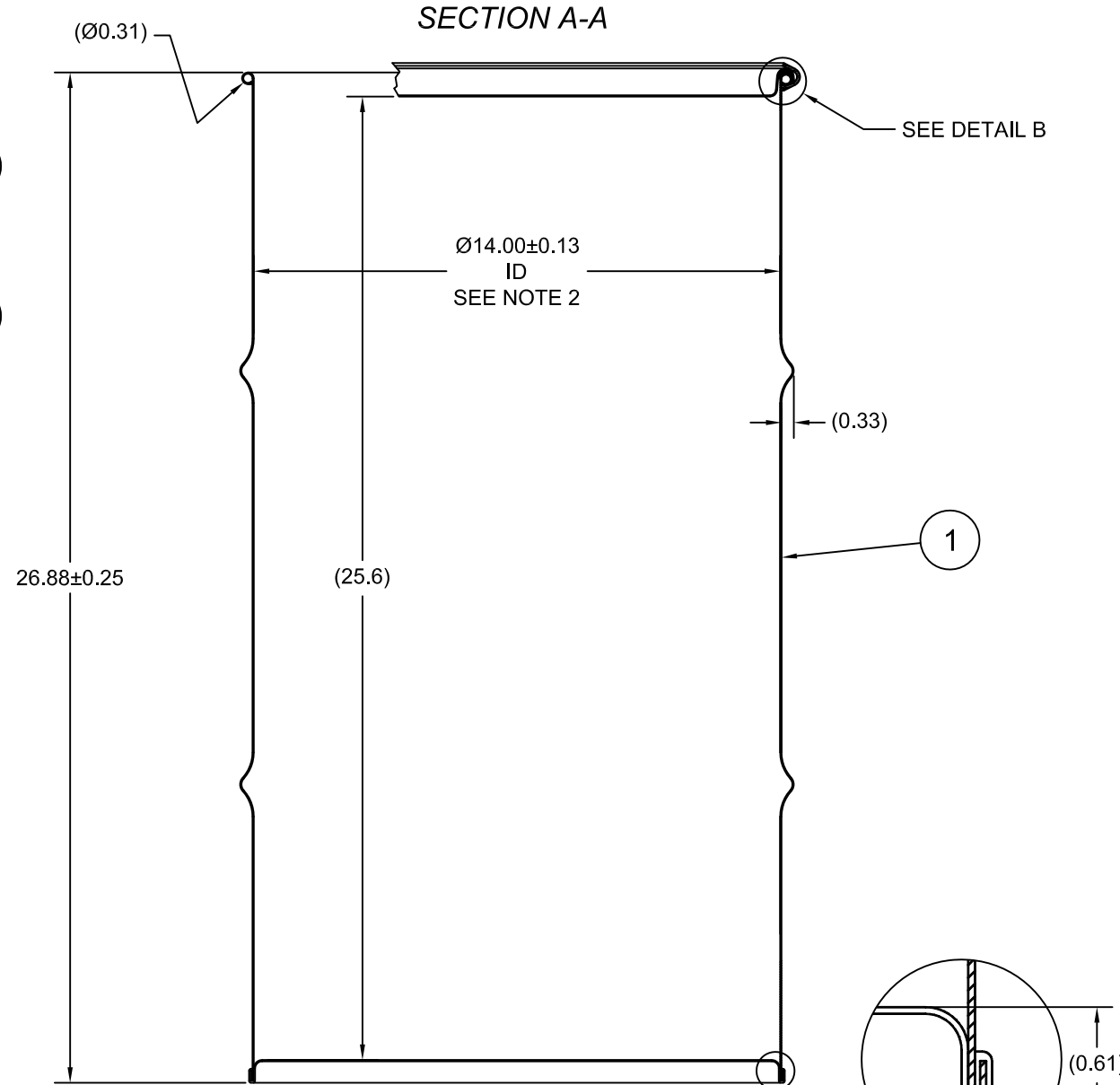
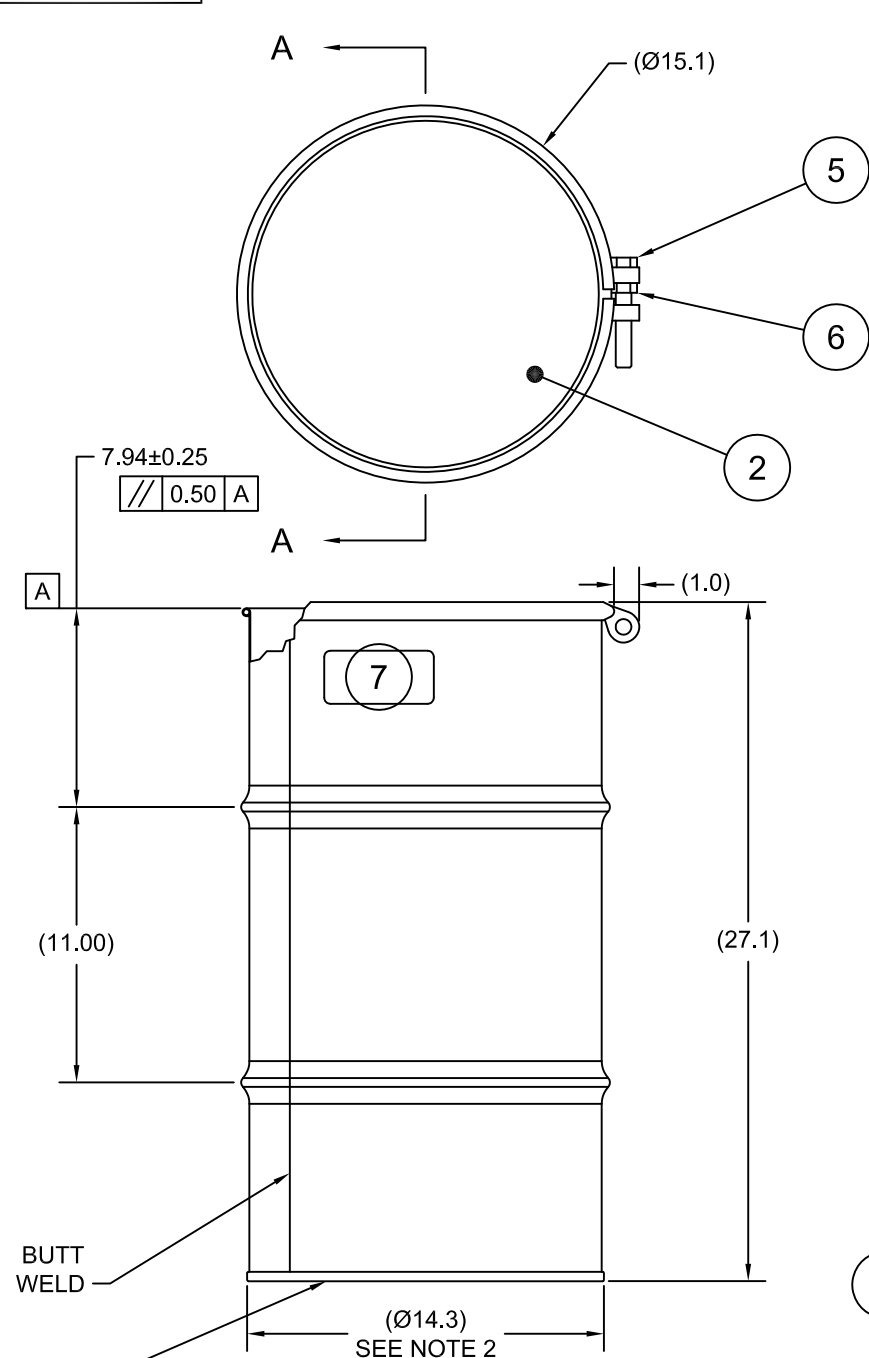
MATERIAL:

1. 304SS PER ASTM A240 OR EQUIVALENT
2. MATERIAL THICKNESS: 0.9mm (0.0319 - 0.0370; 20 GAUGE)
3. BOLT RING CARBON STEEL

FINISH:

1. PASSIVATED INNER AND OUTER SURFACE OF BODY WELD

7		UN DURABLE LABEL	1
6	NT5800	5/8-11 UNC HEX JAM NUT	1
5	BT5840	5/8-11UNC X 4in LONG HEX HEAD BOLT	1
4	RBH1413	3 - 16 GAL BOLT RING (HP) 13 GA 5/8 LUG	1
3	GE0503-01	GASKET, EPDM, Ø3/8	1
2	P1409S	COVER, Ø14.00 ID DRUM, 304 SS	1
1		BODY/BOTTOM 16 GALLON DRUM 14.0 ID	1
ITEM	P/N	DESCRIPTION	QTY



UN NUMBER EMBOSSED ON BOTTOM OF DRUM
 1/2" CHARACTERS READING:
 UN/1A2/X200/S/YR
 UN/1A2/Y1.5/150/YR
 0.9 * 304
 (YR = YEAR OF MANUFACTURE)

TARE WEIGHT:
 17 LBS

THE USE OF INFORMATION CONTAINED HEREIN IS RESTRICTED FOR THE BENEFIT OF SKOLNIK INDUSTRIES ONLY. UNAUTHORIZED USE OR DISCLOSURE, COPYING OR OTHERWISE REPRODUCING (IN ANY MANNER) ANY PORTION OF THIS DRAWING WITHOUT PRIOR WRITTEN PERMISSION OF AN AUTHORIZED OFFICIAL OF SKOLNIK INDUSTRIES IS STRICTLY PROHIBITED.

MFG	DRW	CHK	UNLESS STATED OTHERWISE (DIMENSIONS IN PARENTHESIS ARE FOR REFERENCE ONLY!!!) ALL DIMENSIONS ARE IN INCHES DO NOT SCALE DRAWING TOLERANCES: FRACTIONS ±1/4
-	BL	-	
SLS	-	QA	
MG	-	-	X° ± 3° X.X ± 0.2 X.XX ± 0.10 X.XXX ± 0.030
FILE CREATED IN	3 RD		
AutoCAD 2002			

SKOLNIK INDUSTRIES, INC.
 4900 SOUTH KILBOURN AVENUE, CHICAGO, IL 60632

DESCRIPTION
 16 GALLON OPEN HEAD DRUM
 0.9 - 0.9 - 0.9 304SS
 1A2/X200/S & 1A2/Y1.5/150

REL. DATE	PART NUM. / FILENAME	REV
11-JUN-2012	ST1604	A5