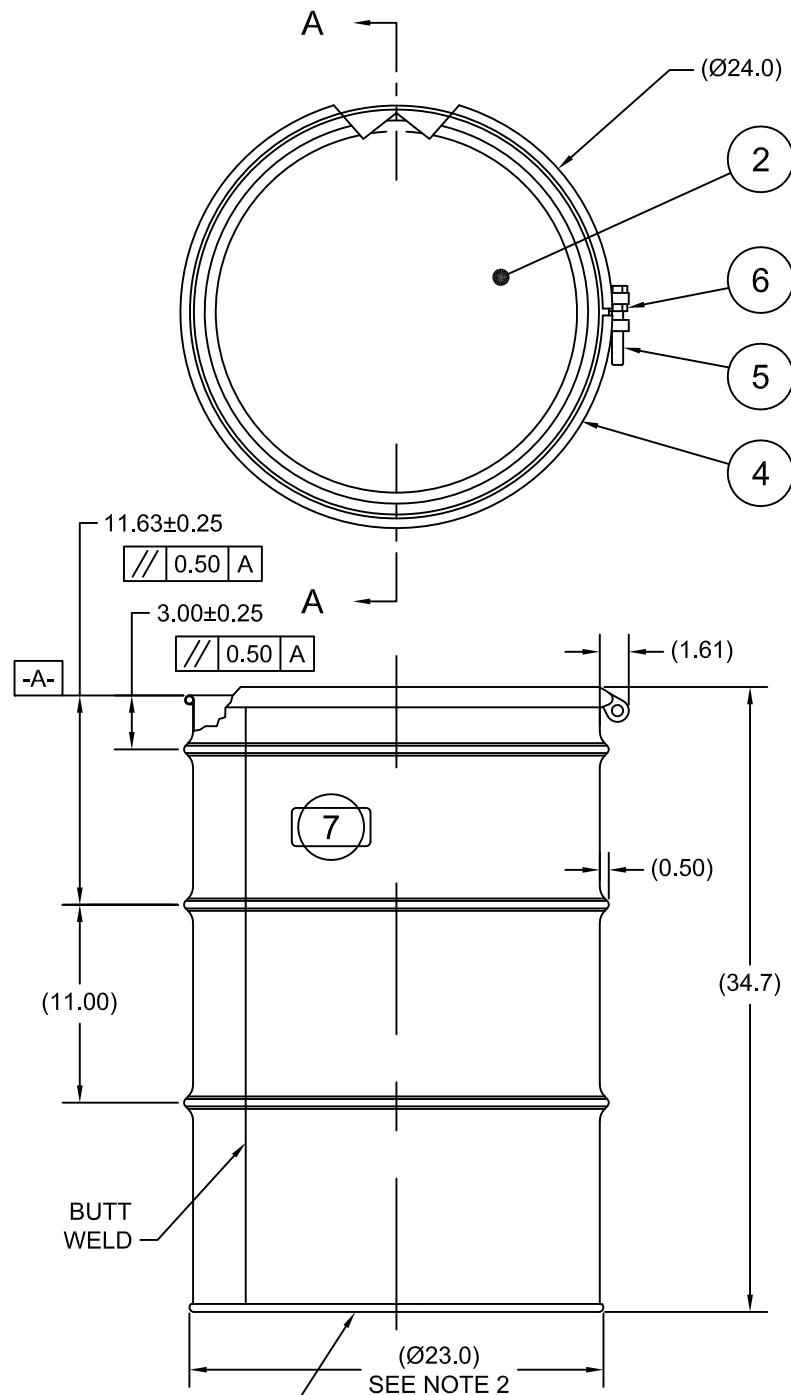


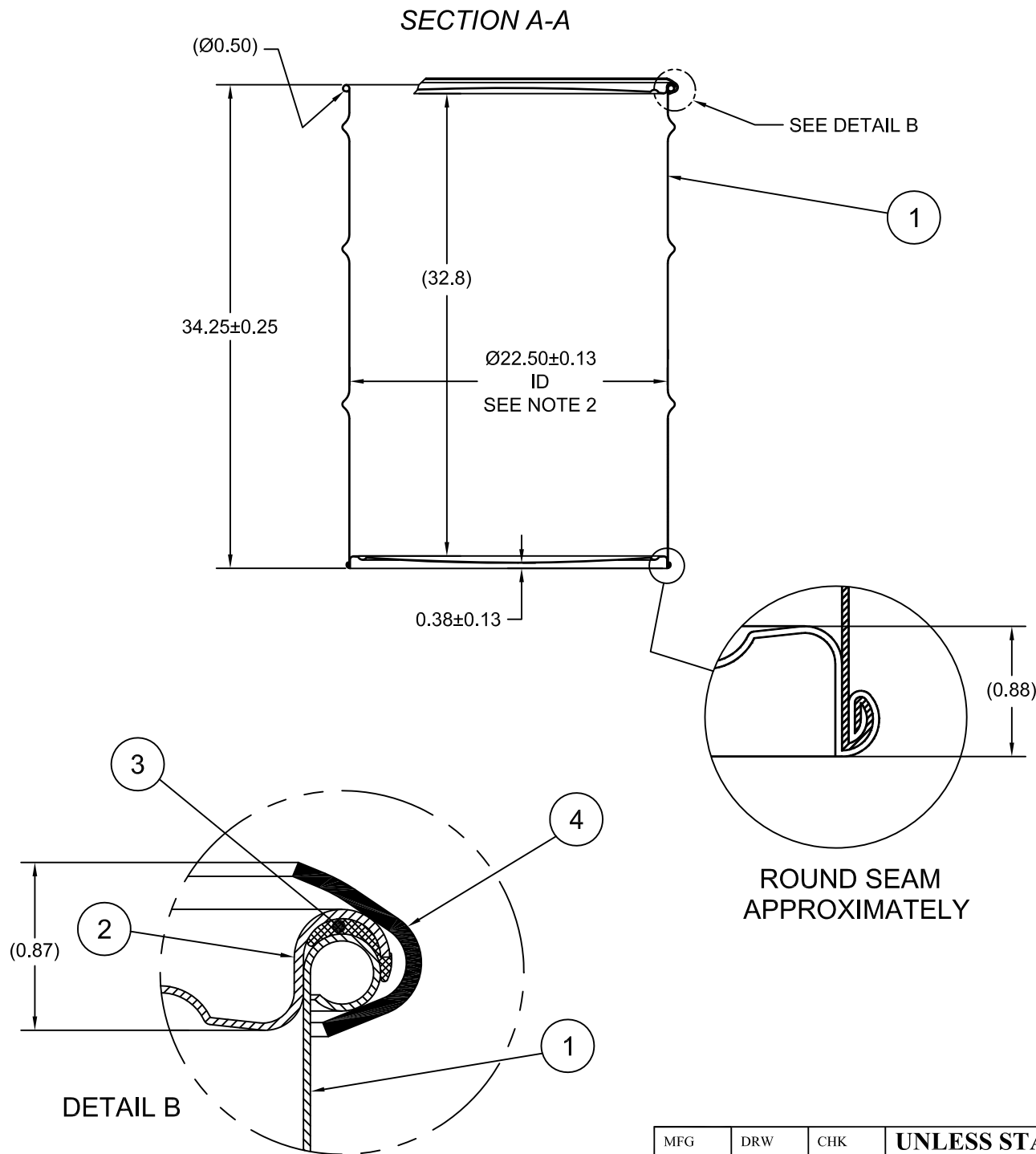
1099LS

ECN # or INIT	REV	DESCRIPTION	DATE
	A	RELEASED	06-NOV-2006
MAR	A1	CHG'D MAT'L NOTE 4 (CLERICAL ERROR)	07-MAY-2008
LJT	A2	CLERICAL ERROR	17-DEC-2010
LJT	A3	CLERICAL ERROR	18-APR-2013



UN NUMBER EMBOSSED ON BOTTOM OF DRUM
 1/2" CHARACTERS READING:
 UN/1A2/X430/S/YR
 UN/1A2/Y1.5/200/YR
 1.5 * 304
 (YR = YEAR OF MANUFACTURE)

BEST PRINTED ON B-SIZE PAPER



TARE WEIGHT:
60 lbs

NOTES:

1. THIS DIMENSION REPRESENTS DRUM AFTER BEING PROPERLY ASSEMBLED AND CLOSED PER SKOLNIK CLOSING INSTRUCTIONS
2. TO DETERMINE GREATER ACCURACY OF ANY DIAMETRIC DIMENSION, MEASURING OF CIRCUMFERENCE IS REQUIRED
3. CONSTRUCTION per 49 CFR §178.504 (b)

MATERIAL:

1. 304SS PER ASTM A240 OR EQUIVALENT
2. MATERIAL THICKNESS: 1.5mm (0.0543 - 0.0590; 16 GAUGE)
3. GASKET MAT'L PER ASTM D1056
4. BOLT RING CARBON STEEL

FINISH:

1. PASSIVATED INNER AND OUTER SURFACE OF BODY WELD SEAM

ITEM	P/N	DESCRIPTION	QTY
7		UN DURABLE LABEL	1
6	NT5800	5/8-11UNC HEX JAM NUT	1
5	BT5840	5/8-11UNC X 4in LONG HEX HED BOLT	1
4	RBH2212	BOLT RING (HP) 55G 12GA 5/8 LUG	1
3	GE5500	GASKET IN-COVER D EPDM	1
2	P2215S	COVER 22.5 ID	1
1		BODY/BOTTOM 55 GALLON DRUM 22.5 ID	1

THE USE OF INFORMATION CONTAINED HEREIN IS RESTRICTED FOR THE BENEFIT OF SKOLNIK INDUSTRIES ONLY. UNAUTHORIZED USE OR DISCLOSURE, COPYING OR OTHERWISE REPRODUCING (IN ANY MANNER) ANY PORTION OF THIS DRAWING WITHOUT PRIOR WRITTEN PERMISSION OF AN AUTHORIZED OFFICIAL OF SKOLNIK INDUSTRIES IS STRICTLY PROHIBITED.

MFG	DRW	CHK	UNLESS STATED OTHERWISE (DIMENSIONS IN PARENTHESIS ARE FOR REFERENCE ONLY!!!) ALL DIMENSIONS ARE IN INCHES DO NOT SCALE DRAWING TOLERANCES: FRACTIONS ±1/4
LJT	LJT	X° ± 3°	
SLS	QA	X.X ± 0.2	
DR	GF		X.XX ± 0.10
APR			X.XXX ± 0.030
MS			
FILE CREATED IN	3 RD		
AutoCAD 2002			

SKOLNIK INDUSTRIES, INC.
 4900 SOUTH KILBOURN AVENUE, CHICAGO, IL 60632

DESCRIPTION
 55 GALLON OPEN HEAD DRUM
 1.5 - 1.5 - 1.5 304SS
 1A2/X430/S & 1A2/Y1.5/200

REL. DATE	PART NUM. / FILENAME	REV
06-NOV-2006	ST5501	A3